



FOR SALE

LARGE 114M2 RENOVATED APARTMENT WITH AMAZING VIEWS - THE BEST OF BURLEIGH'S BEACHFRONT

Live the life in Burleigh that only most can dream of and take advantage of this ripe opportunity in arguably one of Burleigh best beachfront residences and prestigious address... The Southern Cross beachfront apartment building!

This stunning 4th floor apartment features a kitchen flowing effortlessly with ceaser stone bench tops polished with 2Pac finishes and stainless steel appliances allowing you to be the entertainer of entertainers whilst watching the surf roll in enjoying wonderful coastal ambiances.

This modern and contemporary apartment is one of the more popular apartments in the building as this 'B' style Southern Cross apartment can be both your income achiever and personal holiday apartment rolled into one with high returns on offer though very well ran onsite management .

A great holiday letting performer, Let this apartment generate an income whilst your not enjoying Burleigh beachfront living yourself...This is an ideal Nest & Invest opportunity.

Selling completely renovated to a very high standard and fully furnished with high quality furniture this apartment offers an opportunity that rarely becomes available as larger apartments are being more and more tightly held as new apartments just aren't built like this anymore.

Multiple lock up storage options are available internally and there is a storage cage in the basement for personal items to be stored externally from the apartment.

- Pool with seating areas
- Outdoor entertaining
- Sauna / Spa / Gymnasium
- Secure underground parking space close to lift / Storage locker
- Impeccable maintained grounds / Well run onsite management

The 'Southern Cross' is an impeccably maintained family orientated Beachfront resort building that resides on over 3000m2 of prime Burleigh Beachfront real estate.

2 BED | 2 BATH | 1 CAR

PRICE:

Expressions Of Interest

OPEN FOR INSPECTION:

N/A

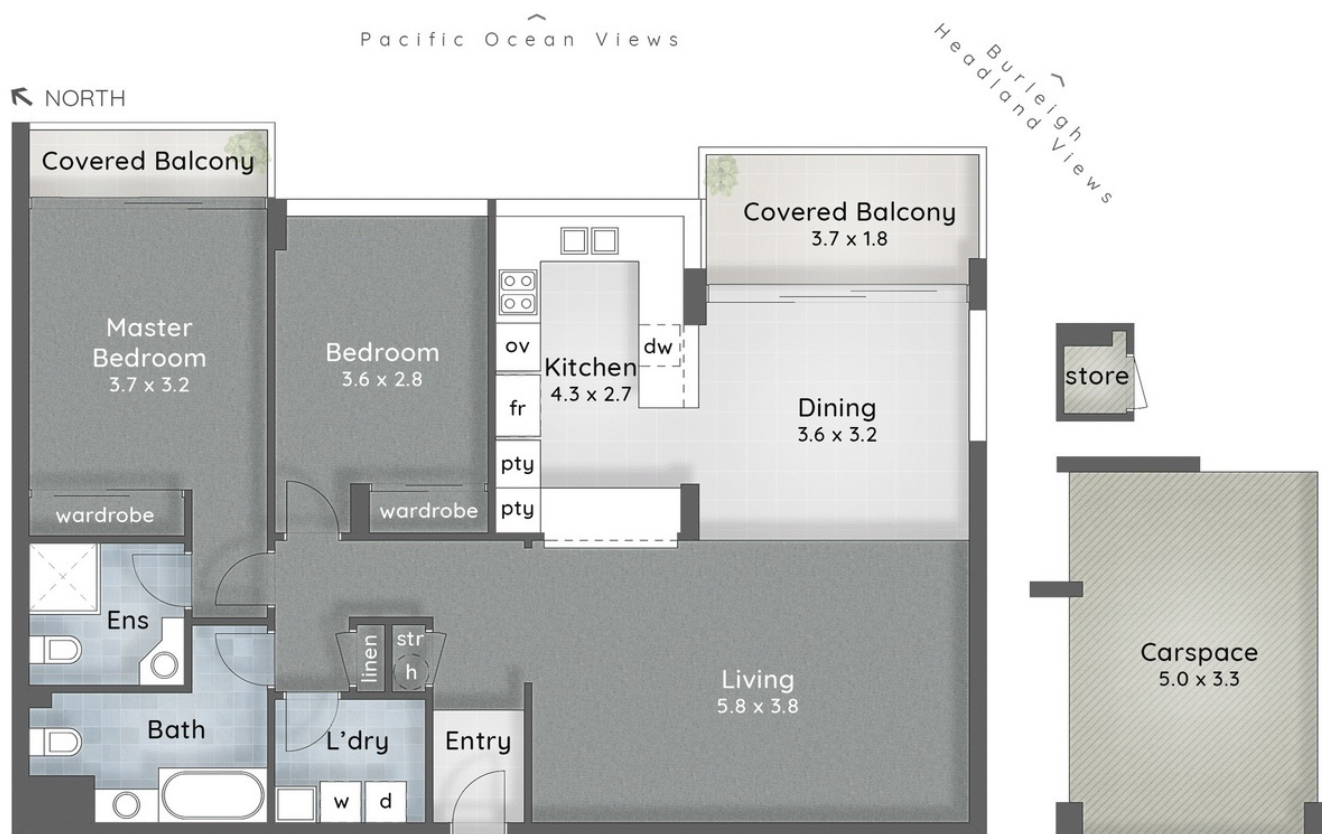


Trent Mark

0404980878

trent@atrealty.com.au

www.atrealty.com.au



Disclaimer: Please note this floor plan is for marketing purposes and is to be used as a guide only. All dimensions are estimates only and may not be exact measurements.