



FOR LEASE

MASSIVE MODERN QUEENSLANDER - 1 NEIGHBOUR - IN PETRIE

Are you looking for a Large Lovely Modern Queenslander located in a quiet oasis?

This modern home is being offered for rent for the first time. If you want to live in a quiet part of Petrie on Pines, with only one neighbour, then this is your new home.

As you walk up the wide front stairs, you are greeted by a wide wraparound verandah with views to the north pine river.

Walking in the front door, you are greeted by a large home office and 4th Bedroom. Down the Hallway brings you to a massive Living - Dining room and modern Kitchen, all filled with tons of natural light—polished floorboards throughout this area. The Kitchen and living space is surrounded by a wraparound verandah with views over the inground pool and North Pine River.

The three other large bedrooms are off the Hallway. The design of this house means that there is plenty of storage, and the large bedrooms are quiet and light-filled. Separate toilet and washbasin are located off this Hallway.

Take the stairs downstairs to a large rumpus room with outside access, a separate bathroom and large storage area. The massive double garage is located next to this. More storage space can be found under the main house.

The large outdoor yard is complemented by a large inground pool, surrounded by a large deck area. A Firepit area is located in a quiet area of the yard.

Surrounded by nature and located so close to everything.

Call 0415 733 349 today to inspect.
Available from 27th of April

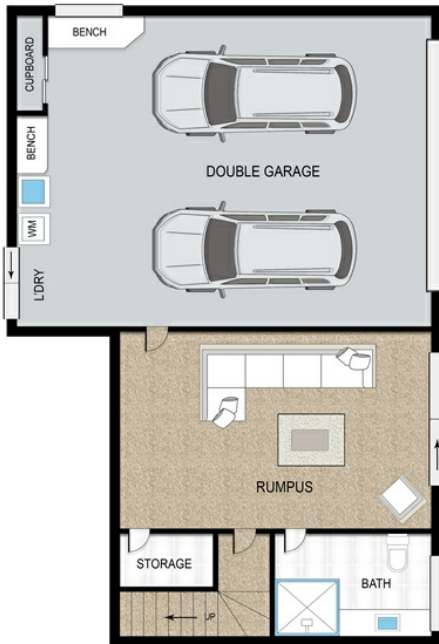
5 BED | 3 BATH | 2 CAR

PRICE:
\$680 per week

OPEN FOR INSPECTION:
N/A



Ian Partridge
0415733349
ianpartridge@atrealty.com.au
www.atrealty.com.au



GROUND FLOOR



UPPER FLOOR

Disclaimer: Please note this floor plan is for marketing purposes and is to be used as a guide only. All dimensions are estimates only and may not be exact measurements.