

SOLD

MODERN, STYLISH & CHIC! & WITH SIDE ACCESS!

Now, this house appears at first glance to be your standard 4/2/2 in some respects, so you know what you are getting.

However, it has some additional elements that you would not expect. The first and most significant for me, is the dining area. This is usually quite small with room for a 6 seater. The dining room is huge. As you can see, it fits a ten-seater quite comfortably.

It also has been painted beautifully with feature walls and gentle elements in the bedroom. The colours go well with the design and really lift the home.

Lastly is the yard and the access. 600m2 With large access, so you can store anything in the backyard (including caravans) it makes it very convenient!

600m2 Block Located in a Modern neighbourhood and in an elevated position to capture the breezes.

At a Glance:

- * 600m2 with Side Access now that is getting hard to find
- * Modern Comfortable 4 Bedroom Home with Ensuite & Walk in Robe to Master
- * Open Plan living & Dining area
- * Modern Galley style kitchen with dishwasher
- * Outdoor entertainment area
- * Fully fenced

Well presented home with nothing to spend, just move in and enjoy!

Close to all major amenities and conveniences and easy access to the M1.

Contact Gail Bernardin on 0418 645 506 to organise your inspection.

4 BED | 2 BATH | 2 CAR

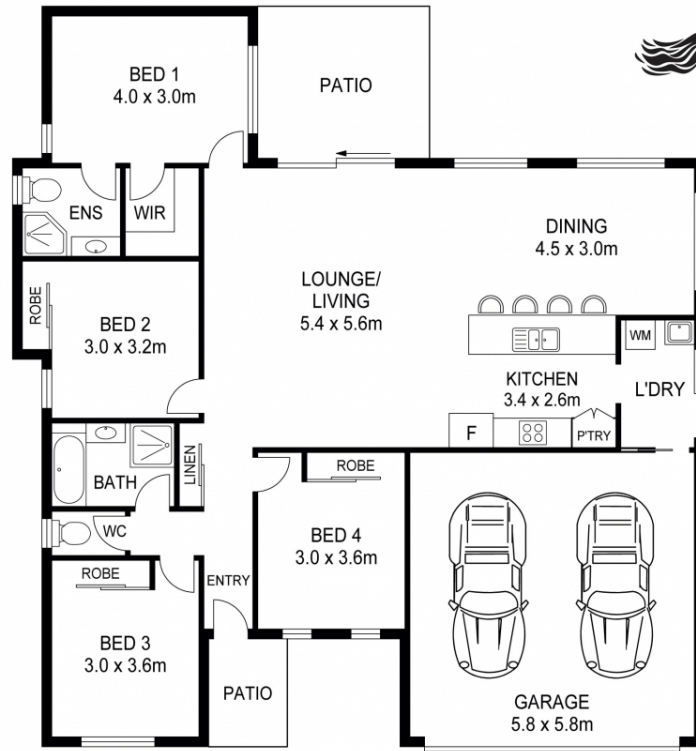
PRICE:
\$405,000

OPEN FOR INSPECTION:
N/A



Gail Bernardin
0418645506

gail@creedonpropertygroup.com
www.gailbernardin.com.au



0m 1m 2m 3m 4m 5m **SCALE (METRES)**

PLANS SHOWN ONLY INDICATIVE OF LAYOUT. DIMENSIONS ARE APPROXIMATE.

Disclaimer: Please note this floor plan is for marketing purposes and is to be used as a guide only. All dimensions are estimates only and may not be exact measurements.