



## FOR SALE

### SAFE SUSTAINABLE AND PEACEFUL FAMILY BUSH RETREAT.

OWNER IS MOTIVATED TO SELL AND WILL CONSIDER ALL OFFERS>.

Live video inspections are available for interstate buyers or one to one on the spot inspections.

Offered for sale is a very private sustainable lifestyle property with a large comfortable 4 bed family home surrounded by an easy care garden nestled in native bushland. From the spacious back deck you can enjoy the view of the scattered array of native grass trees and lovely tall shady gum trees full of wild bird life. The large terraced house yard of approx 2 acres has many fruit trees. The garden is well fenced with mesh to keep the children and pet dogs safe. Solar panels and 3.5 KW inverter. Small established vege. garden and fruit trees; lemon, apricot, peach, passionfruit vine, mandarin tree, mulberry tree and two apple trees. Frost free area.

Bitumen road frontage and long sealed driveway, property is situated only 3 mins drive to the center of the Crows Nest township.

#### FEATURES OF THIS SUSTAINABLE HOME ARE;

Long ramp for easy access to the back deck. Disability friendly.

Kitchen features quality new electric stove and a large walk in pantry.

Large open plan dining and living with high cathedral ceilings area has reverse cycle split system and wood heater.

4 bedrooms, 3 with built in robes, one with reverse cycle split system.

Two way bathroom with a large spa bath, combined shower plus toilet.

Large rumpus room and wood heater plus reverse cycle split system.

Steel double garage approx. 12 x 8 metres with roller doors, laundry and extra toilet, plus powered workshop.

Large cement brick shed, approx. 12 x 10 metres; cement floor, roller door. Ideal for a home business or serious hobbyist, it features a high 18 foot ceiling, lots of power points and excellent lighting.

The whole 5 acre property is fully fenced.

A large 22,000 litre plus 2 x 4,500 litre rain water tanks are connected to home and garden.

Sealed all weather driveway.

Fenced into two areas. 2 acres fenced around the sheds, garden and home.

4 BED | 1 BATH | 3 CAR

#### PRICE:

Offers over \$365,000

#### OPEN FOR INSPECTION:

N/A

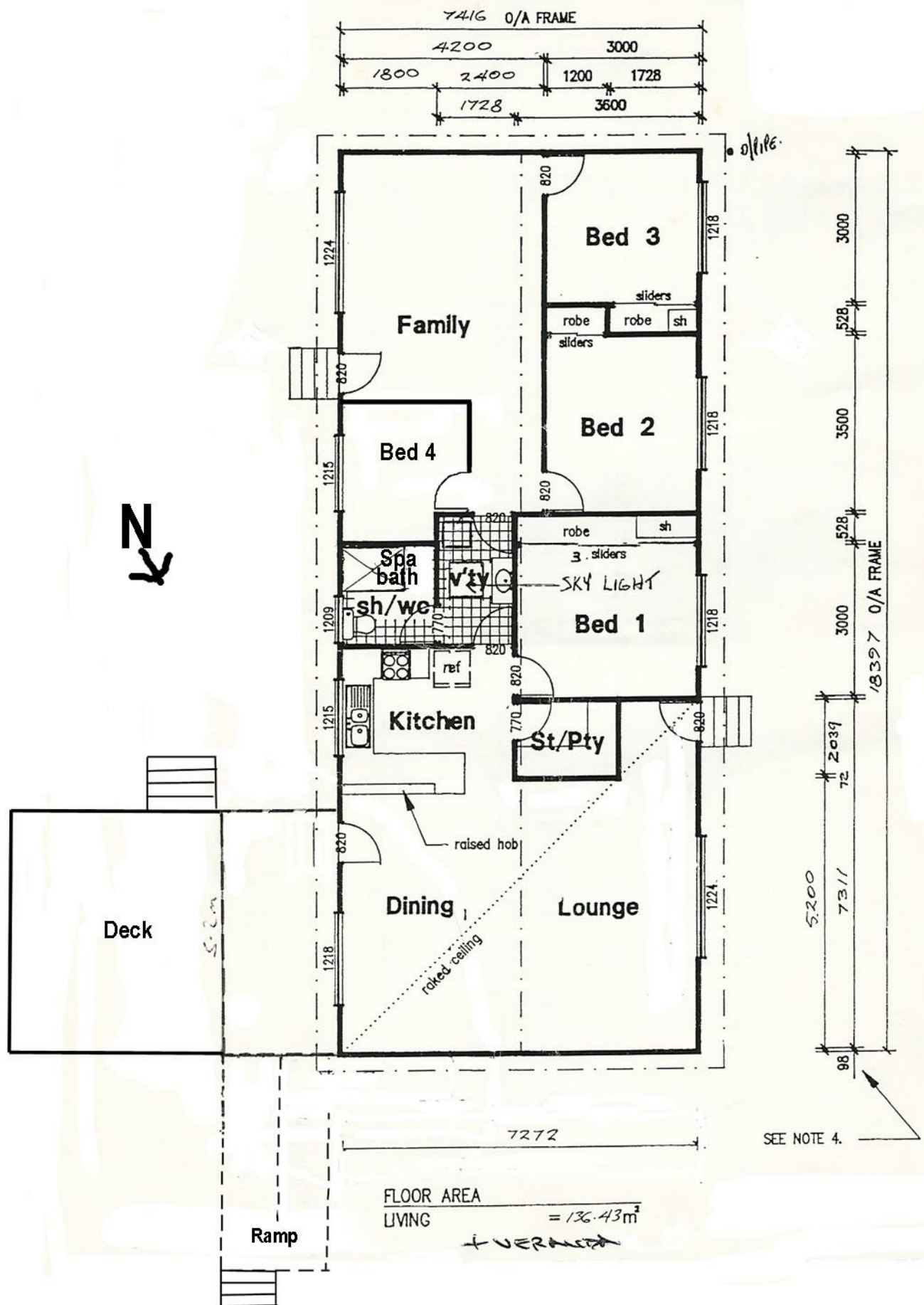


**Yvonne Bradley**

**0408181146**

yvonne@atrealty.com.au

[www.atrealty.com.au](http://www.atrealty.com.au)



Disclaimer: Please note this floor plan is for marketing purposes and is to be used as a guide only. All dimensions are estimates only and may not be exact measurements.