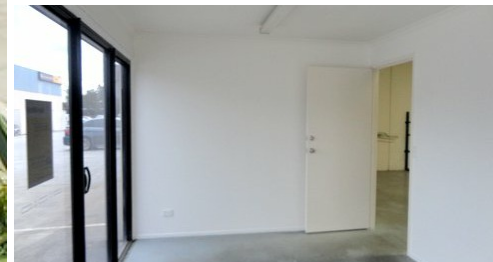
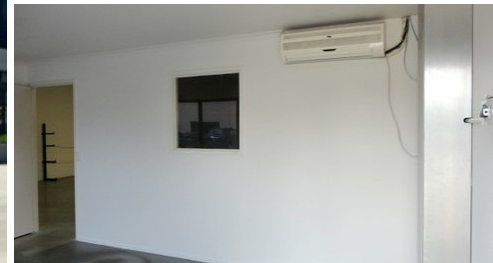


12/10 BURNSIDE ROAD ORMEAU



FOR SALE

JUST LISTED - FOR SALE OR LEASE

1. INDUSTRIAL UNIT

- * 303m2 of Industrial Unit
- * 30m2 of Reception & Lunch Room
- * Upgraded Three Phase Power
- * Container Height Electric Roller Door
- * Exposure to the M1 in a Landmark Building
- * Rectangle shaped Unit
- * Ample Parking

2. OFFICE IN TOWER (separate to Industrial Unit)

- * 57m2 of Office
- * Large windows for natural light
- * 2nd level
- * Elevator to offices
- * Communal amenities on both levels of the tower
- * Exposure to the M1
- * East facing Office

These properties can be leased separately if required.

Secure your position today.

0 BED | 0 BATH | 0 CAR

PRICE:

\$625,000

OPEN FOR INSPECTION:

N/A



Debbie Phillips

0422471567

debbiep@atrealty.com.au

www.atrealty.com.au