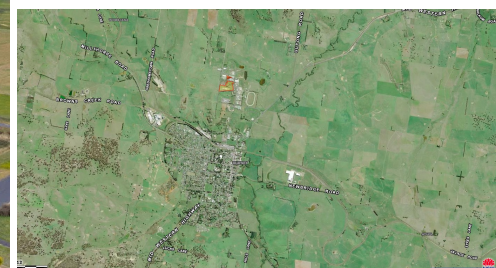


134 MARSHALLS LANE, BLAYNEY, NSW, 2799



SOLD

INDUSTRIAL SITE-16 ACRES, 5 LOTS, 3 ROAD FRONTAGES, SHEDS, WORKSHOP, HARD STAND AREA, FULLY FENCED, NEAR BLAYNEY RAILWAY & CBD,

Move on in with your business choice, Major 16 Acre Industrial site zoned IND-1, Multiple potential uses, a short distance from Blayney CBD & Rail, only 25 minutes from Bathurst or Orange CBD. Office on site. Lots of Hard Stand Area, Sheds and undercover floor space, ideal for any industrial purpose. price to Sell, owners motivated. High elevated position overlooking industrial area and distant Agricultural land. Close to Mid Western Highway. A great piece of land **MUST BE SOLD!!**

Call Elias Sleiman on 0438184127 Now!!

0 BED | 0 BATH | 0 CAR

PRICE:
\$300,000

OPEN FOR INSPECTION:
N/A



Elias Sleiman
0438184127
elias@atrealty.com.au
www.ruralnational.com.au