



SOLD

STYLISH QUALITY LIVING

***HOME OPEN THIS SATURDAY 9th MAY 1PM TO 145 PM ***

VIEWING WILL NOT DISAPPOINT THE FUSSIEST OF BUYERS
PLEASE CALL NANCY BIRD ON 041 555 8594 TO REGISTER YOUR INTEREST OR BOOK
YOUR PRIVATE VIEWING ANYTIME
7 DAYS WEEK 10AM to 7PM

STYLISH QUALITY LIVING

Nancy Bird is proud to present this stylish beautifully presented quality built and finished by Shelford Homes, this spacious 3 bedroom 2 bathroom home with 2 spacious separate courtyards and extra large car double lock up garage.with storage area.This stunning residence is perfectly located close to pretty park, easy freeway access and a short walk or minutes drive to shops and the award winning No 1 Primary School Aubin Grove Primary.This is a must see and will impress the fussiest of buyers!

BE IMPRESSED as soon as you enter this modern gorgeous down sizer, first home or investment property, with 2 spacious separate living areas, 3 bedrooms with a KING sized master with en-suite bathroom HUGE walk in robe with sliding doors opening on to your own beautiful courtyard and a SECOND courtyard from the SPACIOUS open plan living area.

Your HUGE Open plan Living area is separated by a French door to the front lounge room and includes SPACIOUS gourmet kitchen with wide stone bench top and breakfast bar, plenty of cupboard space, double fridge recess, quality stainless steel appliances includes gas stove top with range hood, electric oven, dishwasher and microwave recess and double sink with drainers.

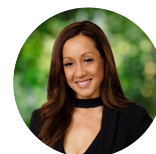
The Kitchen overlooks the spacious dining area with sliding doors to another large courtyard.

Quality Porcelain modern 600 mm x 600 mm tiling throughout the Open Plan Living area and hallways and neutral fresh new paint and quality decor throughout.
This property will not last call today take this fantastic opportunity and book your appointment as Viewing is guaranteed to impress the fussiest of buyers !.

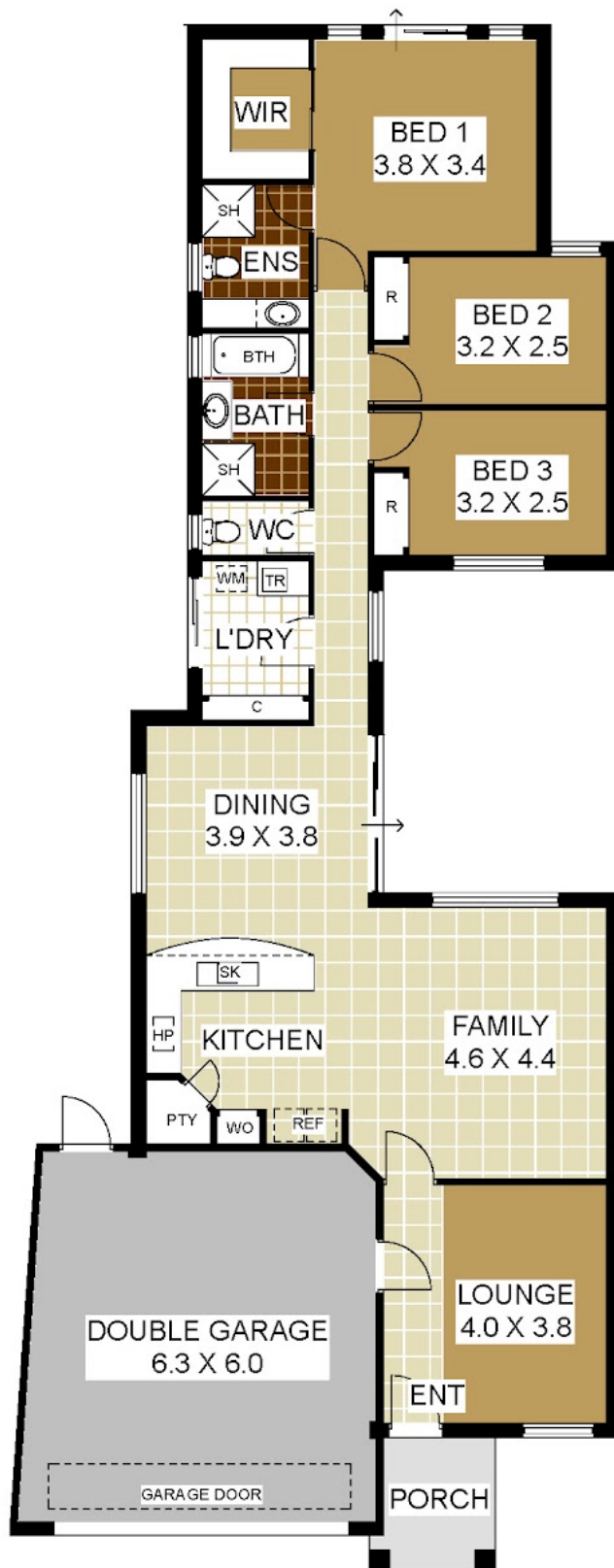
3 BED | 2 BATH | 2 CAR

PRICE:
\$440,000

OPEN FOR INSPECTION:
N/A



Nancy Bird
0415558594
nancybird@atrealty.com.au
www.atrealty.com.au



14B Spruce Terrace, Aubin Grove

HOUSE AREA = 189m²

Disclaimer: Please note this floor plan is for marketing purposes and is to be used as a guide only. All dimensions are estimates only and may not be exact measurements.



PLAN IS APPROXIMATE AND REPRESENTATIONAL ONLY
AREA MEASUREMENTS INCLUDE EXTERNAL WALLS

WWW.TATEFLOORPLANS.COM.AU