



**SOLD**

## SOLID INVESTMENT...LIVE IN OR RENT IT OUT.

Beautiful low-set family home with double lock-up garage, ready to move into. Take advantage of this great opportunity to make the smartest decision yet ??

The existing property:-

- \* Lowset, solid brick and tile family home on 606 m<sup>2</sup> block.
- \* Master bedroom has ensuite, walk-in robe.
- \* 3 Bedrooms, new flooring.
- \* Large built-in wardrobes.
- \* Spacious open plan dining and living area, with new flooring.
- \* Second bathroom is a 3-way bathroom. separate bath & shower, separate toilet and stand-alone vanity.
- \* Air-Conditioner services the dining and living area.
- \* Kitchen features ample cupboard/storage space with large Pantry.
- \* Large Linen Closet.
- \* New flooring throughout.
- \* Large double lock up garage with roller doors.
- \* Garden Shed
- \* Side access.
- \* Fully fenced
- \* Low maintenance gardens/lawn.
- \* Bus stop at your door.

Prime location! just 600mt to Bethania Train Station ( the Brisbane - Gold Coast rail line), 400 mt to Jeta Gardens retirement, 500m to Bethania Lutheran Primary School and walking distance to bunning and Aldi.

Inspection is a must, and will not disappoint.

Don't delay call Roz Abrahams on 0413 07 07 07 or email [roz@atrealty.com.au](mailto:roz@atrealty.com.au)

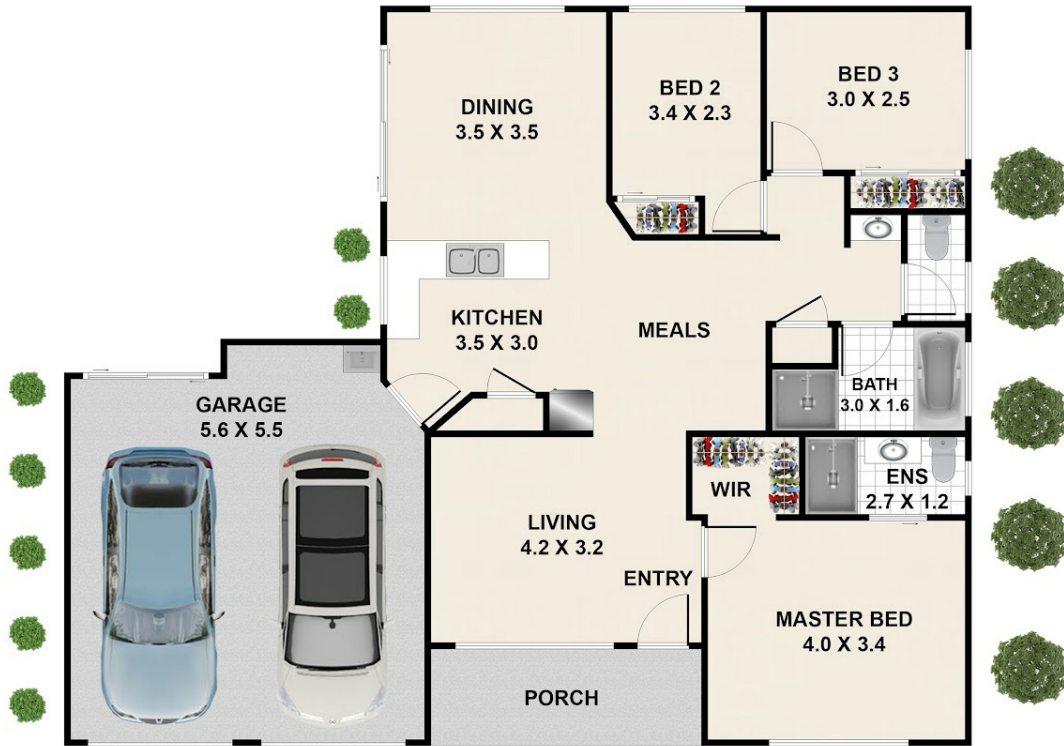
**3 BED | 2 BATH | 0 CAR**

**PRICE:**  
\$359,000

**OPEN FOR INSPECTION:**  
N/A



**Roz Abrahams**  
**0413070707**  
[roz@atrealty.com.au](mailto:roz@atrealty.com.au)  
[www.atrealty.com.au](http://www.atrealty.com.au)



Approx Sqm  
 Inside Areas - 123.9 Sqm  
 Outside Areas - 6.4 Sqm  
 The Total Areas - 130.3 Sqm



**15 Edinburgh Drive, Bethania**

Whilst every attempt has been made to ensure the accuracy of the floorplan shown, all measurements, positioning, fixtures, fittings and any other data shown are an approximate interpretation for illustrative purposes only and are not to scale. No responsibility is taken for any error, omission, miss-statement or use of data shown.

Disclaimer: Please note this floor plan is for marketing purposes and is to be used as a guide only. All dimensions are estimates only and may not be exact measurements.