

12 GAWLER AVENUE MINTO



# FOR SALE

## THE ULTIMATE FAMILY OASIS

It's not often a home with this level of sophistication and elegance presents itself. Meticulously designed to maximise comfort and space, spread over a tastefully designed and impressive floorplan that will cater to your family's growing needs. It's vibrant colour palette combined with modern comforts set in an ideal location make s this home the perfect oasis to raise your family

### Features Include:

- Four generously proportioned bedrooms with built in robes to two and ceiling fans
- Master bedroom includes a walk in robe & ensuite
- Formal living & dining room
- Family / media room
- Well appointed kitchen with ample cupboard & bench space
- Walk in pantry
- Stainless steel appliances
- Dishwasher
- Breakfast bar overlooking family room
- Bright & vibrant bathroom with extra large shower
- Laundry includes built in cabinetry
- LED downlights
- Ceiling fans throughout
- Split system air conditioning
- Internal storage throughout
- Outdoor timber alfresco entertaining deck with sweeping views
- Built in BBQ area with bar fridge
- Fantastic sized backyard
- Established & manicured gardens
- Two garden sheds for additional storage
- Double lock up garage with remote & internal access
- 857sqm block

This exquisite home is located in the popular and family friendly suburb of Minto and within close proximity to Minto Marketplace, local schools, sporting complexes, public transport & child friendly parks are located near by. This home is one to put at the top of your inspection list.

Agency Central believes that all the information contained herein is true & correct to the best of

4 BED | 2 BATH | 2 CAR

### PRICE:

\$829,000 - \$869,000

### OPEN FOR INSPECTION:

N/A

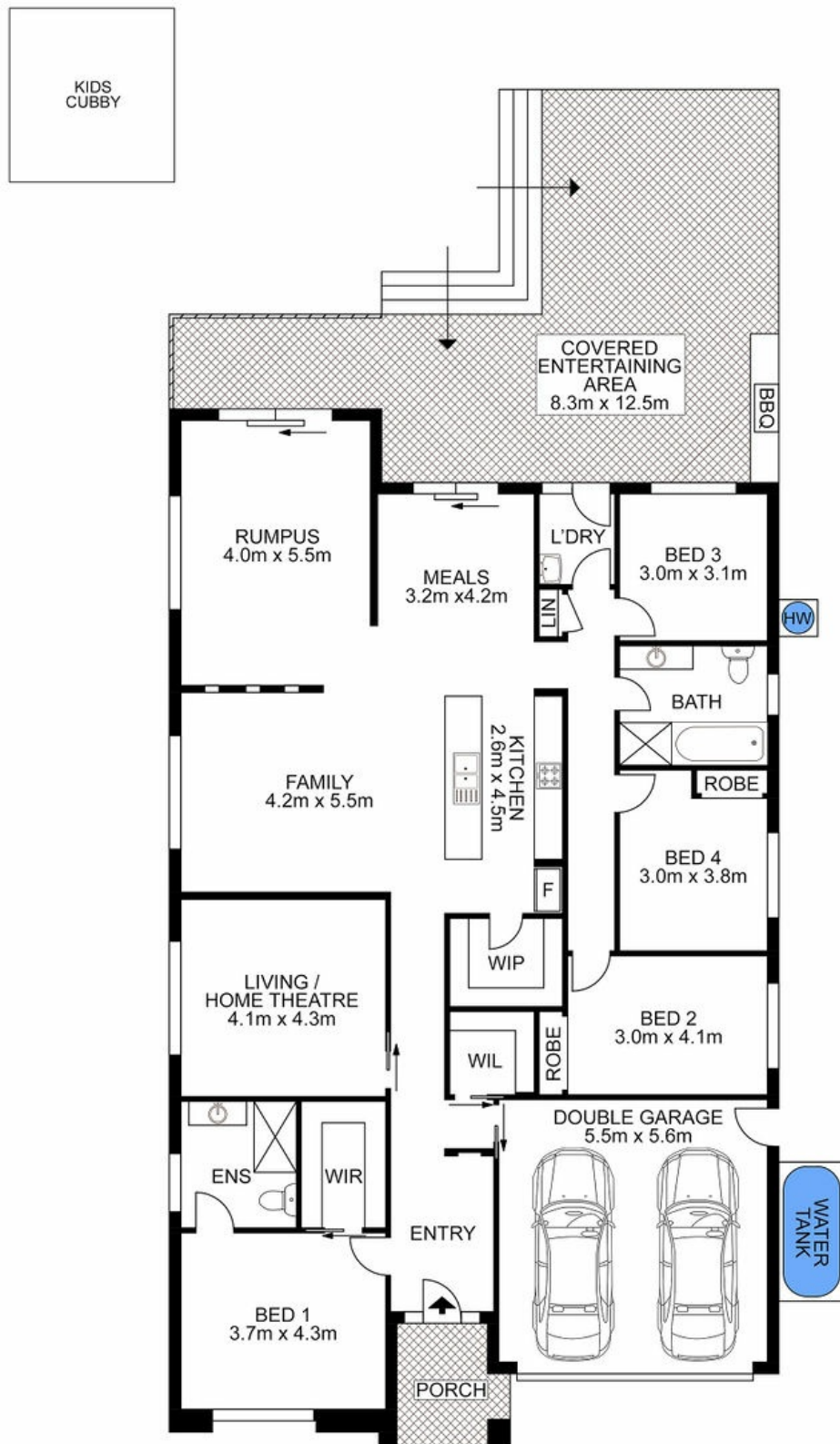


**Huss Al Salemi**

**0411699419**

[huss@atrealty.com.au](mailto:huss@atrealty.com.au)

[www.agencycentral.com.au](http://www.agencycentral.com.au)



 AGENCY

Disclaimer: Please note this floor plan is for marketing purposes and is to be used as a guide only. All dimensions are estimates only and may not be exact measurements.

12 Gawler Avenue, Minto

Huss Al Salemi • All measurements are approximate • Drawn for marketing purposes only

0411699419

huss@atrealty.com.au

[www.agencycentral.com.au](http://www.agencycentral.com.au)

