



FOR SALE

MULTIPLE HOMES -TREE CHANGE WITHIN MINUTES OF KENMORE VILLAGE

If you have been dreaming of living in the serenity of your own private oasis, your wishes could be fulfilled. Located adjacent to Brisbane Forest Park on the western foothills of Mt-Coot-tha, these highly desirable residences were designed and built by the renowned Knowlman McDonald McMillan architects/builders and will attract and delight you from the moment you enter.

Positioned on approximately 11 acres and surrounded by secluded forest, it is accessible by a tree lined driveway and is tucked away offering your own quiet paradise with complete privacy in a prestigious location.

The large formal entrance really sets the tone for what is to follow with the impressive 9ft ceilings flowing throughout to create a delightful sense of space. Moving through the home, you are greeted with light and airy open plan living overlooking the stunning natural forest surrounds and mesmerising Billabong.

High-quality features exude from every corner of this home and include parquetry flooring, decorative cornice, a cosy open fire place for those cool winter nights and a well-appointed kitchen boasting high end appliances such as a Miele Induction cook top and Siemens dishwasher.

Cleverly designed to offer separation and incorporating 5 sizeable bedrooms – all with built ins, ceiling fans and plenty of storage space, this home ticks all the boxes.

For those quiet and contemplating moments, head outdoors to the over-water gazebo built from reclaimed timber sourced from the original Redcliffe bridge, to enjoy a morning cup of tea or afternoon wine. The expansive Billabong provides a paradise for wildlife and the perfect place to catch cool summer breezes and peaceful views.

Conduct your own home business by continuing to offer the already established income producing cottage accommodation, or choose to have your extended family close enough to enjoy their company but far enough away to take advantage of complete privacy. There's so much on offer with endless opportunities.

9 BED | 6 BATH | 7 CAR

PRICE:

Sold by Helana and Nada

OPEN FOR INSPECTION:

N/A

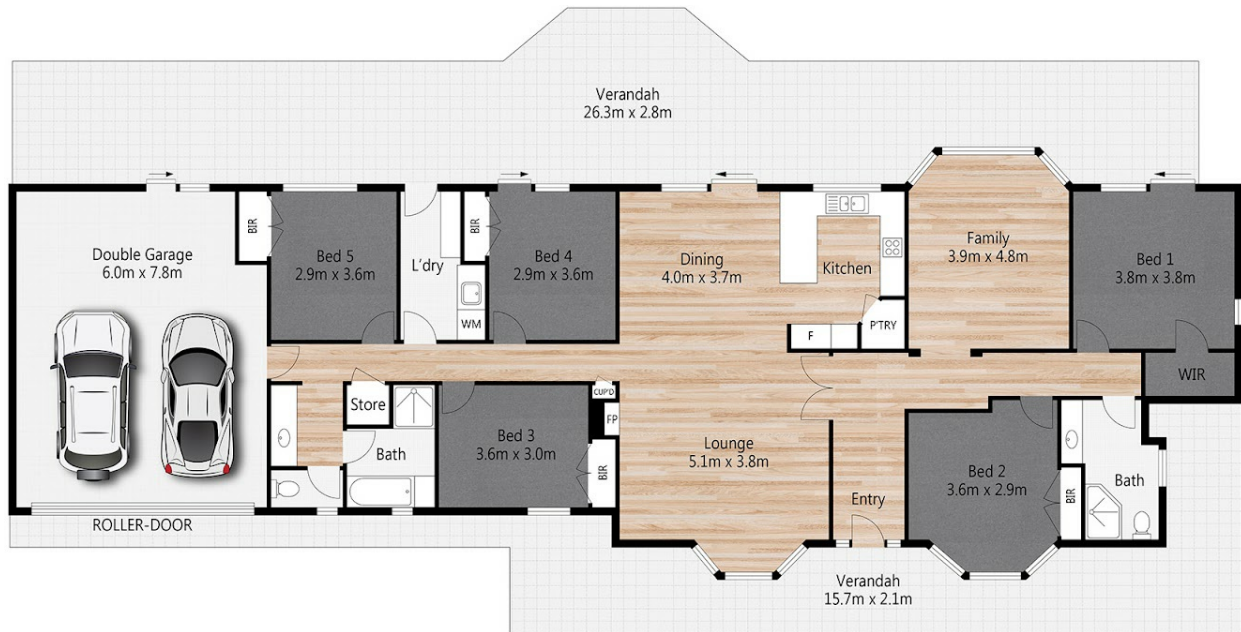


Helana Kuhl

0447522643

helana@atrealty.com.au

www.atrealty.com.au



222 Gap Creek Road KENMORE HILLS

5 | 2 | 2 | 384m² | 43950m²

All dimensions are approximate; they are subject to errors and inaccuracies and no liability will be accepted.
Plans are shown for marketing purposes only.

Disclaimer: Please note this floor plan is for marketing purposes and is to be used as a guide only. All dimensions are estimates only and may not be exact measurements.