



**SOLD**

## SMALL ACRES (1.26HA) CLOSE TO THE BEACH..

The price of small rural blocks close to Nambucca Heads and it's beautiful beaches continue to rise and this is the perfect time to make your move to the country.

You can build that special farmhouse and have the vege garden ,fruit trees ,chooks and that pony for the kids.

Located approximately 9kms from Nambucca Heads , 6kms to Macksville and 7kms to Bowraville it is a very handy area to live and work.

Be quick to secure your new rural lifestyle , call today to organise an inspection..

NOTE: We are a local real estate agency with our head office on the Gold Coast.

We make no representation or warranty as the accuracy, reliability or completeness of the information relating to the property. Some information has been obtained from third parties and has not been independently verified. Accordingly, no warranty, representation or undertaking, whether express or implied, is made and no responsibility is accepted by us as to the accuracy of any part of this, or any further information supplied by or on behalf our behalf, whether orally or in writing.

[Read less](#)

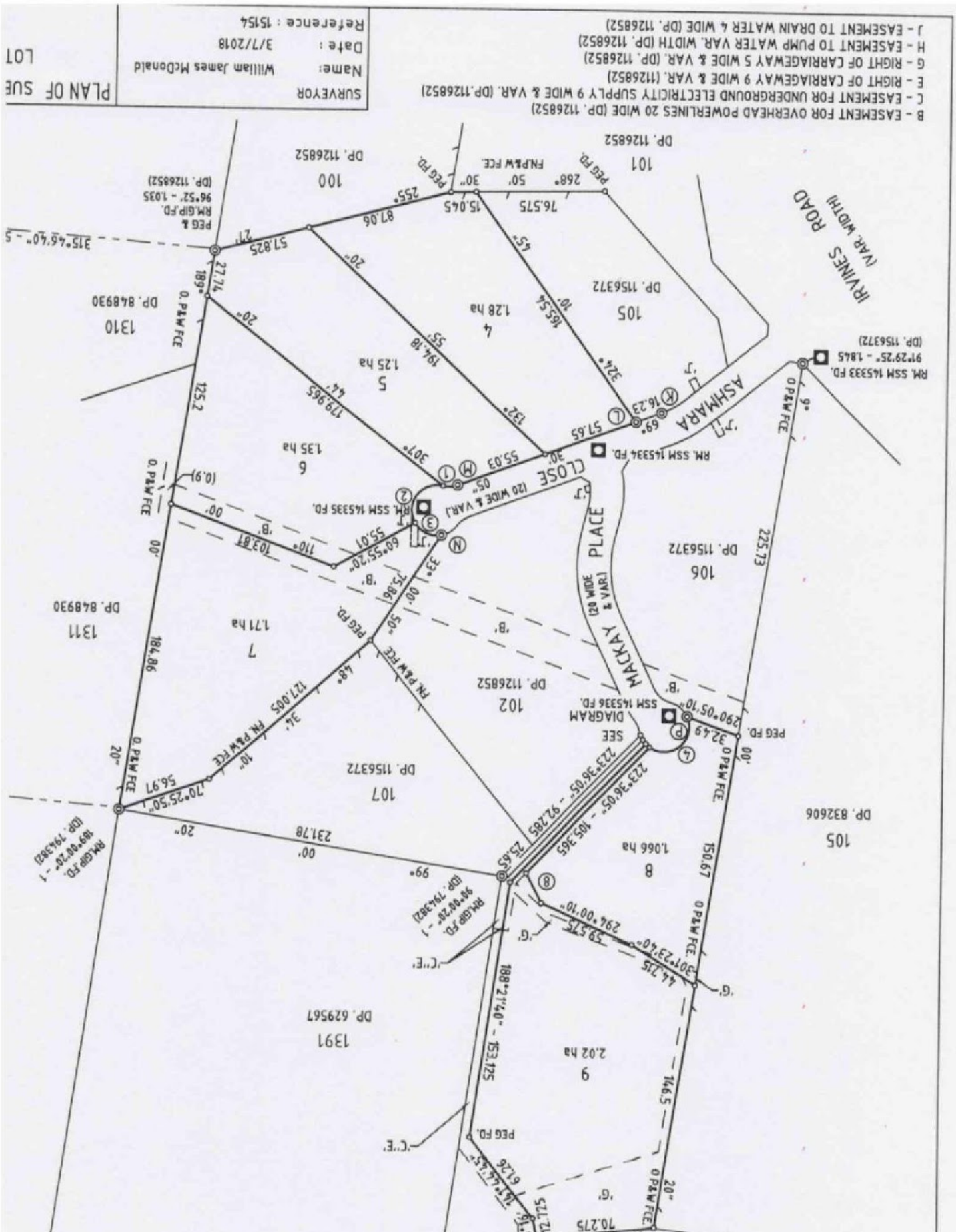
0 BED | 0 BATH | 0 CAR

PRICE:  
\$220,000

OPEN FOR INSPECTION:  
N/A



**Craig Bellamy**  
0412080287  
craig.bellamy@atrealty.com.au  
[www.atrealty.com.au](http://www.atrealty.com.au)



Disclaimer: Please note this floor plan is for marketing purposes and is to be used as a guide only. All dimensions are estimates only and may not be exact measurements.

