



FOR SALE

EXCLUSIVE FAMILY LIVING

Located in a newly established pocket of Braemar sits your dream family home. Comfort and practicality can be found at every turn, every detail has been meticulously designed to maximise your quality of living spread over a vibrant and impressive floorplan, equipped with modern comforts situated in an ideal location to raise a family and make memories.

Features Include:

- Four generously proportioned bedrooms with built in robes
- Master suite includes a walk in robe & ensuite with dual basins
- Formal lounge & dining
- Family room with built in gas fireplace
- Study
- Media room
- Tastefully designed kitchen with ample cupboard & bench space
- Breakfast bar overlooking family room
- Walk in pantry
- Gas cooking
- Stainless steel appliances including dishwasher
- Bright & vibrant bathroom with freestanding bathtub & frameless shower
- Linen closet
- Ducted air conditioning
- Plantation shutters
- Outdoor alfresco area
- Spacious low maintenance backyard
- Garden shed
- Side access
- Double garage with remote & internal access
- Established manicured gardens
- 760 sqm block

This exquisite home is located amongst quality built home in a newly established pocket of Braemar. Being only minutes away from the bustling cafes and restaurants of Mittagong & surrounded by beautiful scenery. Local schools, shops & transport are nearby making this home the ideal location to raise a family. This home is one to put at the top of your inspection list.

4 BED | 2 BATH | 2 CAR

PRICE:

\$705,000 - \$729,000

OPEN FOR INSPECTION:

N/A

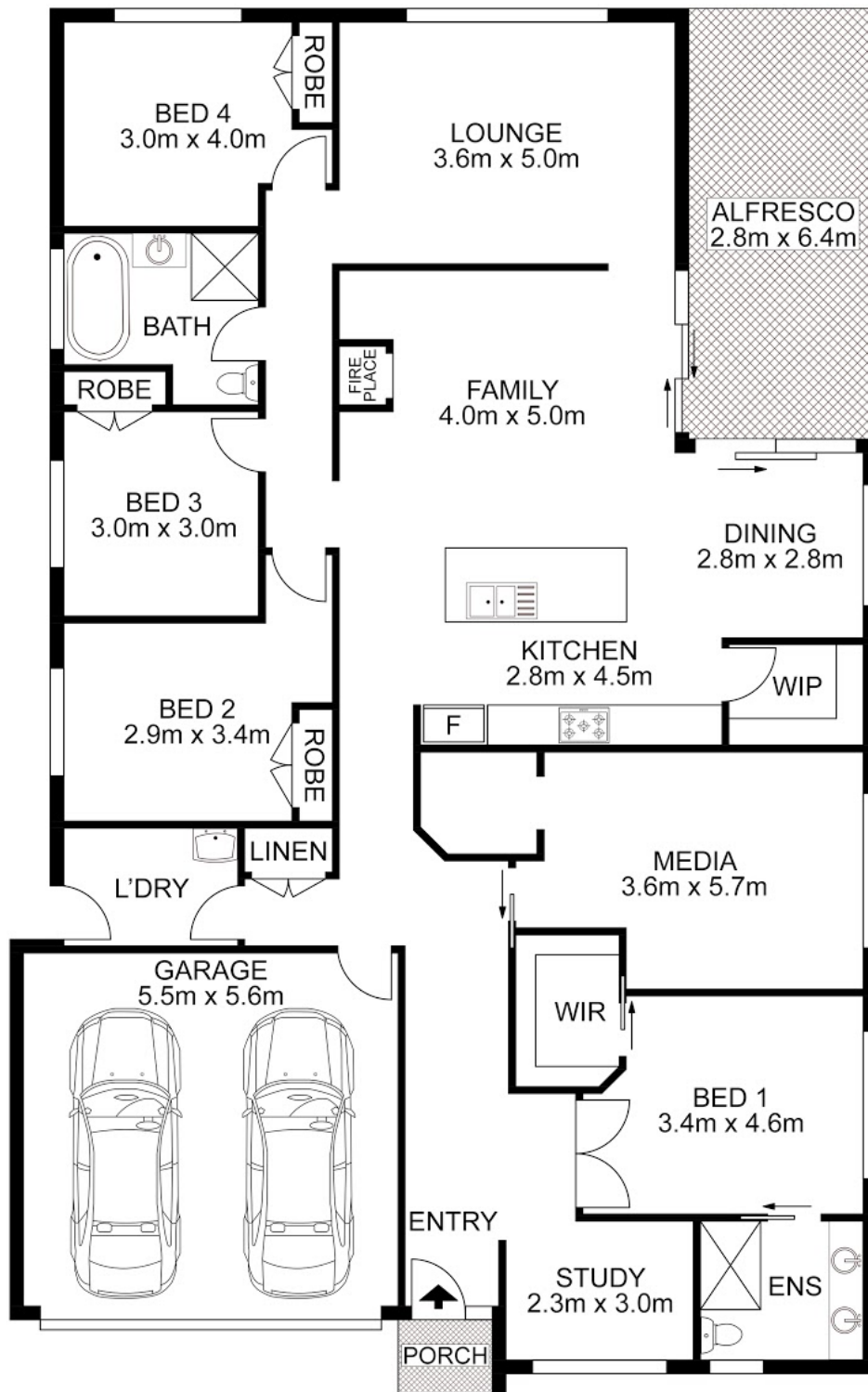


Bobby Reynolds

0432173566

bobby.reynolds@atrealty.com.au

agencycentralwilton.com.au



AGENCY

Disclaimer: Please note this floor plan is for marketing purposes and is to be used as a guide only. All dimensions are estimates only and may not be exact measurements.

8 Isedale Road, Braemar

Bobby Reynolds All measurements are approximate • Drawn for marketing purposes only

0432173566

bobby.reynolds@atrealty.com.au

agencycentralwilton.com.au

