

SOLD

FOR SALE 26 BARTON STREET, EVERTON PARK

We are proud to invite you to 26 Barton St, Everton Park.

As they say **FIRST IMPRESSIONS** are everything. On entry to this Pure Opulent residence which invites you in with its large welcoming oversized front door and magnificent staircase leading you to the top level. With 9ft ceilings and open plan living areas, we have on offer five (5) large bedrooms, three (3) bathrooms as well as multiple living spaces both indoors and outdoors. With an easy to maintain backyard and inground pool, this home spreads over 305 square metres.

The interior boasts beautiful timber flooring and porcelain tiles with neutral tones throughout, which is sure to impress.

On offer at Ground level:

- Large welcoming oversized entry door and high 9ft ceilings
- Three large 3 x 4.5 m2 bedrooms, all including built-in wardrobes.
- Family bathroom with shower, bath, stone benchtops and ample storage
- Separate toilet
- Separate laundry
- Great storage under stairs
- This downstairs zone is perfect for the separation either for older children or grandparents retreat.
- Large tiled family living with sliding doors inviting you out to a tiled undercover spacious alfresco. This fully fenced backyard with its manicured grassed area has an inground pool which you will find is a great spot for the kids and pets and of course to entertain your friends and family. With plenty of space to add all your outdoor furniture. Perfect for those summer BBQ's

5 BED | 3 BATH | 2 CAR

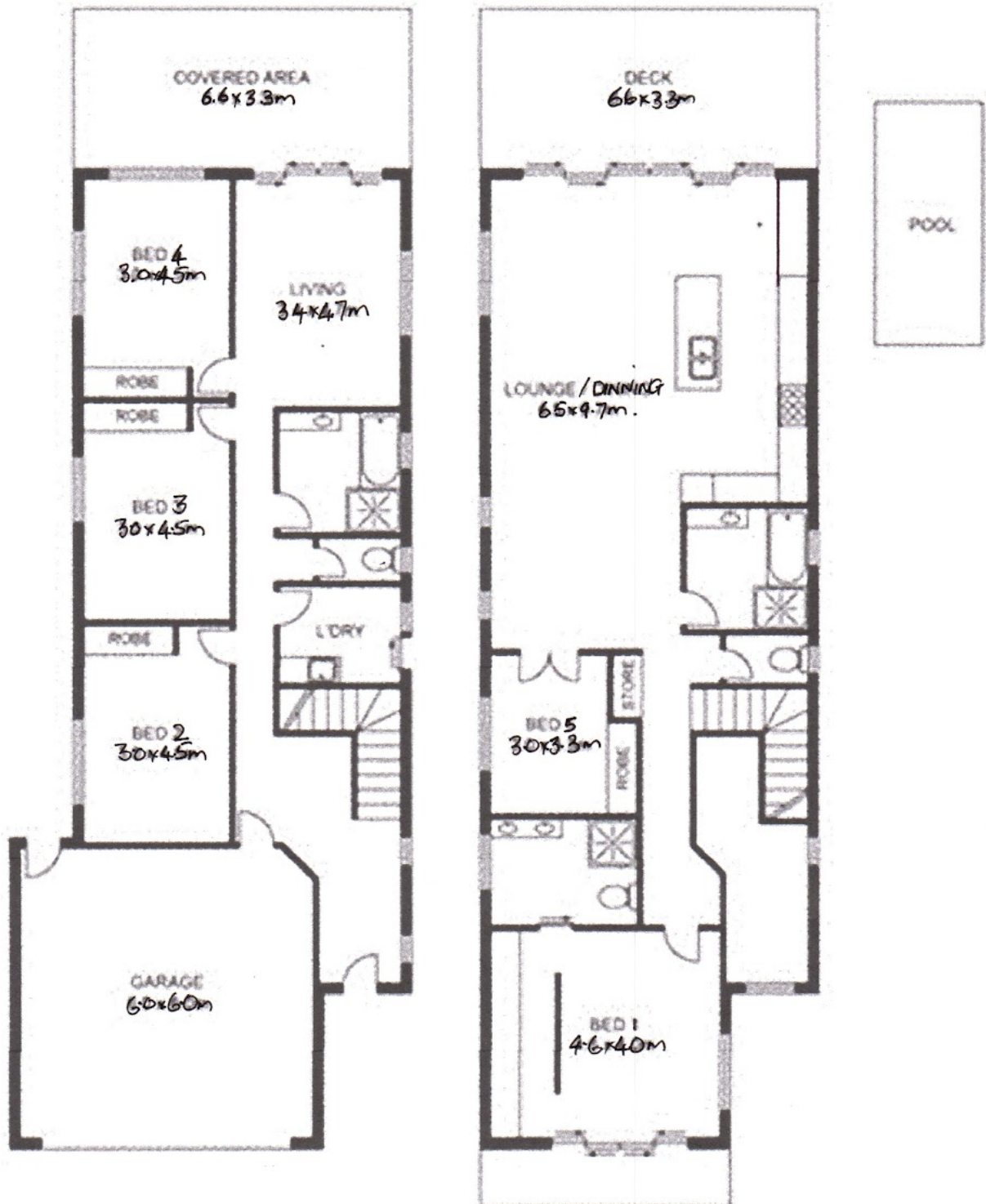
PRICE:
\$908,000

OPEN FOR INSPECTION:
N/A



Beverley Gibbons
0420807083
beverley.gibbons@atrealty.com.au
www.atrealty.com.au

26 BARTON STREET, EVERTON PARK



APPROX INTERNAL FLOOR AREA LOWER LEVEL - 130 m2

Disclaimer: Please note this floor plan is for marketing purposes and is to be used as a guide only. All dimensions are estimates only and may not be exact measurements.

Beverley Gibbons

0420807083

beverley.gibbons@atrealty.com.au

www.atrealty.com.au

@realty