



## FOR LEASE

### EXECUTIVE STYLE HOME LOCATED IN THE HINTERLAND OF NORTHERN NSW

This freshly painted 5 bedroom home is located in the convenient location of Eltham, set on 2 acres with, 2 separate living areas a large well equipped open plan kitchen loads of natural light built-in wardrobes 2 full bathrooms and an extra toilet with hand basin. Front and rear covered entertaining areas with elevated views. A double remote garage and a 2 bay colour bond shed a ride on mower are provided and pool equipment.

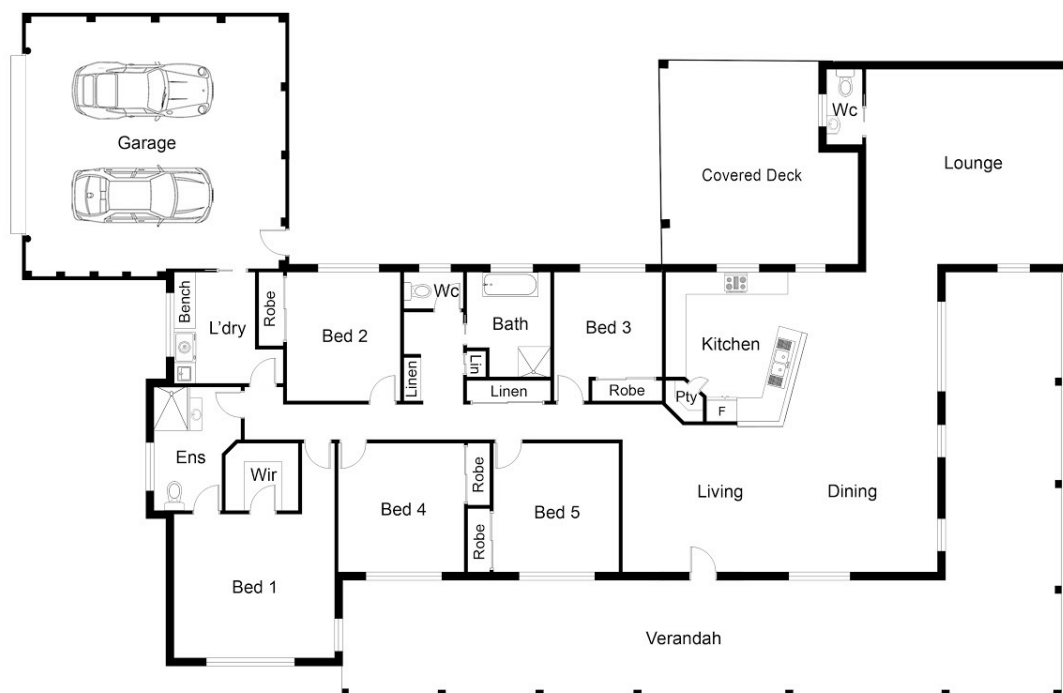
5 BED | 3 BATH | 4 CAR

PRICE:  
\$1,000 per week

OPEN FOR INSPECTION:  
N/A



**Peta Thompson**  
**0403123115**  
petathompson@atrealty.com.au  
[www.atrealty.com.au](http://www.atrealty.com.au)



This floor plan including furniture, fixture measurements and dimensions are approximate and for illustrative purposes only. Boxbrowne.com gives no guarantee, warranty or representation as to the accuracy and layout. All enquiries must be directed to the agent, vendor or party representing this floor plan.

26 Federation Drive, Eltham

**Peta Thompson**  
**0403123115**  
petathompson@atrealty.com.au  
[www.atrealty.com.au](http://www.atrealty.com.au)

