

FOR SALE

PRESTIGIOUS POSITION WITH CITY VIEWS

Under Contract with Multiple Offers.

Must be SOLD! Present All Offers.

Dream home opportunity awaits!

Situated on the corner of Cracknell Rd & Juster St and surrounded by million-dollar homes, this highly elevated 439m² vacant land is a total treasure. Inherited from a rich history, this block was formerly occupied by the renowned "DEVON" residence, which had an air raid shelter from the WW2.

Our 283m², ready-to-build design features a remarkable two-and-half level split design to optimise the City Views available. The front facade features attractive french windows and a perfect blend of modern and traditional materials.

Firstly, you are greeted by the formal porch fully undercover and extra-wide 1600mm double front french door. On the ground floor, large open plan kitchen comes ample sized pantry and island bench with stone-top; formal dining area connects to the outdoor alfresco area as well as large living area. Through the sliding door in the living area, you are now in the large, fully fenced courtyard with lush green landscaping included. Formal laundry comes with plenty of bench space and storage. The fourth bedroom and a full-service bathroom are also located on the ground level.

Upstairs, you won't miss the enormous size that this 2nd living area offers as well as the breathtaking City Views that will be on offer through the windows. Master bedroom is equipped with ensuite that has double vanity as well as huge W.I.R. The remaining two bedrooms are both large with built-in-robos, sharing the family bathroom & separate toilet. There is also additional storage space on this level.

Our builder has included turn-key solution in the price as well as level of finishes/specs:

1. 2740mm ceiling heights on both levels
2. High-end French door/windows included
3. 20mm Stone benchtops
4. European appliances

4 BED | 3 BATH | 2 CAR

PRICE:

From \$1.13mil or Land Only \$630k+

OPEN FOR INSPECTION:

N/A

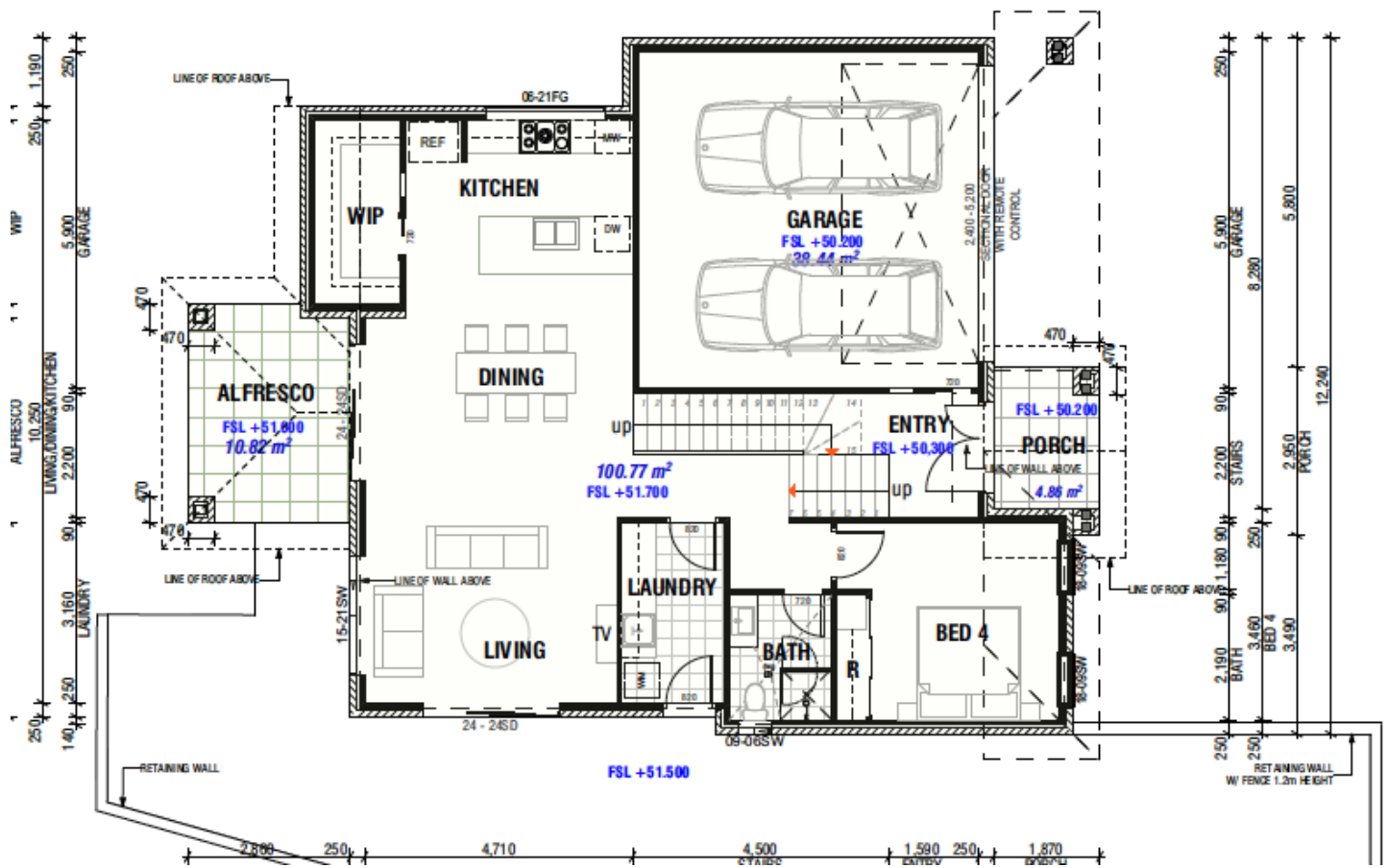


Tony Xu

0421861668

tonyxu@atrealty.com.au

www.atrealty.com.au



Disclaimer: Please note this floor plan is for marketing purposes and is to be used as a guide only. All dimensions are estimates only and may not be exact measurements.