



FOR SALE

NEAR NEW HOME - INDIVIDUAL DESIGN - CENTRALLY LOCATED IN POPULAR CAMBRIDGE - LOW MAINTENANCE LIVING AT ITS BEST!

Brand new architecturally designed home located in Cambridge only 2 minutes walk to the local primary school and local shop! Finalist in 2019 HIA awards. Surrounded by newer homes, this impeccably built home is the last to be built in the street and offers 4 bedrooms, sitting room, internally accessed garage, sunny north facing private backyard with large timber sundeck and well landscaped gardens. The home has been built by "South East Building" with an emphasis on detail and customised design. Tas-Oak architraves and skirtings feature throughout, double glazed windows throughout, stunning kitchen with stone benchtops, huge pantry, stunning bathroom with two way access to master bedroom and quality flooring throughout. Cost effective LED lights feature throughout the home, and heating costs will be minimal with insulated ceilings, walls and double glazed windows working in unison with the inverter heatpump to provide a comfortable environment year around at minimal cost.

- Near New Home
- Individual Design
- Double glazed windows throughout
- Three, potentially four bedroom home
- LED Lighting throughout
- Low Maintenance living
- Garage +2 off street parks
- 6 Star energy rating

Quality custom built homes are hard to come by, please contact Ben Palmer using the links on this page for any further information or to arrange an individual inspection.

4 BED | 2 BATH | 1 CAR

PRICE:

Offers Over \$559,000

OPEN FOR INSPECTION:

N/A



Ben Palmer

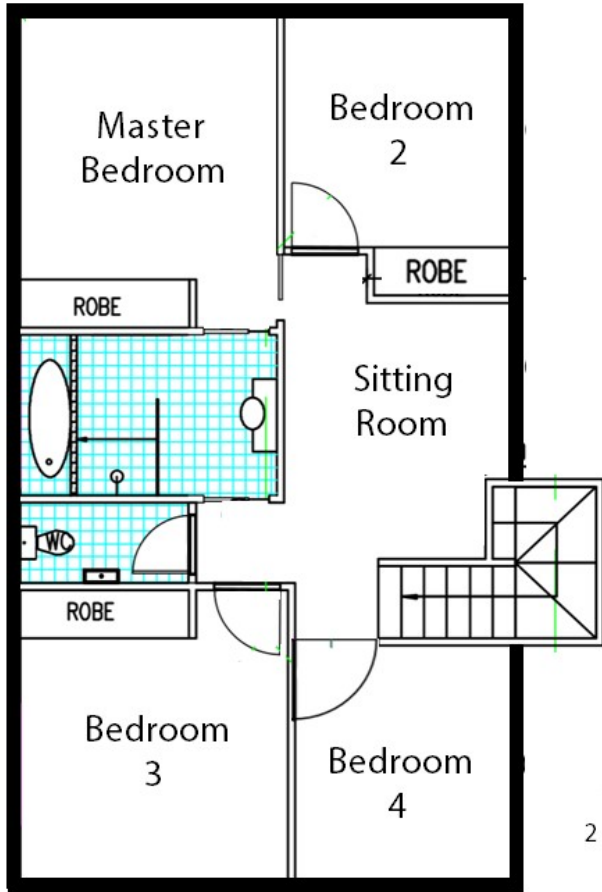
0417556731

benpalmer@atrealty.com.au

hobarthomes.com.au

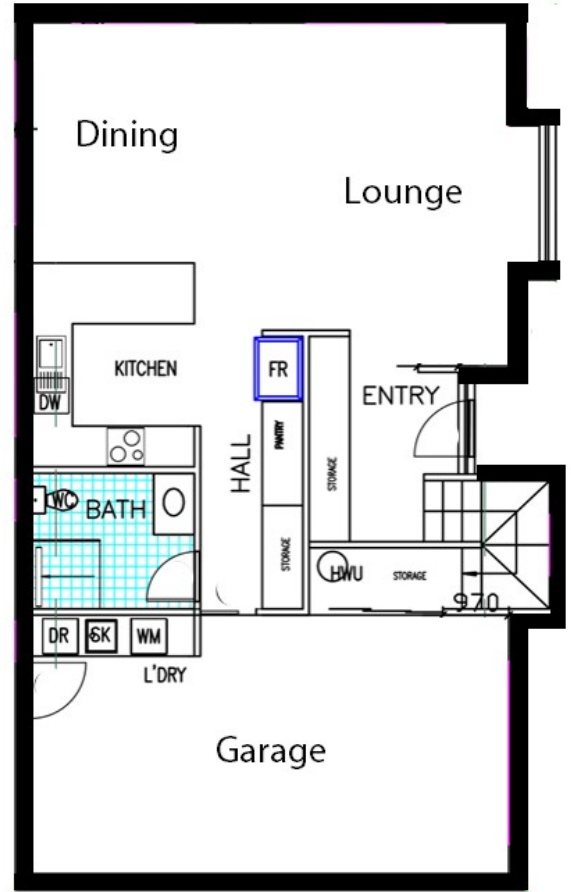
2/6 Ovata Close, Cambridge

Upper Level



170m2
approx
1 Car Garage
2 off street parks

Lower Level



Disclaimer: Please note this floor plan is for marketing purposes and is to be used as a guide only. All dimensions are estimates only and may not be exact measurements.