



FOR SALE

LARGE FAMILY HOME IN POPULAR LOCATION!

This impeccable north facing family home is situated on 728m2 and offers you:

- Modern kitchen
- Polished timber floors
- Modern bathrooms
- Cable TV
- Air conditioning
- Solar electricity system
- Large vegetable garden
- Mango tree
- Side Access
- Fabulous access to shops, schools, public transport, beach and sport clubs

This home has been designed for a family to live in comfort and in a quiet neighbourhood.

The downstairs is perfect for working from home or as a teenagers retreat.

No work needed on this magnificent home, it's ready for you to move in and start enjoying the lifestyle!!

Call Gwen to arrange your own private inspection.

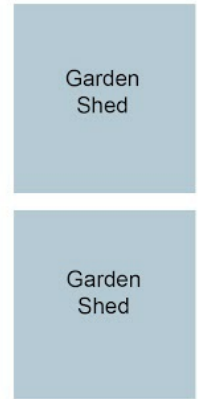
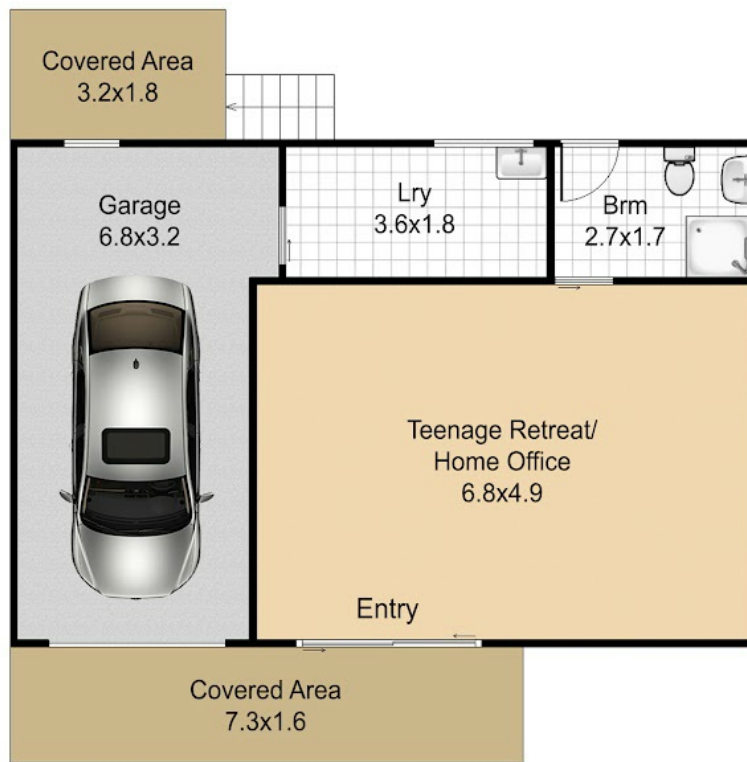
3 BED | 2 BATH | 1 CAR

PRICE:
\$463,000

OPEN FOR INSPECTION:
N/A



Gwen Toholka
0419737657
gwen@atrealty.com.au
www.atrealty.com.au



GROUND FLOOR



UPPER FLOOR

Disclaimer: Please note this floor plan is for marketing purposes and is to be used as a guide only. All dimensions are estimates only and may not be exact measurements.

Kippa-Ring

APPROX.COM

External - 32