

**SOLD**

## CASH COW & GROWTH OPPORTUNITY

Are you looking to start or add to your investment portfolio? Then look no further!

Option to buy one or both of the properties!

Whilst un-renovated, these properties have demonstrated great rental yield as-is, plus there is great potential to enhance the rental yield by future renovation works.

This golden cash-flow opportunity consists of two free-hold townhomes, each featuring 4 bedrooms, 2 bathrooms, and 2 car spaces. The properties also enjoy direct street frontage.

Both of the two properties have the same three-level layout and adjoining each other: The ground level has off-street parking spaces and the spacious fourth bedroom which connects to the large living/rumpus room and the courtyard; It can also easily be converted into two bedrooms.

The 2nd floor comes with a sizeable kitchen, an open plan living and dining area which connects to the balcony and the 2nd bedroom with lockable two-way access to the bathroom. The 2nd balcony is accessible by the bedroom and the living area.

On the 3rd floor, the remaining two bedrooms share the two-way bathroom as well as the balcony.

Some of the highlights are:

1. Estimated rental yield over 5% gross per annum.
2. Hot-spot position, proven capital growth history.
3. Great uplift potential on rental returns with renovation works.
4. Medium-density zoning with potential future development subject to council approval.

Location is the key here.

- + 350m walking to Park Rd, one of the most vibrant commercial & business precincts.
- + 550m walking to Milton Station
- + 600m walking to Milton Ferry Terminal
- + Within 3km\* to the Brisbane CBD and more...

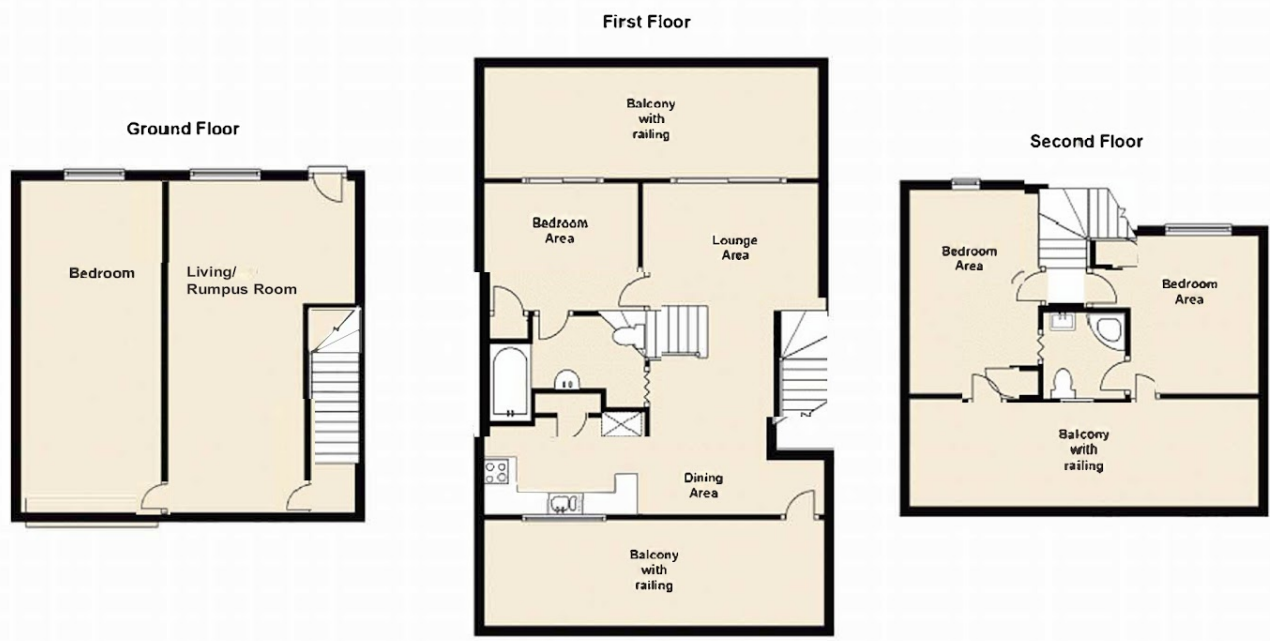
**8 BED | 4 BATH | 4 CAR**

**PRICE:**  
\$622,000

**OPEN FOR INSPECTION:**  
N/A



**Tony Xu**  
**0421861668**  
tonyxu@atrealty.com.au  
[www.atrealty.com.au](http://www.atrealty.com.au)



Disclaimer: Please note this floor plan is for marketing purposes and is to be used as a guide only. All dimensions are estimates only and may not be exact measurements.