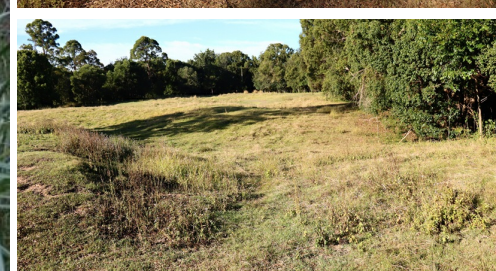


ADDRESS UPON REQUEST



**SOLD**

## GREAT STARTER PROPERTY

Here is the perfect property to get into the market. 5 acres (2.12ha) comprising of fertile creek flats with the tree lined Deep Creek forming one long boundary. 6m x 9m Colorbond shed with concrete floor and electricity connected. It is air-conditioned, fully lined and there is a kitchenette with gas stove and dishwasher. Also 1 large bedroom, laundry, shower and toilet. Covered carport and a 5,000gal water tank. The shed sits on a rise with views over this picturesque property and to nearby Gympie. Mature, established fruit trees, species include: Macadamia Nut, Grapefruit, Lemon, Loquat, Peach, Pecan Nut, Persimmon and Cherry Guava.

The property is fenced into one paddock and the shed yard. Situated at the end of a no through bitumen road, a few minutes drive east of Gympie. Come and check out this little beauty today.

1 BED | 1 BATH | 1 CAR

PRICE:  
\$170,000

OPEN FOR INSPECTION:  
N/A



**Wayne and Christine Fewtrell**  
**0408450856**  
christine@atrealty.com.au  
[www.fewtrellrealty.com](http://www.fewtrellrealty.com)