



SOLD

HISTORIC HOME BURSTING WITH CHARACTER AND POTENTIAL

Real Estate locals, Gerrie Bowden, Andrew Emms and Mark Roemermann present ...

- * Idyllic family home with enormous potential and a sought-after location
- * Enjoy indoor-outdoor living with multiple outdoor spaces for entertaining
- * Attractively presented with stunning original features including pine floors and decorative detailing
- * HomeBuilder Grant
- buying now could provide you with more than \$25,000 in grants and cost savings towards any further renovation
- * Moments from shops, the local tavern, schools, parks and fitness centres
- * A must-see property for families, renovators or savvy investors
- * Walk to USC's new campus in the heart of Petrie

Packed full of character, charm and potential, this gorgeous country farmhouse is ready to be transformed into an elegant and contemporary abode. This is a rare opportunity to secure a slice of history.

It is believed the residence was built in the early 1900's and was owned by George Houghton, one of the original pioneers of the area. Rumour has it, George's wife named the home 'Orontes' after the RMS Orontes, the ship she sailed on when immigrating to Australia from England.

Meticulously crafted and still standing proudly, the home boasts solid ironbark framing, Baltic pine floorboards and a solid hoop pine door. The layout spans two levels and offers multiple light-filled living spaces along with the potential for dual living.

Imagine hosting friends and family in the formal lounge and dining area before moving to the entertaining balcony where you can relax and admire the peaceful surrounds. The open-plan kitchen, meals and family space is ready to be transformed into a gourmet haven plus there's a sunroom adjacent to the third bedroom/office for added convenience.

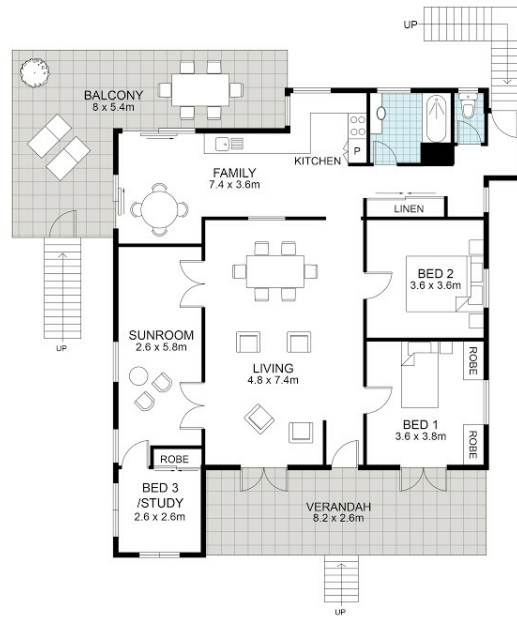
3 BED | 2 BATH | 2 CAR

PRICE:
\$506,000

OPEN FOR INSPECTION:
N/A



Andrew Emms
0427734743
andrew.emms@atrealty.com.au
www.atrealty.com.au



**15 Connors Street,
Petrie**



Floor plan measurements are approximate and for illustration purposes only.
Scale in metres.
Created by Rolley Photo Media.

Disclaimer: Please note this floor plan is for marketing purposes and is to be used as a guide only. All dimensions are estimates only and may not be exact measurements.