

# SOLD

## BRAND NEW MODERN & CONVENIENT

The Cleverley designed Townhouse offer a generosity of space with flexible layout configuration. Each facet of the refined and elegant interior design has been thoroughly contemplated with stylish finishes and quality materials throughout. Spread over a two-story floor plan, the level of sophistication and comfort has been maximized to ensure you get the most enjoyment. Downstairs are bright living and dining areas accompanied by an open-plan kitchen fitted with stone benchtops and stone splashbacks, premium stainless-steel appliances and dishwasher. The bedrooms upstairs share Upmarket bathroom with luxurious porcelain tiles and quality fittings. All amazing features complete the profile of perfect home for those looking for a relaxed family lifestyle coupled with spacious and low maintenance living. There are only four residences on this site and available Unit 2 is Highly Recommended for the top of your Inspection List.

### Property Features:

- Kitchen with Stone Benchtops and Splashbacks
- Quality stainless steel appliances
- Gas cooking
- Double glazed windows
- Powder room
- Split system air-conditioning
- Ducted Heating
- Remote Garage with rear access
- Low maintenance backyard

Conveniently located in family friendly suburb and within close proximity to all Local amenities and M1 Freeway.

This wonderful opportunity will appeal to the First home buyers, Investors or those simply wanting to downsize on their land size.

To assist in facilitating inspections we are available 7 days a week.

Call Marko Rankovic 0427 771 810

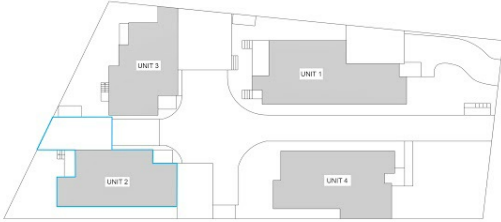
3 BED | 2 BATH | 2 CAR

PRICE:  
\$595,000

OPEN FOR INSPECTION:  
N/A



**Marko Rankovic**  
0427771810  
markorankovic@atrealty.com.au  
[www.atrealty.com.au](http://www.atrealty.com.au)



Property Address : 2/22 Aquila Crescent Endeavour Hills

Disclaimer: Please note this floor plan is for marketing purposes and is to be used as a guide only. All dimensions are estimates only and may not be exact measurements.