



SOLD

**OUTSTANDING OCEAN & CITY LIGHT VIEWS
BELLE MAISON BROADBEACH**

Situated on the North-East corner, this spacious apartment enjoys panoramic views of the Pacific Ocean and Surfers Paradise night lights. Belle Maison sits on approximately 8000 sq metres of beautifully manicured gardens with a large heated swimming pool, two full size tennis courts, BBQ areas, gymnasium and spa pools located in a blue chip location in Broadbeach. Spacious north/east aspect, amazing views, premier building & blue chip location = A luxurious Gold Coast lifestyle opportunity!

Features include:-

- High floor & very spacious - 158 sq m in size
- Open plan lounge/dining & kitchen
- Best aspect - north/east, winter sunshine & summer breezes
- Separation and privacy of the two king size bedrooms both with walk in robes
- Spacious kitchen boasting an abundance of cupboard space
- 1 car space plus 1 separate storage cage
- Fully furnished / White plantation shutters throughout
- Separate entry and full size laundry
- Body Corp Levies \$170 per week with a very healthy sinking fund
- Council Rates approx \$55 per week
- Water Rates approx \$35 per week
- Pet friendly building.
- Great on-site management
- Beach, shops, restaurants, cafes, bus stop and tram station a short stroll away.

Facilities include:-

20 metre heated swimming pool, 2 spa pools, 2 full size tennis courts, residents lounge, gymnasium, 2 BBQ areas all set on 2 acres of beautifully manicured grounds.

Do you deserve a piece of paradise? Do call me quickly and let me show you everything this unique property has to offer!

2 BED | 2 BATH | 1 CAR

PRICE:
\$825,000

OPEN FOR INSPECTION:
N/A



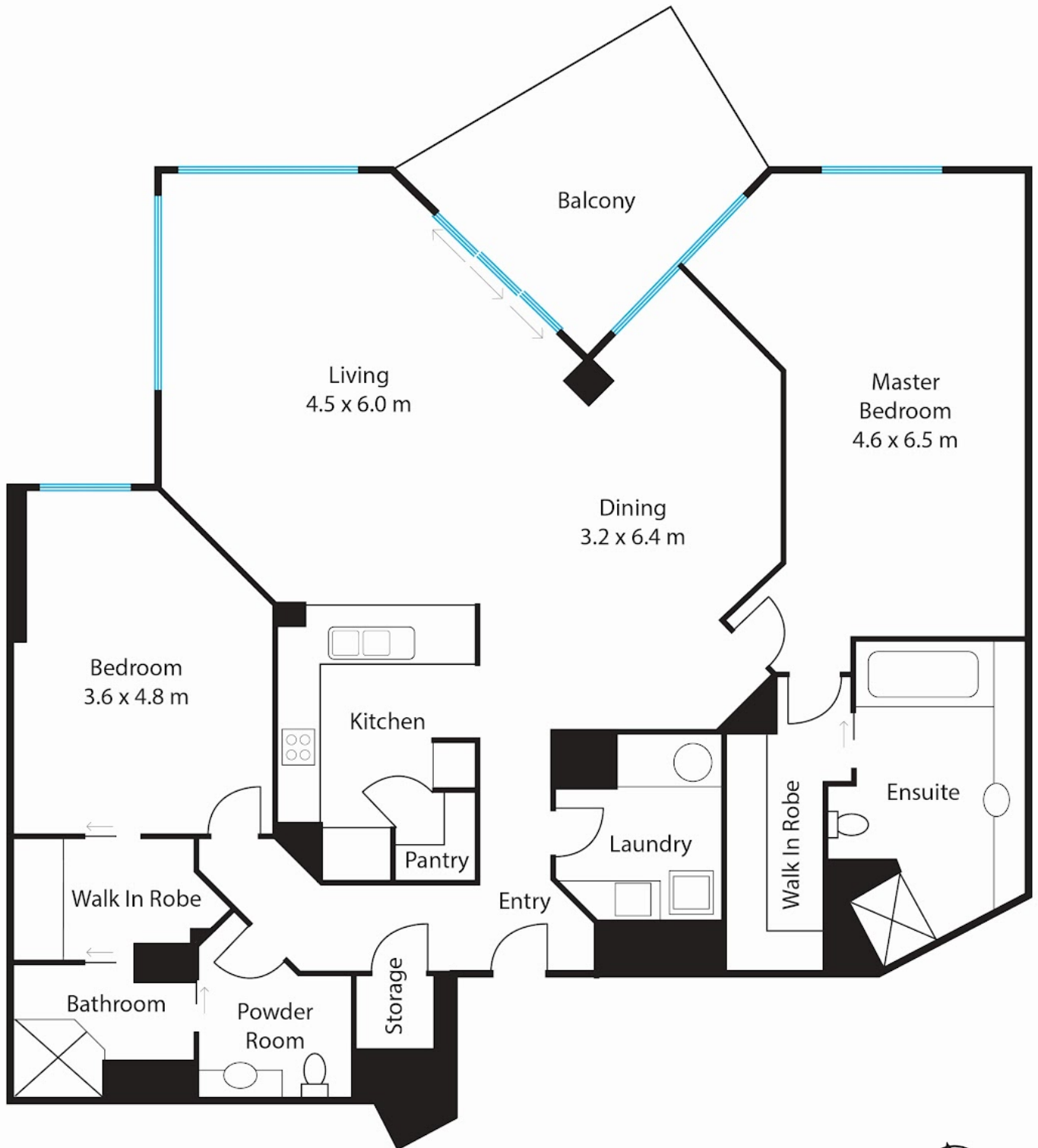
Janet Harris
0404482240
janetharris@atrealty.com.au
www.atrealty.com.au

129 Surf Parade, Broadbeach, QLD, 4218



Janet Harris 0404 482 240

janetharris@atrealty.com.au



Disclaimer: Please note this floor plan is for marketing purposes and is to be used as a guide only. All dimensions are estimates only and may not be exact measurements.

Please note: All dimensions give are approximate and for illustrative purposes only.

Janet Harris
0404482240
janetharris@atrealty.com.au
www.atrealty.com.au

www.odigdesigns.com.au - LOGOS • FLOORPLAN/SITEPLAN REDRAWS • IMAGE ENHANCEMENTS

