



SOLD

NOT TO BE MISSED, HOP SKIP AND JUMP TO SCHOOL

Located meters from Tuart Rise Primary School, this gorgeous family home perched on an a large elevated block is sure to impress. Bathed in natural light - starting in the separate formal lounge/Theatre room, Master suite with parent retreat, his & her robes separate WC. All the way through the large open kitchen, dining & living area. The hub of the home is the central kitchen with essa stone benchtops, 900mm electric oven, 5 burner gas cooktop, stainless steel range & dishwasher perfect for cooking up a storm while still being part of the family activities. large outdoor living area, sheltered for all year round use. Large rear garden perfect for kids and pets and large enough to accomodate a pool.

Master bedroom with parents retreat Split System A/C & Fan. Modern ensuite with separate W/C. His and Her robes.
Spacious family/dining with split reverse A/C. Shoppers entry and light neutral decor.
2 good sized minor bedrooms with built in robes & ceiling fans. Closed off laundry with Linen and 2nd WC.
2nd bathroom with large tub, separate shower in light neutral tones. Quality neutral carpets to bedrooms.
Plenty of windows bathing the home in natural light. Quality window treatments throughout.
Low maintenance garden beds with artificial lawn at the front. Alfresco and sheltered patio for entertaining.
Large easy care garden and lawn with plenty of room for a pool.

Large 560m2 block
150m2 living + Alfresco + garage
Built in 2012.

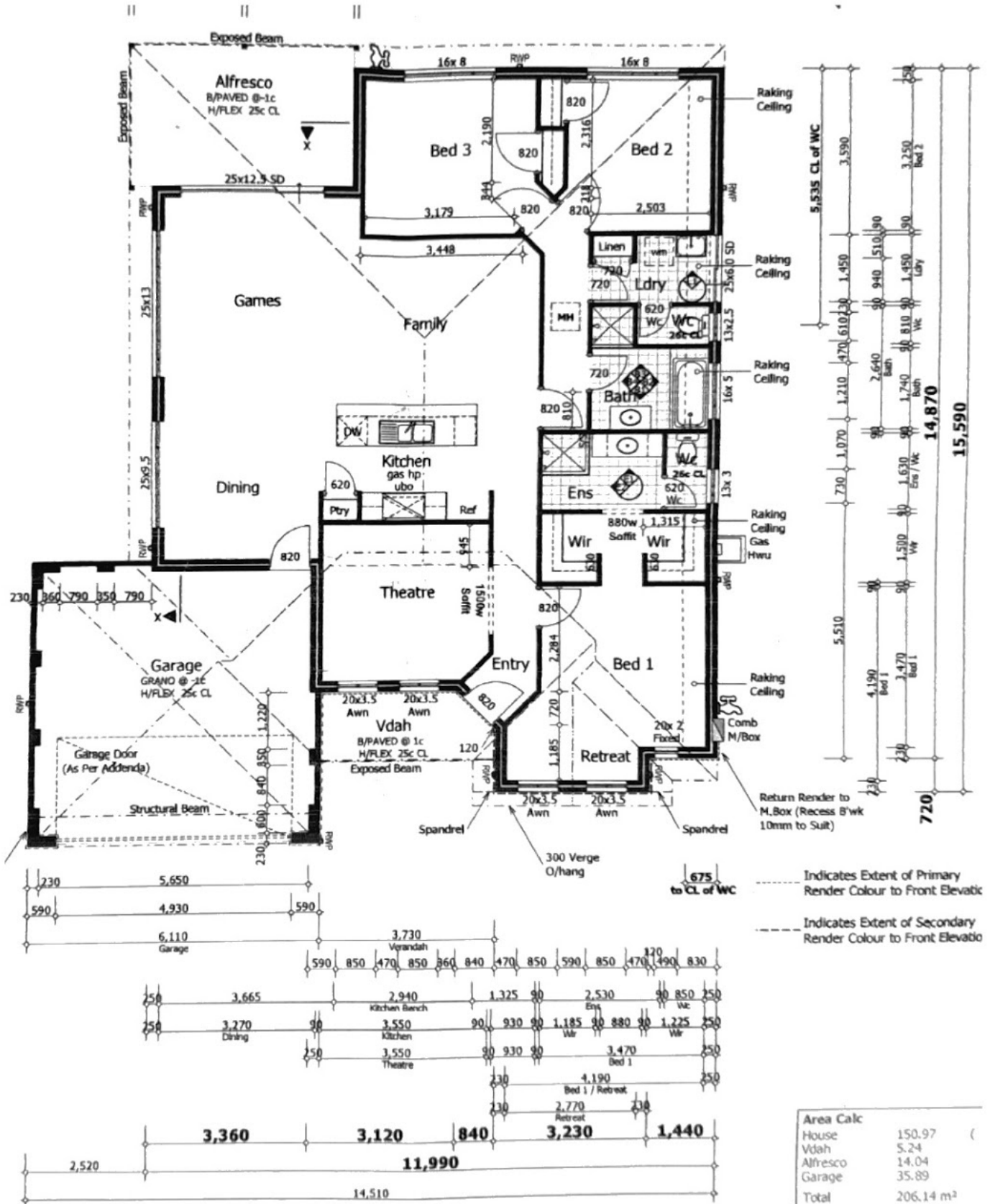
3 BED | 2 BATH | 2 CAR

PRICE:
\$337,000

OPEN FOR INSPECTION:
N/A



Liz Smith
0431926144
lizsmith@atrealty.com.au
www.atrealty.com.au



Disclaimer: Please note this floor plan is for marketing purposes and is to be used as a guide only. All dimensions are estimates only and may not be exact measurements.