



## FOR SALE

### BRAND NEW! LOW MAINTENANCE HOME IN A QUIET LOCATION!

These homes will appeal to empty nesters, first home buyers, investors or buyers wanting brand new low maintenance living. Currently in construction. These photos represent similar projects built from this quality conscious builder.

This craftsman builder is offering 3 brand new single storey homes. Units like this are often sold & rarely found. Approx. 18 Squares including garage, these superb homes are in a quiet no through road, set on their own titles and situated only minutes from Mountain gate shopping precinct and all major amenities.

Comprising spacious kitchen meals areas with breakfast bar, open plan to family room / lounge room with easy access to the outdoor alfresco / decking areas. Master bedrooms with full ensuites, generous bedrooms, walk-in & built in robes, separate family bathrooms & laundry, internal access via garage, remote garage doors, fully landscaped gardens, and full fenced yards.

Quality fixtures & fittings, 2.7m ceilings, decorative cornices, architraves & skirting, high set internal doors, engineered timber flooring to living areas, tiles to wet areas, carpet to bedrooms, stone bench tops, stainless steel appliances, reverse cycle heating and refrigerated cooling system, tiled roof, water tank, rear yard access and so much more. Hurry! First to inspect will buy!

Thinking of selling now or in the future? For a free market appraisal Call Lou 0417-166-668 / Leeanne 0404-261 469 or email [lou@atrealty.com.au](mailto:lou@atrealty.com.au)  
Statement of information will be available to inspect at the property.  
Inspection times and property availability are subject to change without notice. Photo identification required at inspections. Disclaimer. All information contained herein is gathered from sources we believe to be reliable. We cannot however guarantee its accuracy and interested parties should make and rely on their own inquiries.

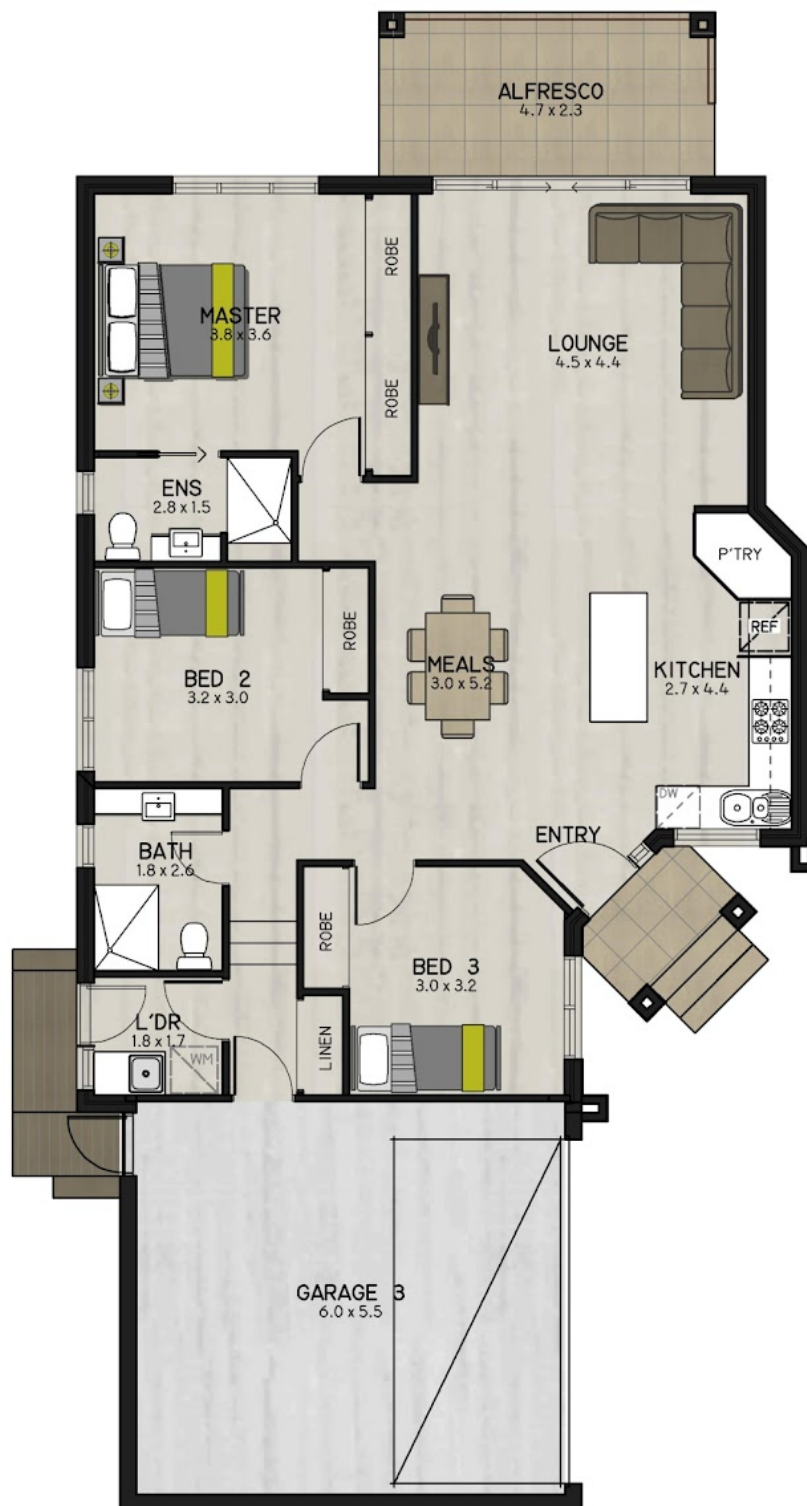
3 BED | 2 BATH | 2 CAR

PRICE:  
\$750,000

OPEN FOR INSPECTION:  
N/A



**Lou Rinnovasi**  
**0417166668**  
[lou@atrealty.com.au](mailto:lou@atrealty.com.au)  
[www.atrealty.com.au](http://www.atrealty.com.au)



|                  |                   |
|------------------|-------------------|
| GROUND FLOOR     | 119m <sup>2</sup> |
| GARAGE           | 36m <sup>2</sup>  |
| PORCH            | 3m <sup>2</sup>   |
| DECKING/ALFRESCO | 11m <sup>2</sup>  |

Disclaimer: Please note this floor plan is for marketing purposes and is to be used as a guide only. All dimensions are estimates only and may not be exact measurements.

OVERALL TOTAL 172m<sup>2</sup>