



FOR SALE

YOUR NEW SPACIOUS FAMILY HOME - CLOSE TO EVERYTHING

Perfectly situated close to schools, shops and multiple recreation facilities, this family home features 4 large bedrooms; 2 on the ground floor and 2 on the upper floor. Both the ground and upper level have family bathrooms with separate toilets, accommodating the whole family. With two generous living areas and additional study nook or sitting room near the staircase there is room to spread out! There is offstreet parking for up to four vehicles, plus a very secure level backyard ideal for children and/or pets.

Located within walking distance of Lindisfarne North Primary School, Australian Christian College and St Cuthbert's Catholic School. If sport is of interest, the Geilston Bay Tennis Club, Geilston Bay Boat Club, Football Oval, BMX track and recreational walking tracks are all literally on your doorstep. A short drive into Lindisfarne Village gives you access to various amenities and services; from Doctors Surgeries, Dentists, Hairdressers, Cafes, Supermarket, Motor yacht club, Bakeries and Bottleshop. Only 8 minutes drive to the Hobart CBD or the northern suburbs via Tasman and Bowen Bridges.

Four bedroom homes offering such amenity are a rarity in this price range, please contact Ben Palmer for any further information.

4 BED | 2 BATH | 1 CAR

PRICE:

Offers over \$495,000

OPEN FOR INSPECTION:

N/A



Ben Palmer

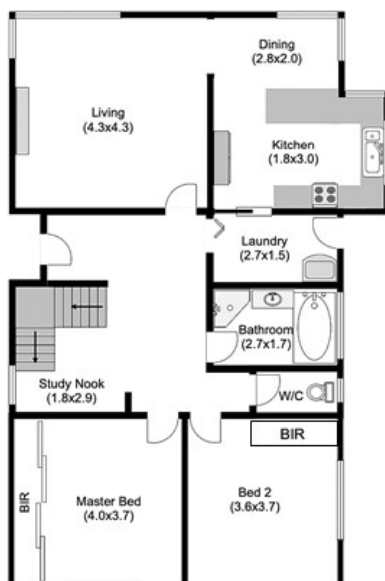
0417556731

benpalmer@atrealty.com.au

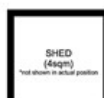
hobarthomes.com.au



GROUND FLOOR



UPPER FLOOR



Disclaimer: Please note this floor plan is for marketing purposes and is to be used as a guide only. All dimensions are estimates only and may not be exact measurements.