



SOLD

SOLD BY PEGGY LIU

Modern Home with Fantastic Return On 400 m2 Block!

Situated on a spacious 400 m2 block in a quiet neighborhood, this modern property is low maintenance, in excellent condition, and is perfectly located only minutes from transport, schools, shops and the Ipswich CBD.

This home is perfect for those looking for a secure investment! Conversely, if you are after your new family home, the tenant is on a month-to-month lease so you would be able to move in quickly.

Property features at a glance:

- Great investment return
- Four bedrooms, master with ensuite and WIR
- Built-in wardrobes and fans in all the bedrooms
- Open plan kitchen, living and dining areas, with second living space for the whole family
- Flows out to a spacious undercover alfresco area
- Air-conditioner in the living area and master bedroom
- Main bathroom with separate bath and shower
- Remote controlled garage
- Fully fenced backyard
- Spacious, low maintenance 400 m2 block

Location:

- 1 minutes to the local park
- 2 minutes drive to Leichhardt convenience stores
- 4 minutes walk to the local bus stop
- 5 minutes walk to Leichhardt State School
- 5 minutes drive to Wulkaraka Train Station
- 6 minutes drive to Ipswich Hospital
- 10 minutes drive to Riverlink Shopping Centre
- A short drive to RAAF Amberley Airbase

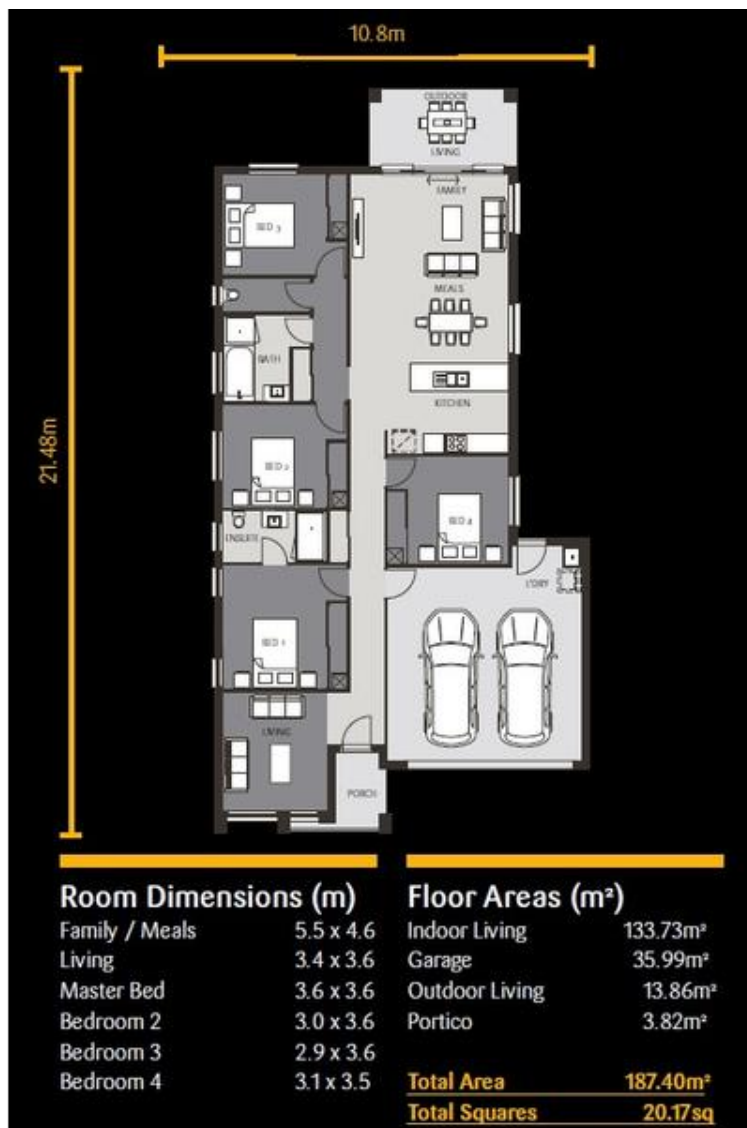
4 BED | 2 BATH | 2 CAR

PRICE:
\$300,000

OPEN FOR INSPECTION:
N/A



Peggy Liu
0404880777
peggy@atrealty.com.au
www.atrealty.com.au



Disclaimer: Please note this floor plan is for marketing purposes and is to be used as a guide only. All dimensions are estimates only and may not be exact measurements.