



# FOR SALE

## "CHEVIN WOODS" STUNNER!

### \*\*\* ALL REASONABLE OFFERS INVITED\*\*\*

A rare opportunity to secure number 19 Salicina Gardens has arisen, a 2176sqm parcel of almost flat land with a 4 bed/ 2 bath, 2007/08 Summit built home, made from sturdy brick & colorbond, and boasts the following attributes:

#### HOME FEATURES

- 2x split system air conditioners
- Block out blinds in open plan living area
- Garage with extra space for storage and high enough for 4x4
- LPG gas hot water storage
- Gas point in family room
- Beautiful Blackbutt Timber Flooring
- Coffered ceilings in entrance & family rooms.
- Kidney shaped salt water pool
- Home theatre - wired for rear sound
- Switchable L.E.D lighting throughout
- Kitchen features: Smeg oven & dishwasher, 900mm gas tops & range-hood, trendy pendant lighting & subway tiled splash-back.
- All bedrooms have robes & are generously sized.
- Master bedroom has walk-in robe, ensuite with corner bath, large shower, dual basins & separate toilet.
- NBN CONNECTED

#### OUTSIDE

Externally, it's one of the best positions available, an almost flat half acre, fully fenced with 130sqm of liquid limestone, huge lawn area, decked alfresco living with adjoining gabled Stratco Outback patio - feature lighting is a stand out as the sun falls.

- Living on the back of the school has many perks.
- Access to new Premium Grade basketball courts
  - Direct Access to school via gate
  - Plenty of bush to explore

4 BED | 2 BATH | 2 CAR

#### PRICE:

CONTACT AGENT

#### OPEN FOR INSPECTION:

N/A

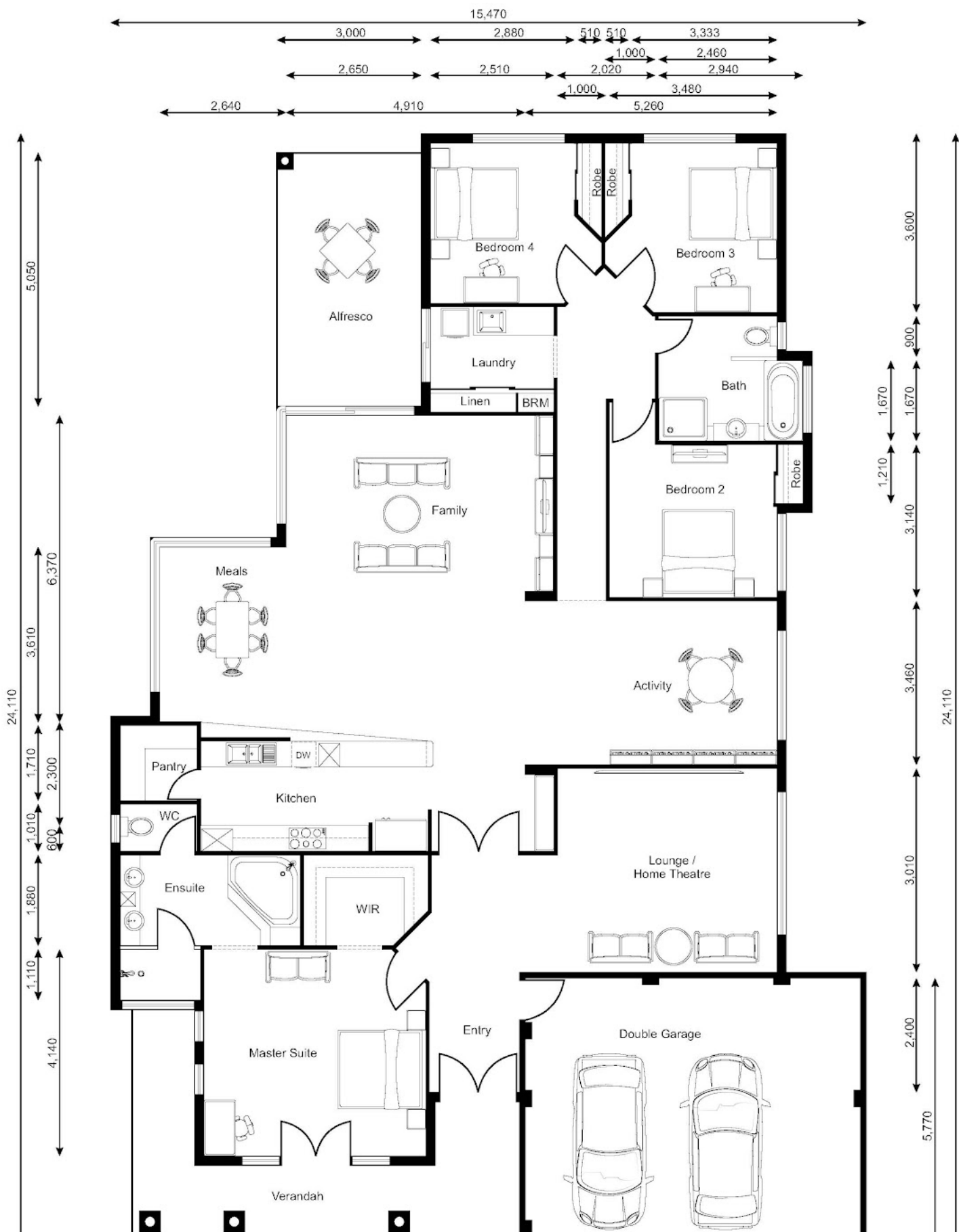


**Seroja Kasli**

**0404036333**

[seroja@atrealty.com.au](mailto:seroja@atrealty.com.au)

[www.atrealty.com.au](http://www.atrealty.com.au)



Disclaimer: Please note this floor plan is for marketing purposes and is to be used as a guide only. All dimensions are estimates only and may not be exact measurements.

