

**SOLD**

## NIMBINS HISTORIC HENSEN RUN

Nimbin's local award winning agent, Uri Ross proudly presents 5 Hensen Road, Nimbin, a priceless hidden gem. This property which boasts a great deal of history, known as Hensen's Run, was established in 1903, and remained in the hands of the Hensen family until it was sold in 1973.

Approximately 160 rolling acres of prime grazing land situated only 5 minutes from the village along a well-sealed road, in arguably one of Nimbin's most beautiful and picturesque valleys. Farming with 360 degree views, and non stop water is a great way to describe this piece of magic. Three dominant ridges spread across this property with two beautiful waterways running through the centre producing ample water which runs down from the Nightcap range, which changes through the seasons from a slow moving watercourse, to fast running water with cascades, not good enough? The entire eastern boundary is the Goolmangar creek (approx. 556m), a permanent source of pristine water filtering down from Sam's Gully further up the valley, with seasonal swimming holes and a pump and irrigation already in place.

Just up the short easily accessible hill from the front entrance gate the atmosphere is at once relaxing and peaceful. You will find 2 x 3 BDR council approved homes that are 92m apart. There are numerous sheds, from a large lockable shed with concrete floor, ample power outlets, numerous work benches and lots of storage shelving, a 4 bay shed with 3 bays open and the 4th bay converted into an office, even the old dairy bales and vat room, there will be a shed for you. There is a light filled art studio with a beautiful outlook and a caravan under an awning with paved area. Plenty of infrastructure to hold all your equipment and belongings with an excess of room to get creative. In addition the property has a very pleasing established garden, growing many citrus trees, macadamia nuts, mangos, guava, feijoa, tropical apple, mulberries, jaboticaba and dragon fruit, and there's a chook yard as well as raised vegetable beds. The beautiful old fig tree is glorious. 2 rainwater tanks holding 44,000 litres and 2 smaller tanks are in place.

The original timber farm house called "Hillview"(approx. 175sqm) has had some, but few modifications, such as an updated kitchen and bathroom and ceiling fans. There is a walk in closet and built in wardrobe. Part of the deck has been turned into a sleepout, though it still holds lots of its charming character with polished timber flooring, a wood heater, wainscoting panels on the walls, high ceilings and the traditional bullnose roof, and views from the wide verandas on 2 sides, which catch the morning winter sun. The original 2 room farm cottage was constructed from timbers milled on the property and still form part of the house today.

**6 BED | 3 BATH | 3 CAR**

**PRICE:**  
**\$1,500,000**

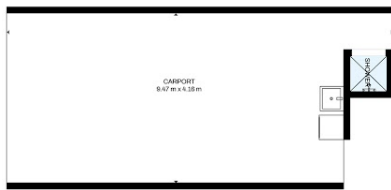
**OPEN FOR INSPECTION:**  
**N/A**



**Uri Ross**  
**0423280278**  
uri.ross@atrealty.com.au  
[www.atrealty.com.au](http://www.atrealty.com.au)

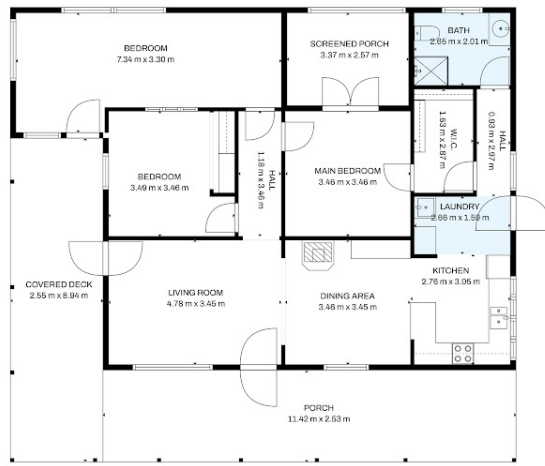


FLOOR 2



FLOOR 1

House 2



House 1



Studio + Carport