



SOLD

LOCATION LOCATION!!

You won't find a better street to live in, with the Springwood conservation park as your neighbour. The tranquil bush land backdrop makes it hard to believe you will also have the convenience of shops transport and schools all close by as you will feel a million miles away from the stresses of life when you are home.

The standout features;

Low set Brick and Tile home that is tidy as a pin

Great floor plan for families

Outdoor area and kitchen overlook the Forest Outlook

Two separate living areas

Spacious floor plan with potential to modernise to your tastes.

Low maintenance established gardens on a 676m2 block

An inspection is a must if you are looking for a reasonably priced home in a prime location that you can add value too, you need to view this one asap as we don't expect it to last long on the market.

Walking distance to Springwood State High and Calvary Christian College , playground, bush walking and bus. A short drive to shopping centres , Springwood CBD and the M1 that gives you easy access to Universities, train stations and the Brisbane CBD.

4 BED | 2 BATH | 2 CAR

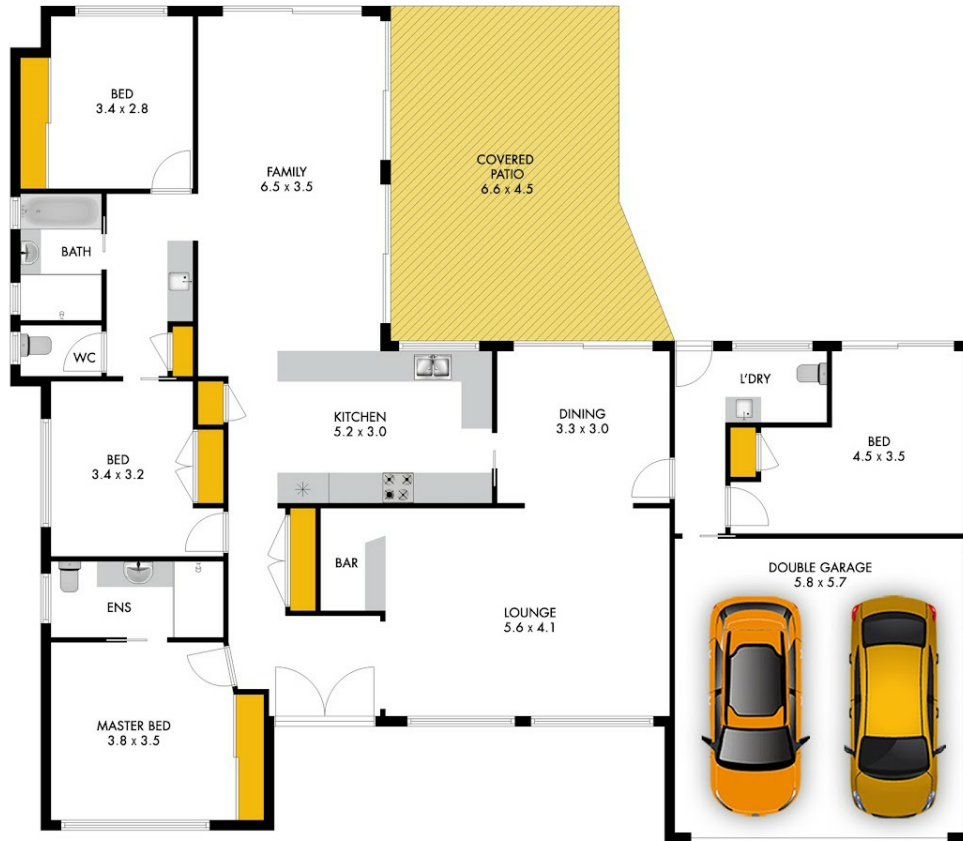
PRICE:
\$580,000

OPEN FOR INSPECTION:
N/A



Leanne Smith
0428750122
leannesmithproperty@atrealty.com.au
www.atrealty.com.au

57 PLATEAU DRIVE, SPRINGWOOD, QLD 4127
APPROX. FLOOR PLAN AREA IS 229M²



ALL MEASUREMENTS SHOWN OR IMPLIED ARE APPROXIMATE AND NO RESPONSIBILITY IS TAKEN FOR ANY ERROR, OR OMISSION, NOR IS ANY WARRANTY GIVEN. THESE PLANS ARE FOR ILLUSTRATIVE PURPOSES ONLY AND SHOULD BE USED SUCH. COPYRIGHT 2017. ALL RIGHTS RESERVED BY ABSTRACTVIEW.COM.AU

Disclaimer: Please note this floor plan is for marketing purposes and is to be used as a guide only. All dimensions are estimates only and may not be exact measurements.