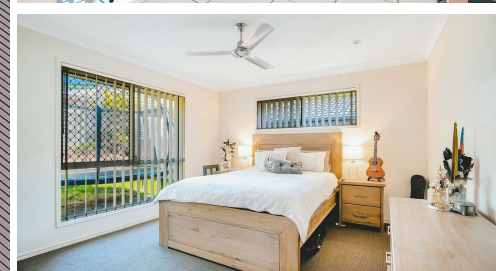
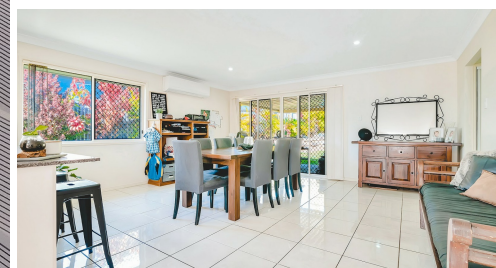


13 JOHN CRESCENT, PIMPAMA, QLD, 4209



FOR SALE

NEST OR INVEST

Brilliant family home found on a fantastic Pimpama street.

This is a very tidy well kept property found on a 574m² block. Comes with a separate living room / lounge in the front of the house, large open plan dining and kitchen, stone bench-tops and quality stainless steel appliances, Master bedroom has a walk through wardrobe to the en-suite, 3 good sized supporting bedrooms all with walk in robes, separate toilet, shower and bath tub in the main bathroom, ceiling fans throughout, air conditioned living room, covered out door area...

Apart from being located on one of the best Pimpama streets its also walking distance to schools, shops and a number of speciality stores. 13 John Cres Pimpama should be on your list of property to inspect.

Contact the listing agent today to receive your personalised property information kit.

4 BED | 2 BATH | 2 CAR

PRICE:
\$495,000

OPEN FOR INSPECTION:
N/A



Scott Stonnell
0412224557
s.stonnell@atrealty.com.au
www.atrealty.com.au