



FOR SALE

“SANDY CREEK PARK” ACREAGE LIFESTYLE

GORDONVALE

A magnificent elevated acreage property with superb 300-degree mountain and valley views to Bellenden Ker, Gordonvale, Edmonton and Cairns. Situated on 10.65 Ha (26.31 acres). Located on the outskirts of Gordonvale in Far North Queensland only 25 mins drive to Cairns. Gray's Peak National Park offers a stunning back drop with Sandy Creek running at the back of the property, almost all year round.

The beautiful home is situated on the top of the elevated block, capturing views out to the surrounding towns mountains, cane fields and horse paddocks. Offering a family looking for the best of both worlds, the conveniences of living just minutes from the amenities of Gordonvale and Cairns with the rural lifestyle so many are searching for.

From the front of the home you are welcomed with a front veranda, where you can enjoy a cup of tea in the morning as the sun rises behind you or watch the sun set in the evening casting brilliant colours across the skies.

Entering the home you step inside an open plan living room, kitchenette and office, a unique design, allowing 2 separate living areas.

A modern near new spacious kitchen with loads of bench space, branching off to the dining room and lounge. The kitchen has some of the top leading appliances installed all less than 2 years ago.

The master suite is privately tucked away from the other 3 bedrooms. It has its own walk in robe and ensuite, with a second door opening onto a private patio. Imagine laying in bed enjoying the amazing views.

There are 3 spacious bedrooms are situated at the other side of the home, with another kitchenette, family room, 2nd bathroom and separate toilet. This is great for a kids retreat, AIR BnB, a second family or privacy for guests when visiting.

The current owners are great lovers of horses and have built a successful horse agistment business, potential earning approx. \$52,000 pa. The 16 electric fenced horse paddocks were planted with tropical grass seeds providing lush feed for horses.

4 BED | 2 BATH | 3 CAR

PRICE:
1,299,000

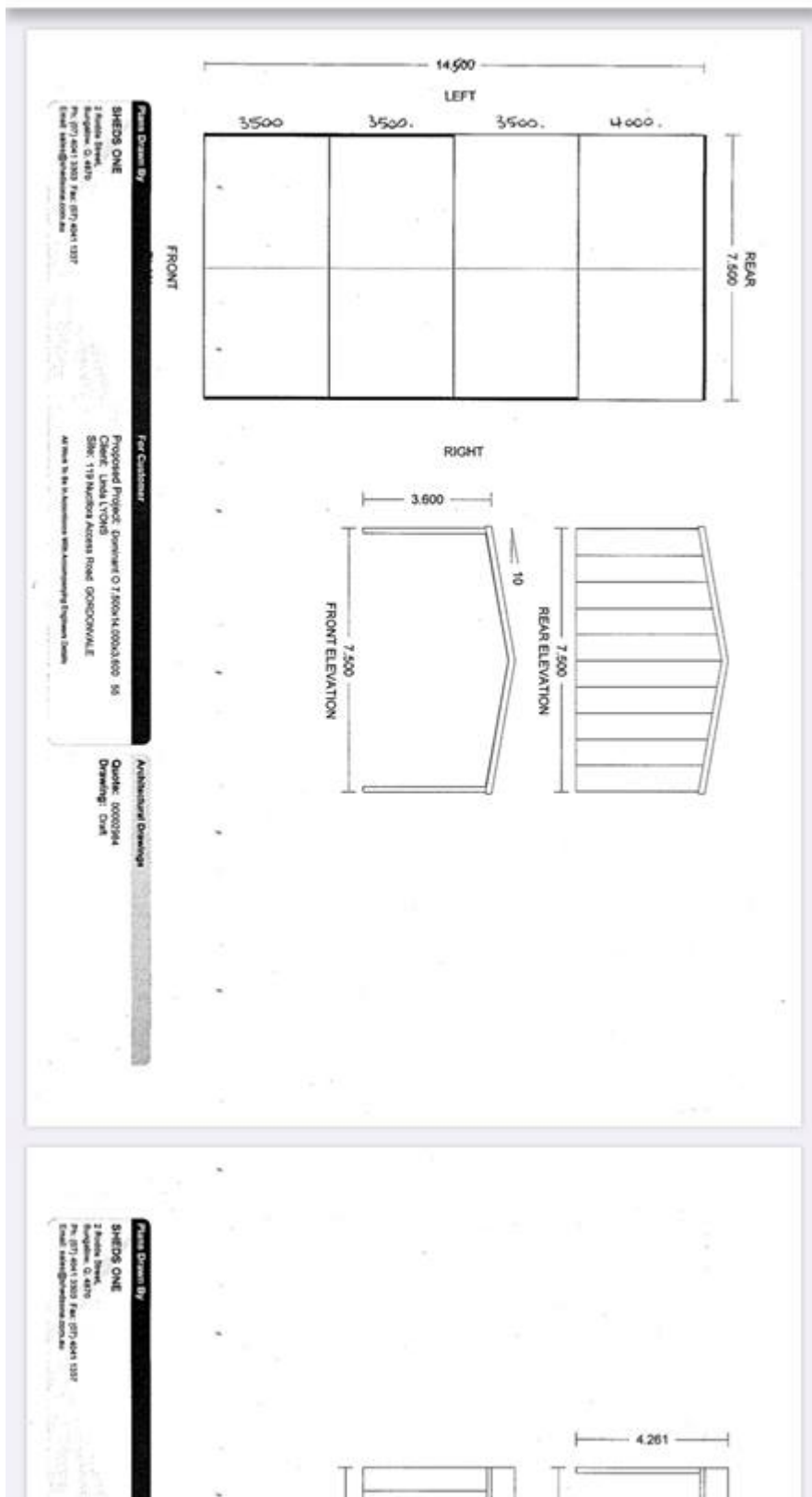
OPEN FOR INSPECTION:
N/A



Fiona Green
0428875804
fionagreen@atrealty.com.au
www.atrealty.com.au



201611291448.pdf



Disclaimer: Please note this floor plan is for marketing purposes and is to be used as a guide only. All dimensions are estimates only and may not be exact measurements.