



FOR SALE

EXCELLENT OPPORTUNITY IN PRIME LOCATION

Completely Refurbished spacious Unit on top floor. The owners have updated this unit from head to tow , with brand new kitchen featuring all new appliances including Dishwasher and soft closing cupboard doors, new timber floors in dinning and kitchen area and a brand new Bathroom, separate shower, and separate Bath ,new tiles, and vanity unit . All lighting has been updated with LED efficient lighting, plus new fans, and unit has been completely repainted throughout.

Spacious Bedrooms with full length wardrobes, all new blinds and ceiling fans plus linen press in hallway, A full length balcony capturing the cool north east breezes. Two car tandem lockup is a big plus .

Positioned in a prime location , overlooking the new Coorparoo square ,cinemas, restaurants , Aldi Woolworths and Coles shopping areas plus bus stop only 20 meters away.

There is nothing to spend on this unit ,as its all been done! and is an excellent first home or investors special

Body corp details Admin fun \$1,759.00 half yearly Sinking fund \$1,126.00 half yearly BCC rates \$499.25 Qt

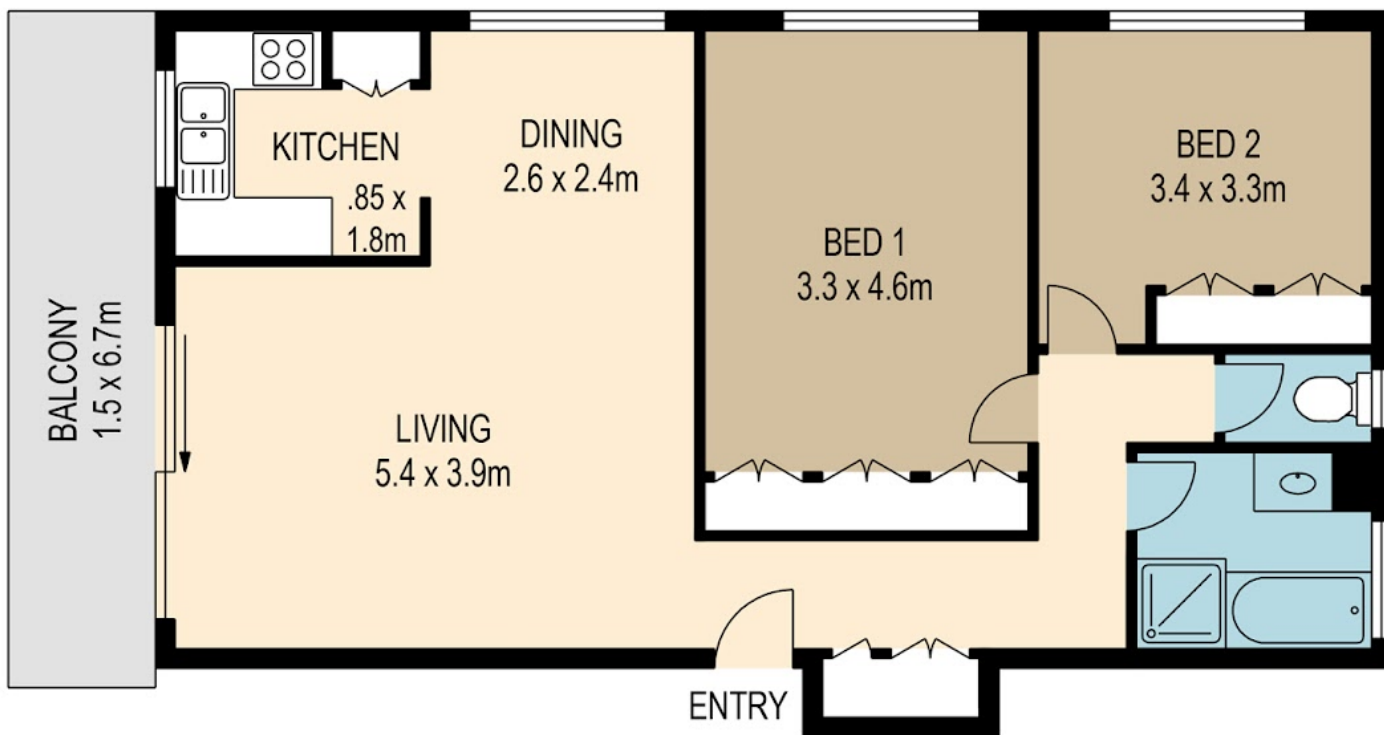
2 BED | 1 BATH | 2 CAR

PRICE:
\$379,000

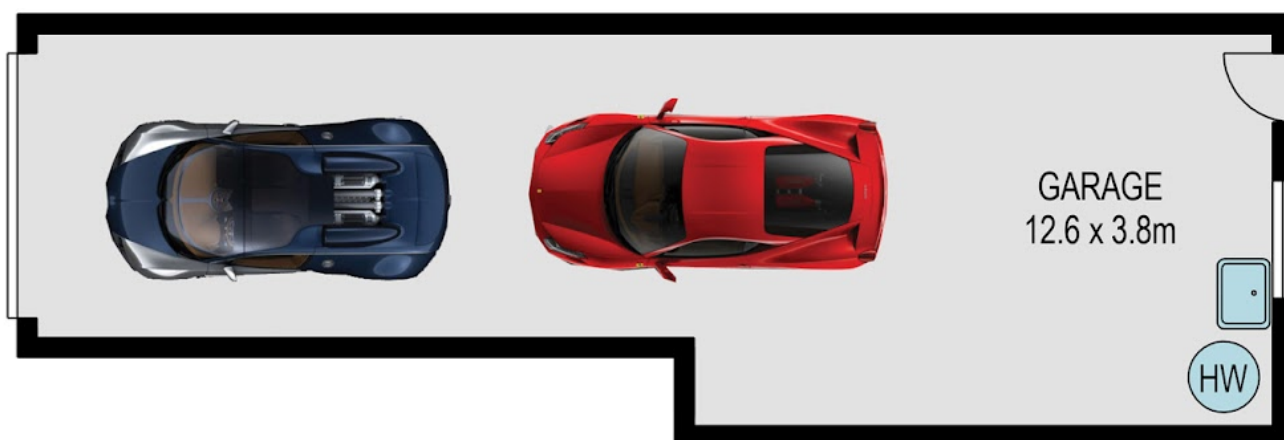
OPEN FOR INSPECTION:
N/A



Tony UGRINIC
0418740823
tony@atrealty.com.au
www.atrealty.com.au



UPPER LEVEL



LOWER LEVEL



SCALE (METRES)

PLANS SHOWN ONLY INDICATIVE OF LAYOUT. DIMENSIONS ARE APPROXIMATE.

All information contained herein is gathered from sources we believe to be reliable.

However, we cannot guarantee its accuracy and interested persons should rely on their own enquiries.

| | internal | external |
|-------|----------|----------|
| lower | 42sqm | |
| upper | 79sqm | 10sqm |
| total | 121sqm | 10sqm |



Disclaimer: Please note this floor plan is for marketing purposes and is to be used as a guide only. All dimensions are estimates only and may not be exact measurements.

www.realscope.com.au