



SOLD

STOP YOUR SEARCH THIS IS THE ONE

Nestled on 809m2 this 1938 Period home has all the charm one loves including hardwood floors stunning high ornate ceilings throughout. The formal entrance flows onto the light-filled lounge room through the original windows complete with fireplace and reverse cycle air-conditioning. The elegant kitchen is light-filled and breezy and captures the distant hills through the very practical louver gallery windows. Complete with wide granite benchtops and clever draws and storage space and equipped with quality appliances.

The spacious dining room opens onto the huge side sunroom through french doors and would easily accommodate a fourth bedroom.

There are three bedrooms the stunning oversized master bedroom opens onto its private sunroom through French doors with its own Juliette balcony and lovely original leadlight windows. All three bedrooms have excellent storage with good sized built-in wardrobes. A light-filled good-sized functional bathroom with a separate bath and shower and separate toilet. Internal stairs lead down to the lower level that has its own bathroom and kitchenette. and would be perfect for a child's rumpus room or personal home office.

This multi-purpose space flows onto the outdoor entertaining area through the large glass doors perfect space for entertaining or enjoying the private gardens.

Extra Features Include

Solar Hot Water

Fans

2x Water Tanks

Fully Insulated

Garden Shed

Garden Pagola

Storage Space and Lock Up Garage with a separate carport and extra driveway parking.

The convenience and lifestyle will embrace you immediately, you won't buy a better home and location in East Lismore.

Phone to secure your private inspection.

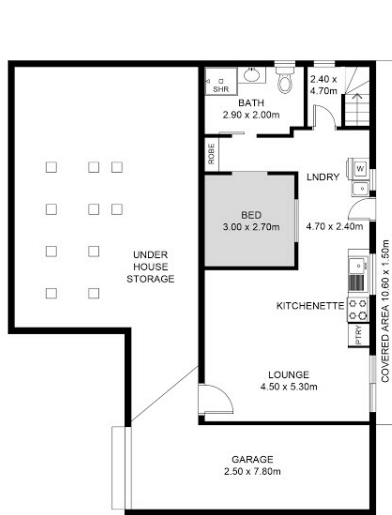
4 BED | 2 BATH | 2 CAR

PRICE:
\$555,000

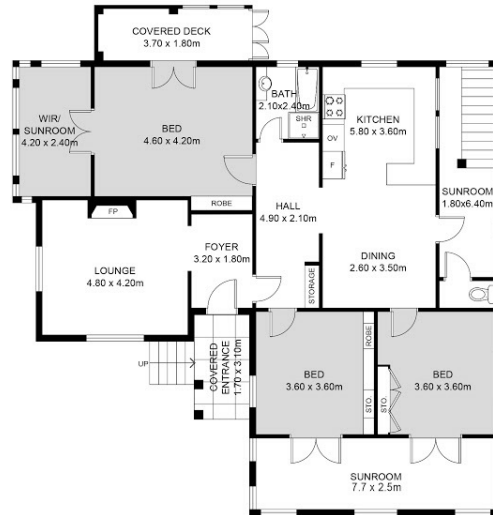
OPEN FOR INSPECTION:
N/A



Peta Thompson
0403123115
petathompson@atrealty.com.au
www.atrealty.com.au



DOWNSTAIRS FLOOR PLAN



UPSTAIRS FLOOR PLAN

This floor plan including furniture, fixture measurements and dimensions are approximate and for illustrative purposes only. Boxbrownie.com gives no guarantee, warranty or representation as to the accuracy and layout. All enquiries must be directed to the agent, vendor or party representing this floor plan.



65 Spring Street, East Lismore

Disclaimer: Please note this floor plan is for marketing purposes and is to be used as a guide only. All dimensions are estimates only and may not be exact measurements.