



# FOR SALE

## CENTRAL ALBURY FLATS / REDEVELOPMENT SITE

For Sale Now OR By Auction, Saturday 26th May at 1.00pm ONSITE  
1,2,3,4,5,6 & 7 / 693 Holmwood Cross, Albury NSW 2640

### Central Albury Flats / Redevelopment Site

This block of seven dwellings on one title are perfectly located only 50 metres from the Albury TAFE Campus and 1.6 km walk to Albury CBD and services. Tenants are attracted by the central Albury location

- The property consists of 6 bedsitters and a detached spacious two bedroom home
- Currently the property is returning a gross income of \$41,340.00 with room for improvement
- Developers take note of the 1756 m2 block suitable for subdivision subject to council approval

8 BED | 7 BATH | 7 CAR

### PRICE:

Contact Agent

### OPEN FOR INSPECTION:

N/A

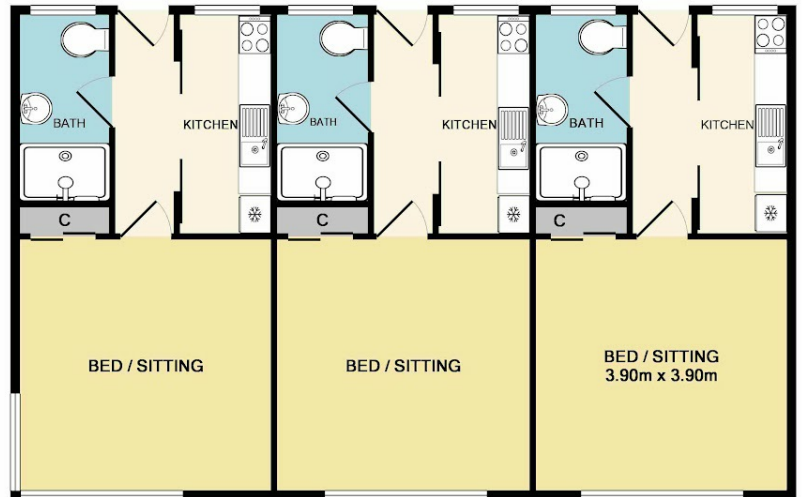
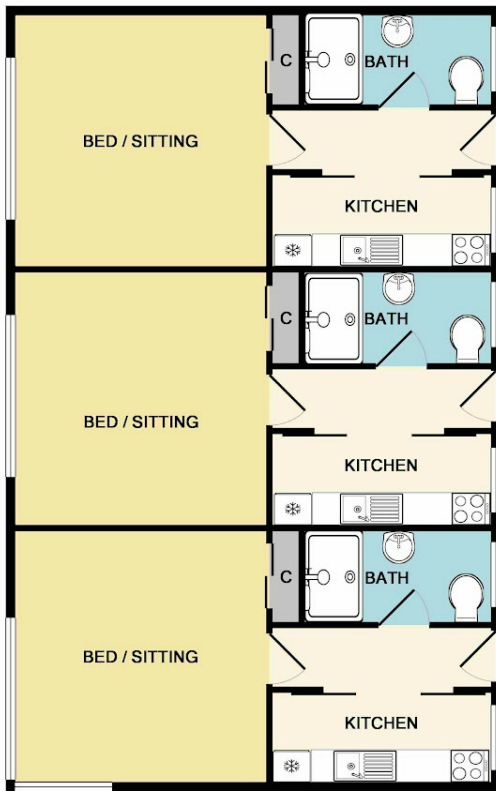


**George Bourdis**

**0412291974**

[george.bourdis@atrealty.com.au](mailto:george.bourdis@atrealty.com.au)

[www.georgebourdisrealestate.com.au](http://www.georgebourdisrealestate.com.au)



Measurements are approximate. Not to scale. Illustrative purposes only

Disclaimer: Please note this floor plan is for marketing purposes and is to be used as a guide only. All dimensions are estimates only and may not be exact measurements.