



**SOLD**

## DESIRABLE LOCATION - THREE BEDROOMS PLUS LARGE MULTIPURPOSE ROOM WITH ADJOINING BATHROOM

Positioned on a quiet street in a family friendly neighbourhood this immaculately presented three bedroom plus multi purpose room home exudes charm and is waiting for you to make it yours.

The split-level home showcases gorgeous wooden floors throughout, an open plan design and boasts a well-appointed kitchen with white stone bench tops, gas cook top, dishwasher, and an abundance of storage.

Bi-fold doors stretch across the length of the living area and open out onto a large undercover deck. This is the perfect place for family and friends to gather for a drink and grazing platter whilst enjoying uninterrupted views of the expansive fully fenced back yard.

On the upper level sits three substantial bedrooms all with plantation shutters, ceiling fans and built in wardrobes.

The lower level offers a fully lined and beautifully presented multi-function room complete with an adjoining ensuite.

Features include:

- Large open plan kitchen/living/dining room
- Functional kitchen with gas cook top and dishwasher
- Bi-Fold Doors
- 3 Bedrooms plus multifunction room
- Polished timber floors throughout
- Plantation shutters
- Air conditioning to living and master bedroom
- Utility room with ensuite downstairs
- Front and rear decks
- Expansive and level fully fenced back yard
- Remote Double lock up garage

**3 BED | 2 BATH | 2 CAR**

**PRICE:**  
\$864,000

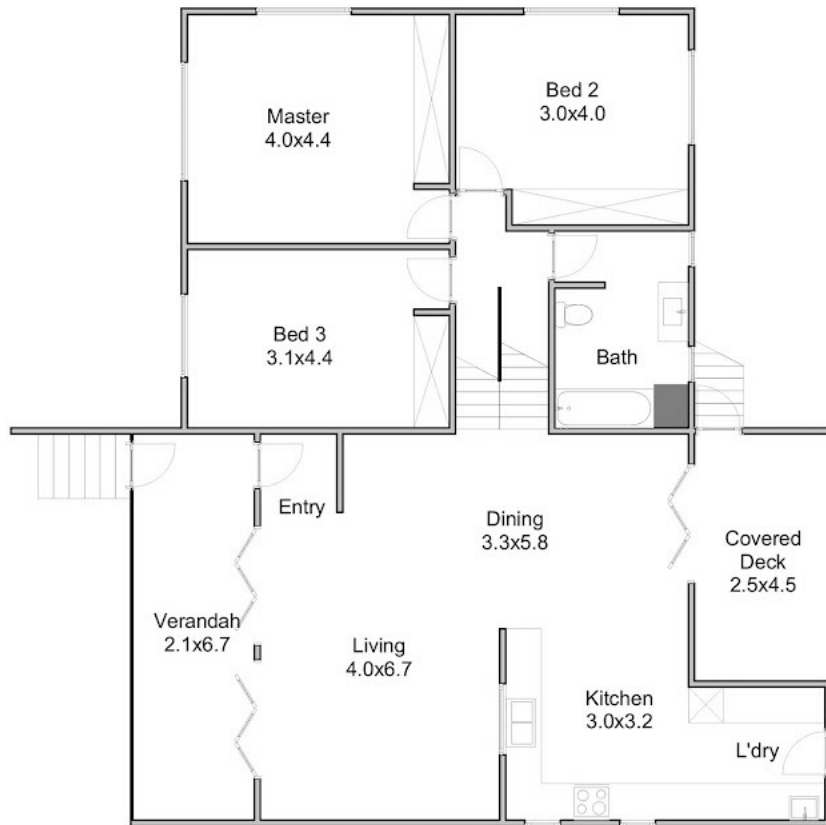
**OPEN FOR INSPECTION:**  
N/A



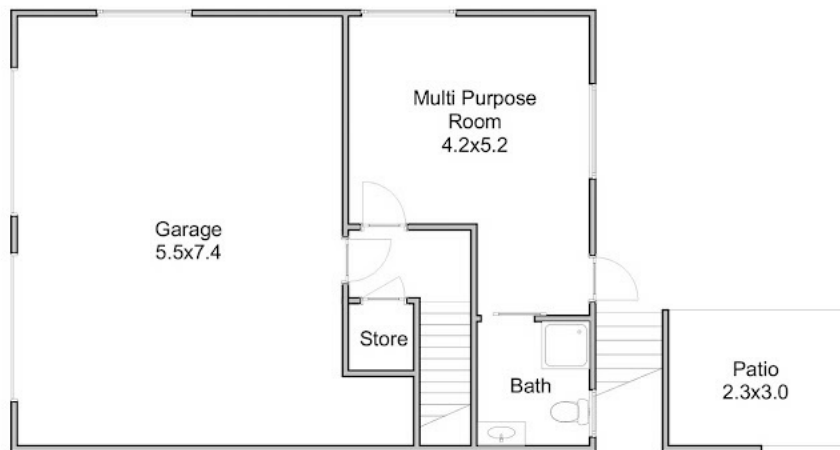
**Helana Kuhl**  
**0447522643**  
helana@atrealty.com.au  
[www.atrealty.com.au](http://www.atrealty.com.au)

# 9 Nearco st

4 Bed | 2 Bath | 2 Car



Upper Floor



Lower Floor



Disclaimer: Please note this floor plan is for marketing purposes and is to be used as a guide only. All dimensions are estimates only and may not be exact measurements.

MOUNTFORT

Internal 201.9m<sup>2</sup>

External 17.3m<sup>2</sup>

Total 219.2m<sup>2</sup>

Helana Kuhl  
0447522643  
helana@atrealty.com.au  
www.atrealty.com.au

Please note this floor plan is for marketing purposes only. Dimensions and layout are approximate. Mountfort Media gives no guarantee or warranty over the accuracy of this plan, interested parties should make their own enquiries.

