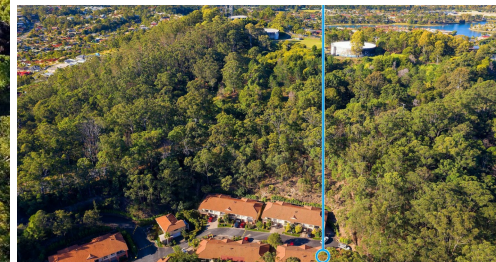




11/232 Guineas Creek Road



FOR SALE

SOLD BY AUDREY GOETZ

Ideally located at the end of the complex in Beachwood Villas, this spacious three bedroom townhouse offers a serene and peaceful outlook onto the natural bush land and Kimmulu Reserve from the spacious open plan kitchen/ dining and living area. Fresh air and nature abounds at your back door and off the balcony! The main living areas, en suited master bedroom and garage are all on the ground level offering privacy to the extra 2 bedrooms and main bathroom downstairs, ideal for guests, family or extra tenants with a courtyard and the lush bush outlook.

This peaceful, private, quiet location is within minutes to the beautiful Currumbin Beach and Creek, The Pines Shopping Centre, popular schools and cafes of Palm Beach and Currumbin, Coolangatta Airport and the motorway.

An inspection is a must to appreciate. View by appointment or at scheduled open home times or via our virtual tour & floor plan link here. Make an offer, will not last.

Ground Level

- * Spacious open plan living, dining and kitchen.
- * Private balcony overlooking the Reserve.
- * Spacious master with walk in robe and 2 way bathroom/ ensuite.
- * Single lock up garage with auto remote, internal access and attic ladder to access the ceiling area.

Downstairs

- * 2 generous bedrooms with built in robes.
- * Spacious main bathroom with bath.
- * Separate laundry.
- * Undercover area overlooking the grassed area and the adjoining bush land Reserve.

Beachwood Villas is a well managed and maintained complex with 41 townhouses. The facilities include a large fenced in-ground pool, covered BBQ and cabana area. Pet friendly complex.

Outgoings:

- * Water rates – approx. \$364 per quarter
- * Council rates – approx. \$771.52 per 6 months
- * Body corporate – \$110 per week

3 BED | 2 BATH | 1 CAR

PRICE:

Offers over \$370,000

OPEN FOR INSPECTION:

N/A



Audrey Goetz

0412148078

audrey@atrealty.com.au

www.atrealty.com.au

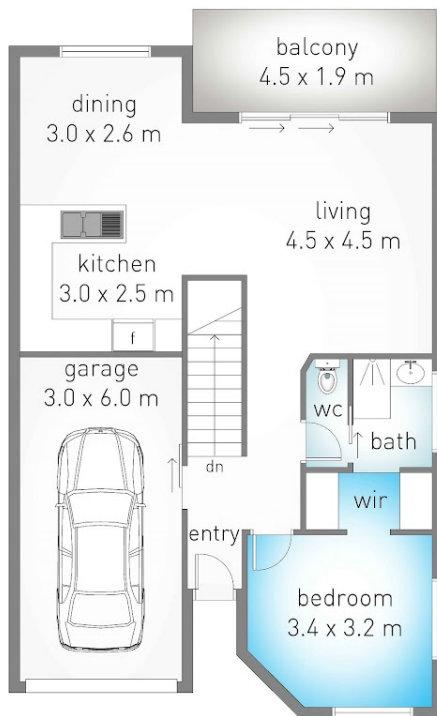
11/232 Guineas Creek Road, Elanora

3 2 1

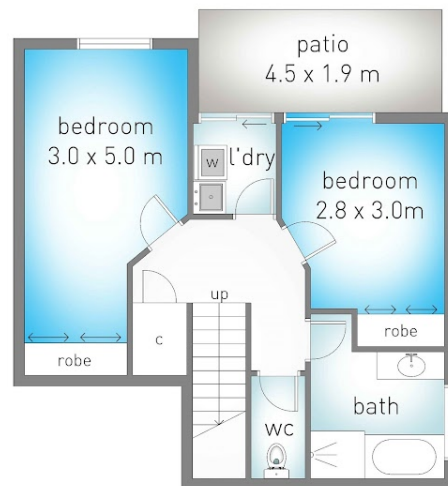
internal: 108.2 m² | external: 36.4 m² | total: 144.6 m²

@realty

Audrey Goetz 0412 148 078



upper (street) level



lower level



Dimensions are approximate. All information contained herein is gathered from sources we believe to be reliable. However we cannot guarantee its accuracy and interested persons should rely on their own enquiries.

Disclaimer: Please note this floor plan is for marketing purposes and is to be used as a guide only. All dimensions are estimates only and may not be exact measurements.