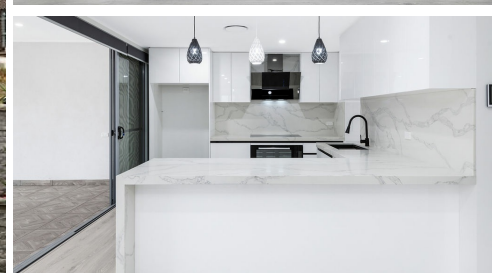
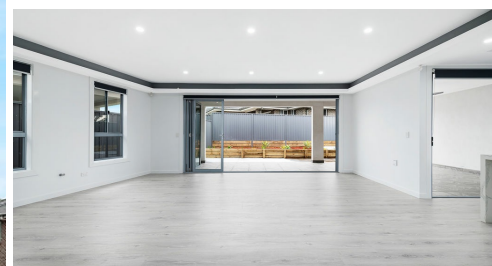


# 30 POULTON TERRACE CAMPBELLTOWN



## FOR SALE

### STYLE, ELEGANCE & SOPHISTICATION IN MACARTHUR HEIGHTS

It's not often a home with this level of sophistication and elegance presents itself. Personally designed with all the luxurious inclusions that can be adorned at every turn. The quality in the homes design is evident as soon as you enter and is spread over an impressive, grand two story floorplan tailored to suit a family looking for a home that encompasses modern comfort with practicality layered tastefully with vibrant aesthetics.

#### Features Include:

- Boasting four master suites all with walk in robes & ensuites
- The parents room includes access to the balcony that overlooks the lush greenery
- Study located on the lower level
- Multiple living areas conveniently located on both levels with built in cabinetry
- Stunning kitchen with ample cupboard & bench space
- Stone waterfall bench tops
- Stone splashback
- Soft closing cupboards
- Butlers pantry equipped with an oven, sink & microwave
- Breakfast bar overlooking the meals area
- Powder room on entry level
- Internal laundry is equipped with cupboard space & ironing board
- High ceilings
- Ducted air conditioning
- Ducted vacuum
- Video intercom
- LED downlights
- Internal storage located throughout
- Bifold doors open up to allow indoor/outdoor living
- Undercover alfresco with ceiling fan
- Low maintenance backyard
- Manicured gardens to front & back
- Double garage with remote & internal access
- Side access
- 408sqm block

4 BED | 4 BATH | 2 CAR

#### PRICE:

\$949,000 - \$979,000

#### OPEN FOR INSPECTION:

N/A

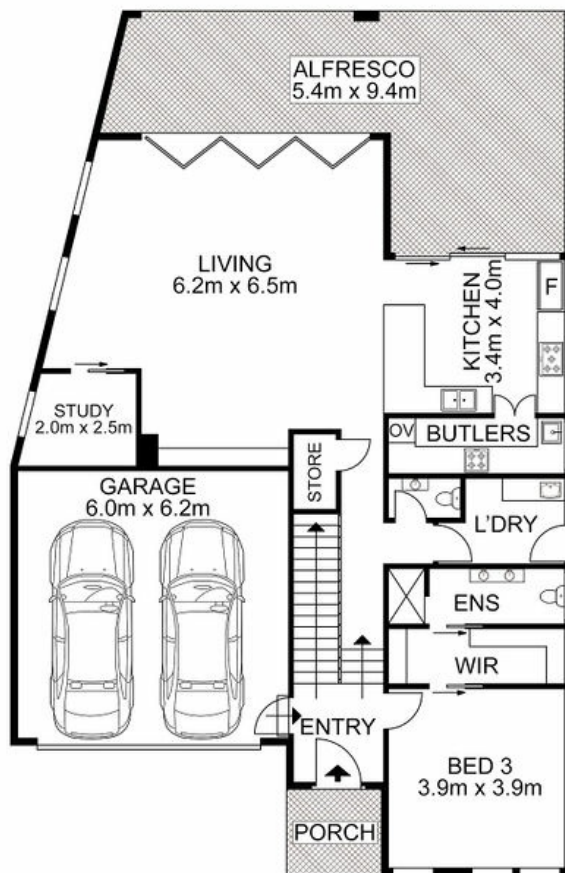


**Huss Al Salemi**

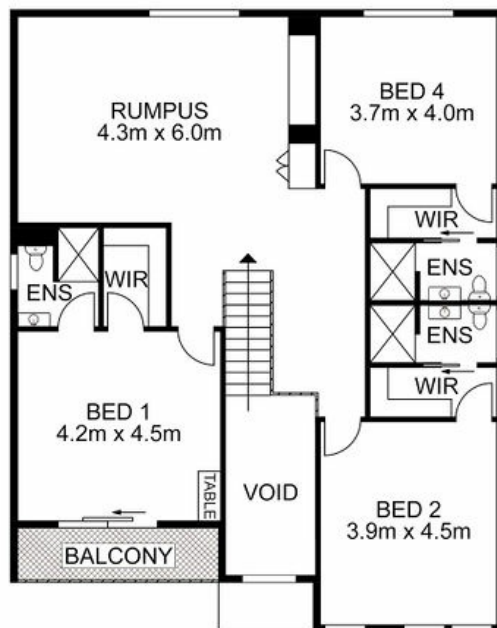
**0411699419**

[huss@atrealty.com.au](mailto:huss@atrealty.com.au)

[www.agencycentral.com.au](http://www.agencycentral.com.au)



ENTRY LEVEL



UPPER LEVEL



Disclaimer: Please note this floor plan is for marketing purposes and is to be used as a guide only. All dimensions are estimates only and may not be exact measurements.

30 Poulton Terrace, Campbelltown

Huss Al Salemi • All measurements are approximate • Drawn for marketing purposes only

0411699419

huss@atrealty.com.au

[www.agencycentral.com.au](http://www.agencycentral.com.au)

