



# FOR SALE

## ONLY 300M TO THE BREAKING WAVES...

Capturing the views, sounds and smell of the sea together with a cool afternoon breeze, this conveniently located beachside townhouse won't last long.

This lovingly maintained 2 bedroom property would be perfect for the first home buyer, investors or active retirees.

Upstairs features open living areas and a magic ocean view, particularly from the updated, modern kitchen and the covered east facing balcony.

On the middle level there are 2 bedrooms, the main with a large built in robe and family bathroom. The lower level has an inviting entry way and a second bathroom (shower and toilet), single lockup garage and separate large storage area.

Located a short 300m walk from Swimming Creek Beach, the home offers the opportunity to live the coastal lifestyle at an affordable price.

More to know ;

- New floating timber flooring
- Dishwasher and modern appliances
- Solid brick and tile construction
- Eastern side of town locale.
- Situated in a small complex of 5.

Call Craig or Narelle for you private inspection.

NOTE: we are a local Nambucca Valley Real Estate that has its Head Office on the Gold Coast.

We make no representation or warranty as the accuracy, reliability or completeness of the information relating to the property. Some information has been obtained from third parties and has not been independently verified.

Accordingly, no warranty, representation or undertaking, whether express or implied, is made and no responsibility is accepted by us as to the accuracy of any part of this, or any further information supplied by or on behalf our behalf, whether orally or in writing.

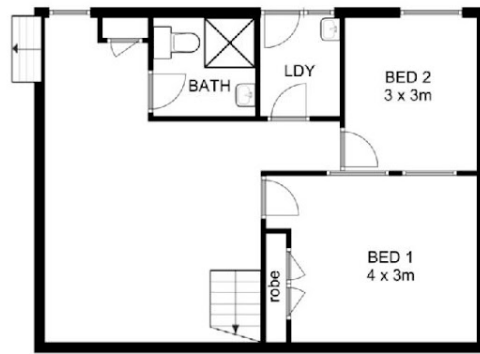
2 BED | 2 BATH | 1 CAR

PRICE:  
\$380,000

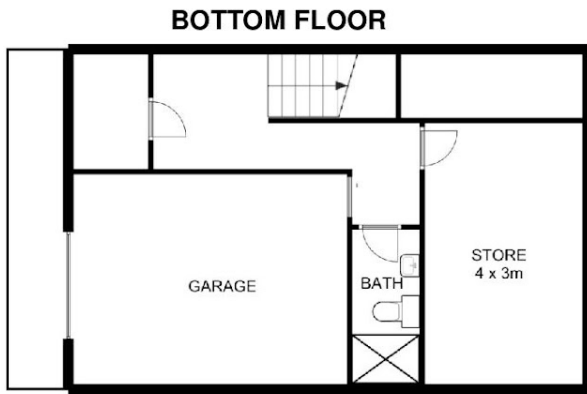
OPEN FOR INSPECTION:  
N/A



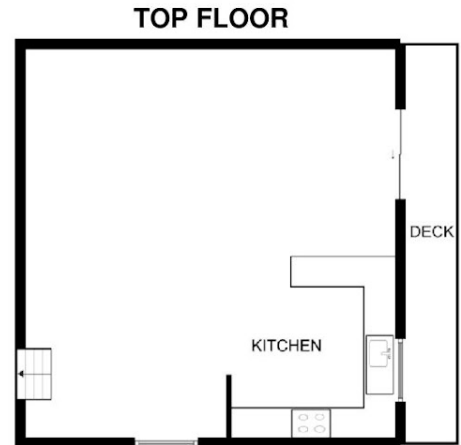
**Craig Bellamy**  
0412080287  
craigbellamy@atrealty.com.au  
[www.atrealty.com.au](http://www.atrealty.com.au)



MIDDLE FLOOR



BOTTOM FLOOR



TOP FLOOR

INT: 168 sqm  
EXT: 7 sqm  
TOTAL: 175 sqm

5/5 BEMAGO STREET, NAMBUCCA HEADS

This floor plan is not to scale. Areas and dimensions are approximate and therefore plan should only be used for illustrative purposes.

Disclaimer: Please note this floor plan is for marketing purposes and is to be used as a guide only. All dimensions are estimates only and may not be exact measurements.