



**SOLD**

## NEW PRICE ON THIS LARGE FAMILY HOME

- \* 543sqm block with approx 197sqm of internal living space.
- \* King size master bedroom suite has his & hers walk in robes and a modern en-suite
- \* Spacious theatre/lounge room with double doors and feature TV recess.
- \* Open plan casual living area comprising meals and family areas, feature TV recess
- \* Well appointed kitchen with heaps of bench space and cupboards galore, 900mm gas cook-top, double fridge/freezer recess.
- \* Three further queen -sized minor bedrooms with with built in robes
- \* Family bathroom, separate toilet and practical laundry room
- \* Large alfresco area overlooking the garden, extended paving and the lawns and garden beds are reticulated from mains water.
- \* Garden shed, double remote garage and side access to the rear yard.
- \* Ducted air conditioning throughout, gas hot water system
- \* Quality floor coverings and skirting boards throughout
- \* Extra power points to main living areas
- \* Security fly-screens to front door and alfresco sliding door

4 BED | 2 BATH | 2 CAR

PRICE:  
\$420,000

OPEN FOR INSPECTION:  
N/A



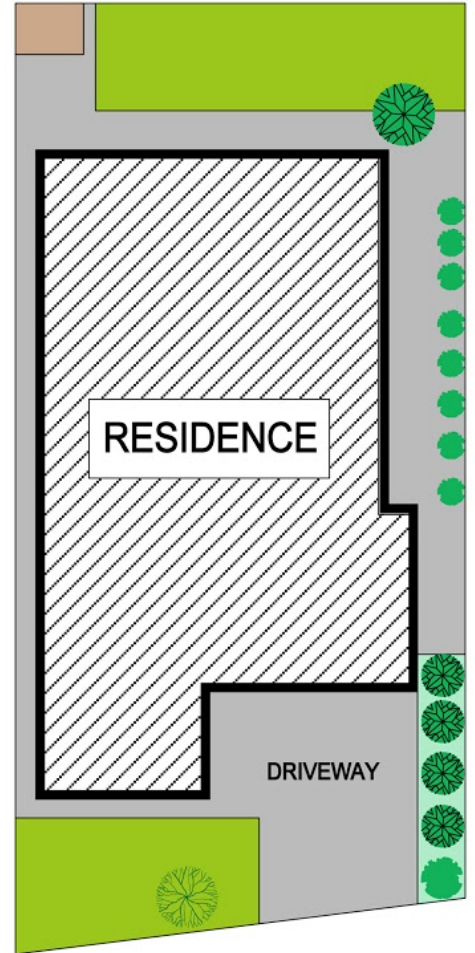
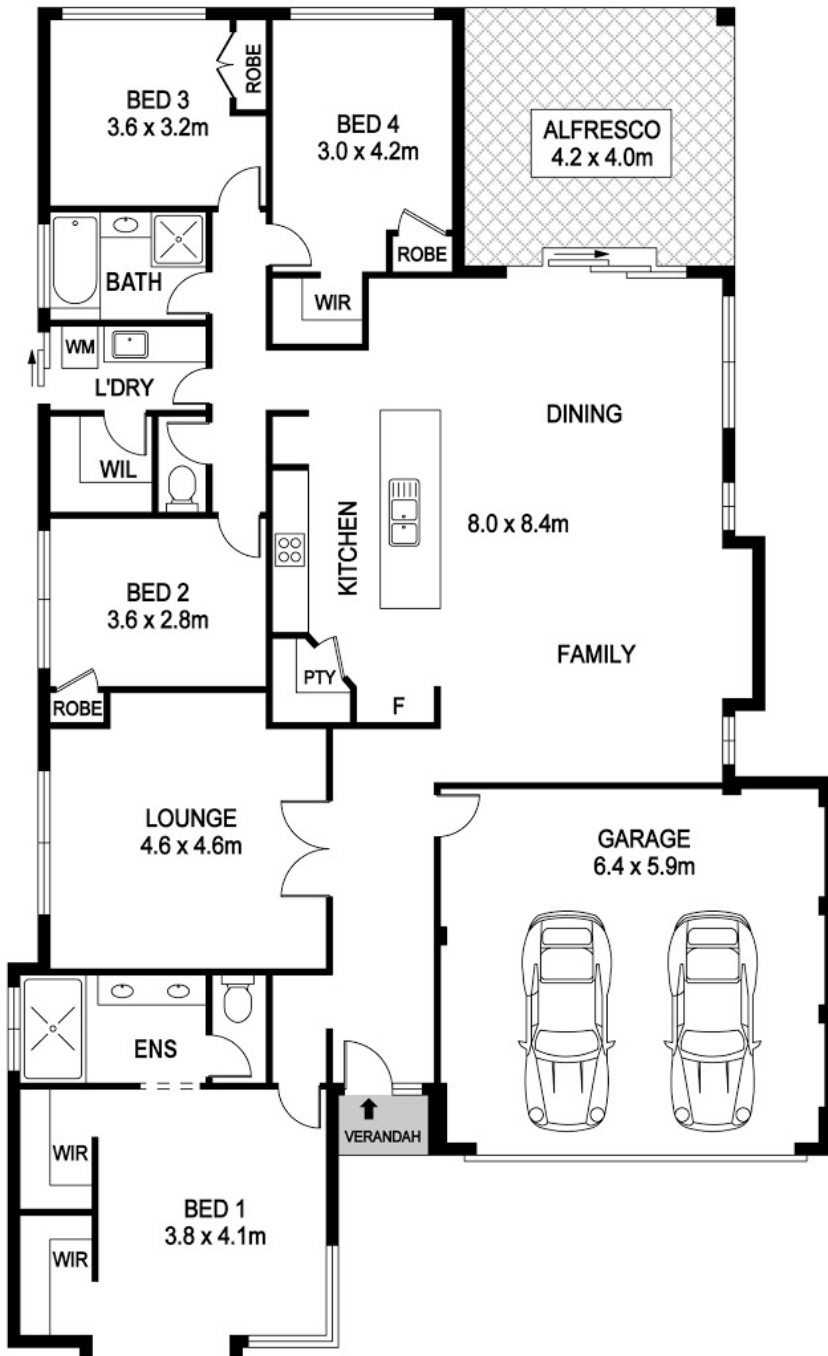
**Lisa Drylie**  
**0433048512**  
lisadrylie@atrealty.com.au  
[www.lisadrylierealestate.com](http://www.lisadrylierealestate.com)

# 5 Mariposa Blvd SECRET HARBOUR



Block Size 543m<sup>2</sup> | 4 Bedrooms | 2 Bathrooms | 2 Car  
Internal 197m<sup>2</sup> | External 61m<sup>2</sup> | Total 258m<sup>2</sup>

Lisa Drylie | 0433 048 512



Disclaimer: Please note this floor plan is for marketing purposes and is to be used as a guide only. All dimensions are estimates only and may not be exact measurements.



REAL ESTATE FLOOR PLANS | [houseguru.com.au](http://houseguru.com.au) | © House Guru Real Estate Photography™

Whilst every attempt has been made to ensure the accuracy of the floor plan contained here, measurements of doors, windows, rooms and any other items are approximate and no responsibility is taken for error, omission or mis-statement. This plan is for illustrative purposes only and should only be used as such by any prospective purchaser. The services systems and appliances shown have not been tested and no guarantee as to their operability or efficiency can be given.

**Lisa Drylie**  
0433048512  
[lisdrylie@atrealty.com.au](mailto:lisdrylie@atrealty.com.au)  
[www.lisadrylierealestate.com](http://www.lisadrylierealestate.com)

