



FOR SALE

WATER VIEWS AS FAR AS YOU CAN SEE!

With stunning water views that sweep across from Cape Woolamai, New Haven to Western Port Bay and beyond, this is the place you would love to call home.

Featuring wide open floor plan with large windows, the living, dining, and lounge rooms are where you can entertain or relax, taking in those magnificent views of the water that just goes on and on. Fitted with heating and air conditioning to keep warm in winter and cool in summer. The generous sized kitchen is fitted with all electric appliances including a dishwasher to cater for all your needs.

This 3 bedroom two story property features 2 bedrooms on the first floor and 1 bedroom on the ground floor. The master bedroom with large windows faces north taking in the stunning views of the bay, also featuring a walk in wardrobe and adjoining bathroom. The bathroom is large and spacious and features shower, vanity, and spa bath, where you can unwind and relax while taking in the beautiful views of the bay. Bedrooms 2 & 3 are of good size and both have lots of storage available with built in robes.

The ground floor features the main entrance to the property, opening the door will lead you into the stairwell to the first floor. Along the hallway you will find bedroom number 3 with built in robe, full size bathroom and laundry with a loads of storage and access to the larger garage workshop.

This two story property has been built high to the rear of the allotment to take advantage of the surrounding views, leaving a larger area of vacant land at the front creating an opportunity for the property to be possibly subdivided* (STCA).

This rare opportunity is ideally positioned within walking distance to the local shops, cafes and beaches in beautiful San Remo, the gateway to Phillip Island.

* Opportunity to subdivide (STCA)

Disclaimer - We have obtained all information in this document from sources we believe to be reliable. However, we cannot guarantee its accuracy. Prospective purchasers are advised to carry out their own investigations.

3 BED | 2 BATH | 2 CAR

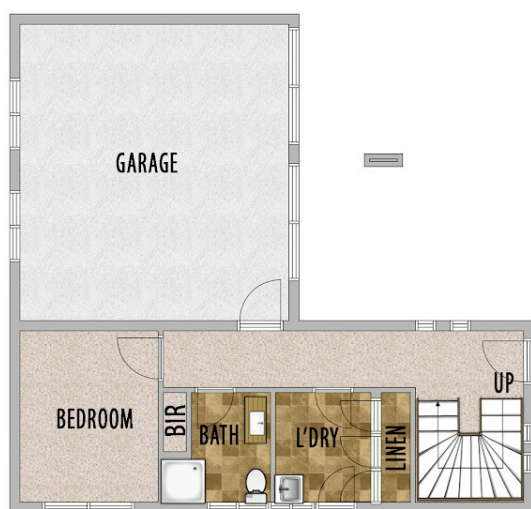
PRICE:
\$899,000

OPEN FOR INSPECTION:
N/A



Ryan Owens
0407747188

ryanowens@atrealty.com.au
www.atrealty.com.au



GROUND FLOOR



FIRST FLOOR



Ryan Owens | @realty
0407 747 188

13 Stuart Street, San Remo

This plan is for illustrative purposes only and should be used as such by any prospective purchasers. Purchasers are advised to carry out their own investigation, as no warranty is given to the plans accuracy.

Disclaimer: Please note this floor plan is for marketing purposes and is to be used as a guide only. All dimensions are estimates only and may not be exact measurements.