

FOR SALE

SUPER SIZED HOME IN DREAM LOCATION

- Ducted reverse cycle air conditioning throughout
- Gorgeous extra wide entrance hallway with shoppers entry
- 31c raised ceilings throughout and quality floor coverings
- Extra large double remote garage with storage space, high clearance and rear roller door
- Queen-sized minor bedrooms with built in robes
- Spacious family bathroom and practical laundry room with additional storage and separate WC
- Stone bench tops in kitchen, laundry, en-suite and family bathroom
- Electric shutters to windows
- Smart wiring throughout and NBN prepared
- Gas storage hot water system
- Fantastic alfresco area overlooking back yard and pool
- Large heated swimming pool with enviro swim filtration system
- Rear access through garage with additional driveway to shed/workshop
- Huge 6m x 6m shed/workshop with 3 phase power, built in work bench and 2.4m high ceiling with roller door access and personal door
- Big kids cubby house, swings, Vuly spring free trampoline & netted chook pen/vegetable garden

4 BED | 2 BATH | 2 CAR

PRICE:
UNDER CONTRACT

OPEN FOR INSPECTION:
N/A



Lisa Drylie
0433048512
lisadrylie@atrealty.com.au
www.lisadrylierealestate.com

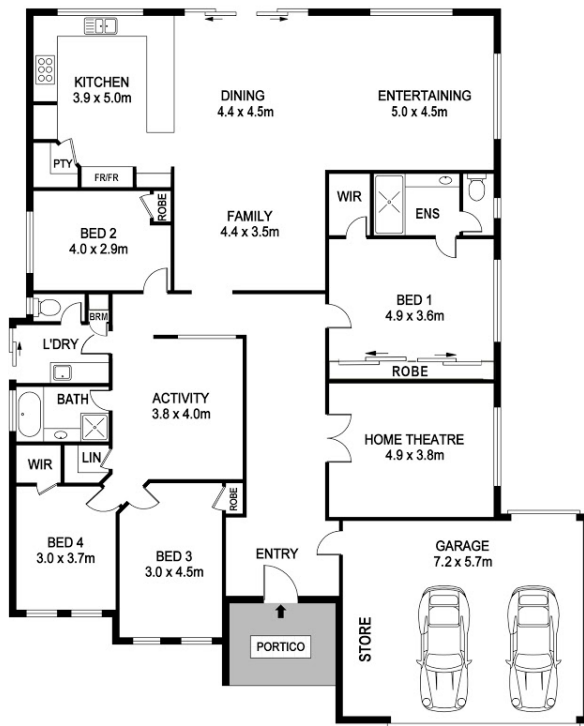
639 Safety Bay Road SAFETY BAY



Block Size 918m² | 4 Bedrooms | 2 Bathrooms | 2 Car

Lisa Drylie | 0433 048 512

Internal 243m² | External 52m² | Total 295m²



REAL ESTATE FLOOR PLANS | houseguru.com.au

Whilst every attempt has been made to ensure the accuracy of the floor plan contained here, measurements of doors, windows, rooms and any other items are approximate and no responsibility is taken for error, omission or mis-statement. This plan is for illustrative purposes only and should only be used as such by any prospective purchaser. The services systems and appliances shown have not been tested and no guarantee as to their operability or efficiency can be given.

Disclaimer: Please note this floor plan is for marketing purposes and is to be used as a guide only. All dimensions are estimates only and may not be exact measurements.

