



**SOLD**

## SPACIOUS FAMILY HOME

THE PERFECT FAMILY HOME WITH 4/ 5 BEDROOMS OR A 3 LIVING AREA WOULD SUIT MOST GROWING FAMILIES. THIS STYLISH HOME INCLUDES OPEN KITCHEN MEALS FAMILY AREA, WITH LARGE KITCHEN, BREAKFAST BAR, DISHWASHER HEAPS OF CUPBOARD SPACE AND SLIDING DOORS OPENING TO A COVERED PATIO AREA IDEAL FOR ENTERTAINING. LOUNGE ROOM OR THEATRE ROOM IS AN IDEAL SPOT FOR PRIVACY, PLUS A PARENTS RETREAT OFF THE MAIN BEDROOM, ALSO PERFECT AS AN OFFICE OR NURSERY. LARGE MAIN BEDROOM WITH WIR AND STUNNING EN-SUITE WITH DEEP SPA BATH TO SOAK YOUR TROUBLES AWAY. THREE MORE BEDROOMS 2 WITH BUILT IN ROBES. GAS DUCTED CENTRAL HEATING KEEPS THE HOME WARM ALL YEAR ROUND. PLUS DUCTED COOLING. EXTRA LARGE DOUBLE GARAGE WITH ACCESS THROUGH TO A PRIVATE SECURE YARD IDEAL FOR CHILDREN AND PETS.

RLA 269823

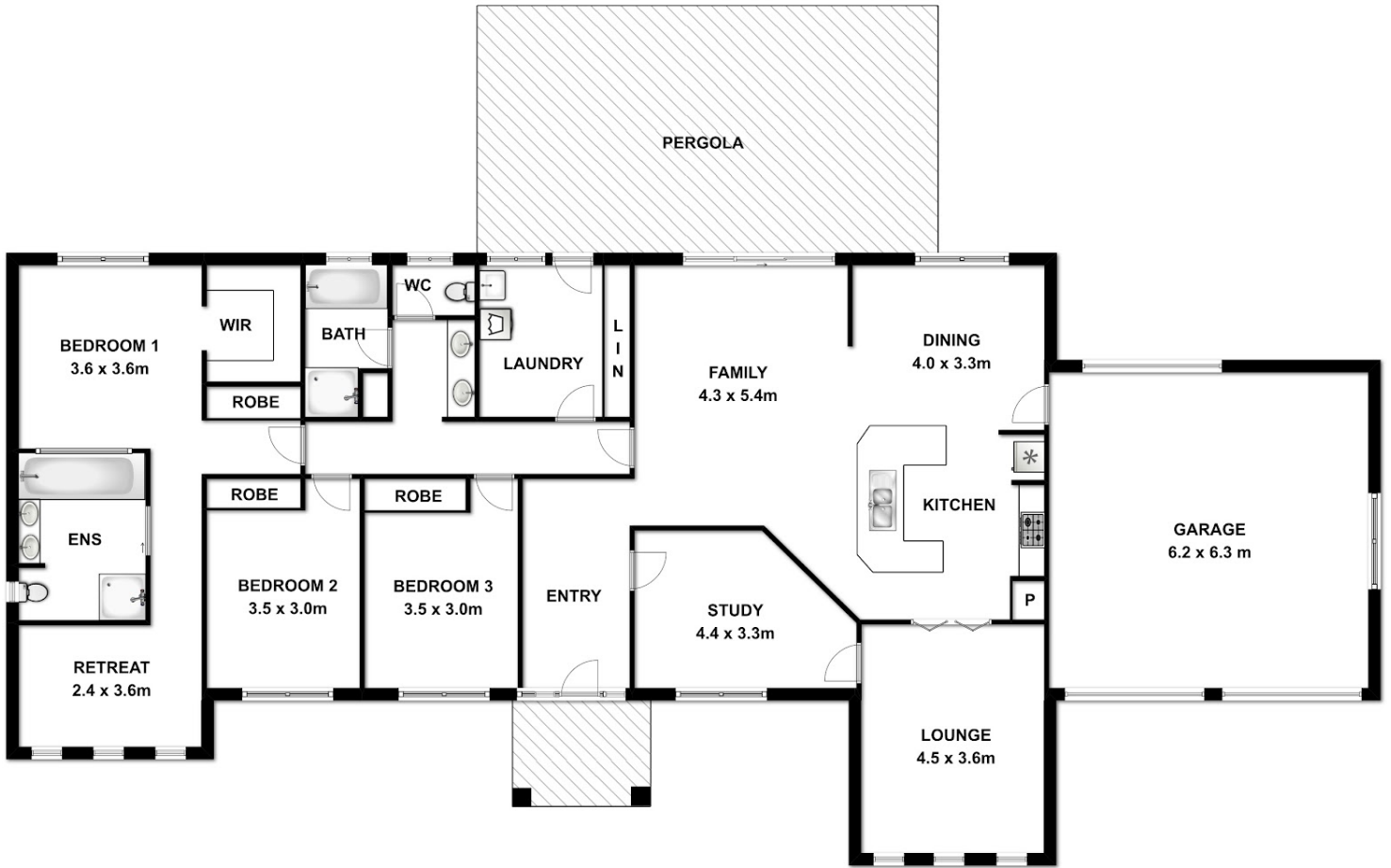
4 BED | 2 BATH | 2 CAR

PRICE:  
\$398,000

OPEN FOR INSPECTION:  
N/A



**Peter Dempsey**  
**0418854393**  
peterdempsey@atrealty.com.au  
[peterdempseyatrealty.com](http://peterdempseyatrealty.com)  
RLA: 269823



This drawing is for illustration purpose only. All measurements are approximate only and information intended to be relied upon should be independently verified.

Disclaimer: Please note this floor plan is for marketing purposes and is to be used as a guide only. All dimensions are estimates only and may not be exact measurements.