



FOR SALE

UNDER CONTRACT

STUNNING EXECUTIVE HOME IN PRESTIGIOUS BENOWA WATERS

Enjoying an enviable location in one of Benowa Waters most renowned streets of prestigious homes, this executive residence embodies quality living at its finest.

Combining classic contemporary living spaces with everyday comfort and elegance, this sophisticated 56 square - 4+ bedroom, 4 bathroom lifestyle home showcases exceptional design and warm timber finishes throughout.

Embracing the outdoors, the family friendly floor plan delivers large multiple living and entertaining areas that interact seamlessly with the alfresco entertaining areas through large banks of stunning timber French doors.

The impressive formal lounge enjoys a cosy open fireplace, while the large quality kitchen boasts gas cooking, stainless steel benchtops, European appliances and an expansive free-standing island bench with solid granite countertop.

Generously proportioned and luxuriously appointed, the master suite enjoys his and hers fully fitted walk-in-robos, a large lavish ensuite bathroom with double vanities, rainfall shower, bath and separate toilet, and a private balcony with pool and garden views.

There are three additional bedrooms upstairs including a second master suite – with dressing room, walk-in-robe, large ensuite and personal balcony.

Built for entertaining this substantial home also includes a multipurpose entertaining room complete with wet bar and servery window which links with the inviting undercover alfresco area, timber deck and sparkling inground pool.

Located in the highly sought after Benowa School catchment, Benowa Waters is a sought after central Gold Coast suburb, central to elite schools, famous beaches shopping centres, Pindara hospital, and the Gold Coast Turf Club.

Inspection is a must to truly appreciate the lifestyle this magnificent home has to offer.

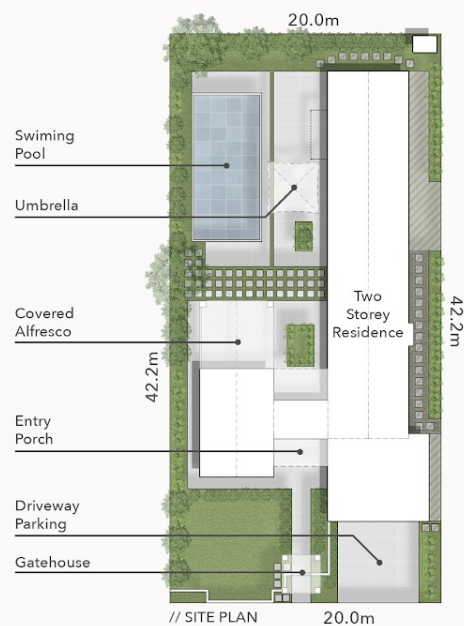
4 BED | 4 BATH | 2 CAR

PRICE:
UNDER CONTRACT

OPEN FOR INSPECTION:
N/A



Scott Euler
0431174010
scott.nicola@atrealty.com.au



CHAROLAIS CRESCENT

25 Charolais Crescent
BENOWA WATERS
Block Size 840m²

FLOOR AREA SIZES
Internal 465m²
Alfresco, Balconies & Porch 51m²
Total 516m² or 56 Squares

PROPERTY DETAILS
- 4 Bed + Study/5th Bed
- 4 Bath + Powder
- 2 Car + Off Street Parking

SCOTT EULER & NICOLA BUCHANAN **@realty**

0407 750 620 | 0431 174 010

puredesign
concepts

PLANS FOR
PURPOSE

The overall presentation style, layout, imagery, fonts, background, colours and terminology are subject to strict copyright of Pure Design Concepts. No ownership is taken for building design. All measurements are approximate & individuals should rely on their own information. Find out more at puredesignconcepts.com.au

Disclaimer: Please note this floor plan is for marketing purposes and is to be used as a guide only. All dimensions are estimates only and may not be exact measurements.

Scott Euler
0431174010
scott.nicola@atrealty.com.au

@realty