



SOLD

ENTERTAINERS MASTERPIECE - LLANARTH LIVING AT ITS FINEST

This beautiful family home is huge on space, sun filled interiors, entertaining and quality. Welcoming with its stylish facade and enjoying a prestige setting, this exceptional home surprises with its expansive unsurpassed kitchen, wet bar, butlers pantry and entertainers family living space.

More features include but not limited to:

- * Outstanding unsurpassed kitchen boasting 40mm stone benches, quality appliances including three ovens, two dishwashers and very workable butlers pantry
- * Massive informal living space which flows free out to the alfresco entertaining area and fire pit
- * Separate wet bar with 40mm stone benches single sink and Zip hot /cold filtered water.
- * New Royal Oak timber flooring
- * Top of the line Lopi wood fireplace
- * Exceptional elevated position with outstanding views overlooking Freeman Park to the rolling hills of Mt Rankin and beyond.
- * Very private, level and established rear yard with shed and fire pit
- * Zoned ducted reverse cycle heating / cooling
- * Large sun drenched formal / media room with views
- * Main bedroom to the front of the home with en suite and walk-in-robe
- * Huge underground water tank
- * Oversized garage with internal access and drive through access
- * Three additional generous sized bedroom all with built-ins
- * North facing aspect and views
- * Back yard is fully irrigated
- * Fabulous expansive informal living space and clever design make this home wonderful to live in
- * Entertaining is breeze as the glass stacker doors open up to let the outside in

This property stands proud and truly presents a big opportunity in today's market, properties of this high standard are hard to come by within this great family neighbourhood.

Your inspection is highly recommended! Call me today on 0417 655 002 to arrange your own private viewing.

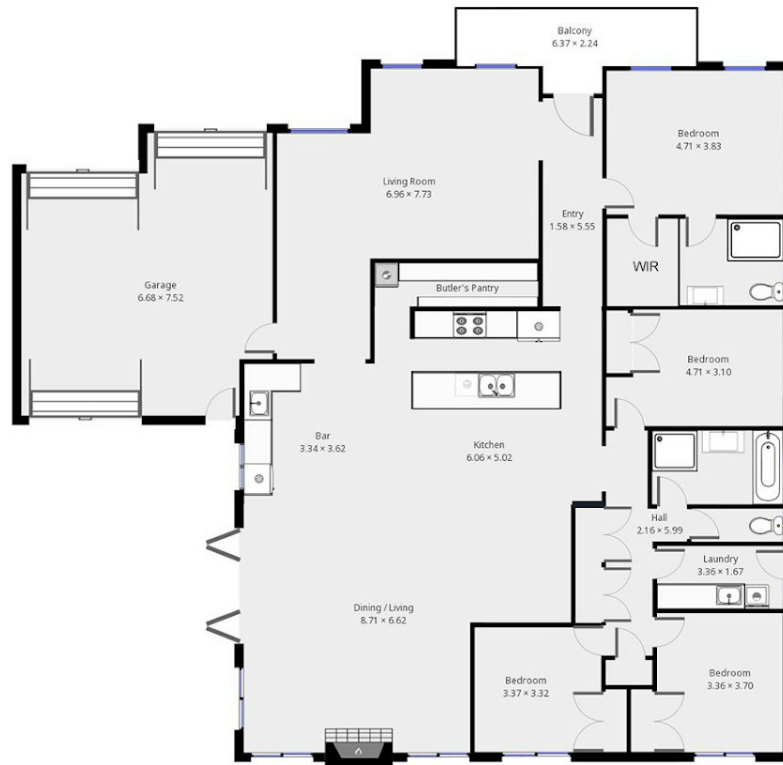
4 BED | 2 BATH | 2 CAR

PRICE:
\$700,000

OPEN FOR INSPECTION:
N/A



Leanne Hurley
0417655002
leanne@atrealty.com.au
www.atrealty.com.au



Disclaimer: Floor plan dimensions are approximate. Indicative only. All information contained herein is gathered from sources we believe to be reliable, however, are to be used as a guide only. We cannot guarantee its accuracy and interested persons should rely on their own enquiries.

Disclaimer: Please note this floor plan is for marketing purposes and is to be used as a guide only. All dimensions are estimates only and may not be exact measurements.