



FOR SALE

YOUR PRIVATE SANCTUARY...

Contemporary, bold and sophisticated, this spectacular Mario Tascone designed two storey residence is carefully constructed over two levels and perfectly designed to maximize privacy. With high ceilings and vast windows capturing leafy treetop views, spiraling light into open plan spaces and perfectly oriented to capture summer breezes, it's a simply glorious family home.

Showcasing the interplay between form and function, strong clean lines define the exterior. Inside, clever design, exceptional attention to detail and inspired functionality enhance a free-flowing floor plan with thoughtful separation of space. Streamlined consistent interiors accentuate sleek lines whilst a chic neutral palette highlights beautiful glossy Tasmanian oak floors.

An oversized timber pivot door opens into a formal entrance hall with living spaces either side. One, at the front of the home, is a fabulous Games Room/TV Room/Study overlooking peaceful front gardens, whilst opposite, sun drenched open plan Family Living and Dining areas blend seamlessly via two sets of perpendicular stacking doors into a tranquil timber lined Alfresco perfect for entertaining family and friends.

The glamorous well-appointed Kitchen features a black granite central island with casual seating, black granite counters alongside striking silver cabinetry, a full suite of stainless steel appliances and huge walk in Pantry.

A gorgeously spacious Bedroom with huge walk in robe and Ensuite, is perfect for guests or as an alternative ground floor Master Bedroom, and there's a second generously sized Bedroom with built in robes. There's an elegant Powder Room and large practical Laundry with plenty of storage with direct access to a drying area.

The upper level is exclusively adult – the vast Master Suite, Reading Nook, huge Dressing Room and luxury Ensuite is a glorious oasis of tranquility and peacefulness, with soaring ceilings and picture windows bringing light and life in...

From sophisticated interiors to spectacular light, bright, airy open plan family spaces perfect for laidback entertaining and relaxed living, to gorgeous Kitchen, luxury Bathrooms, sunny Bedrooms, superb Alfresco and lovely garden surrounds, this stunning contemporary family home epitomizes modern Australian living at its best.

3 BED | 2 BATH | 2 CAR

PRICE:
SOLD

OPEN FOR INSPECTION:
N/A

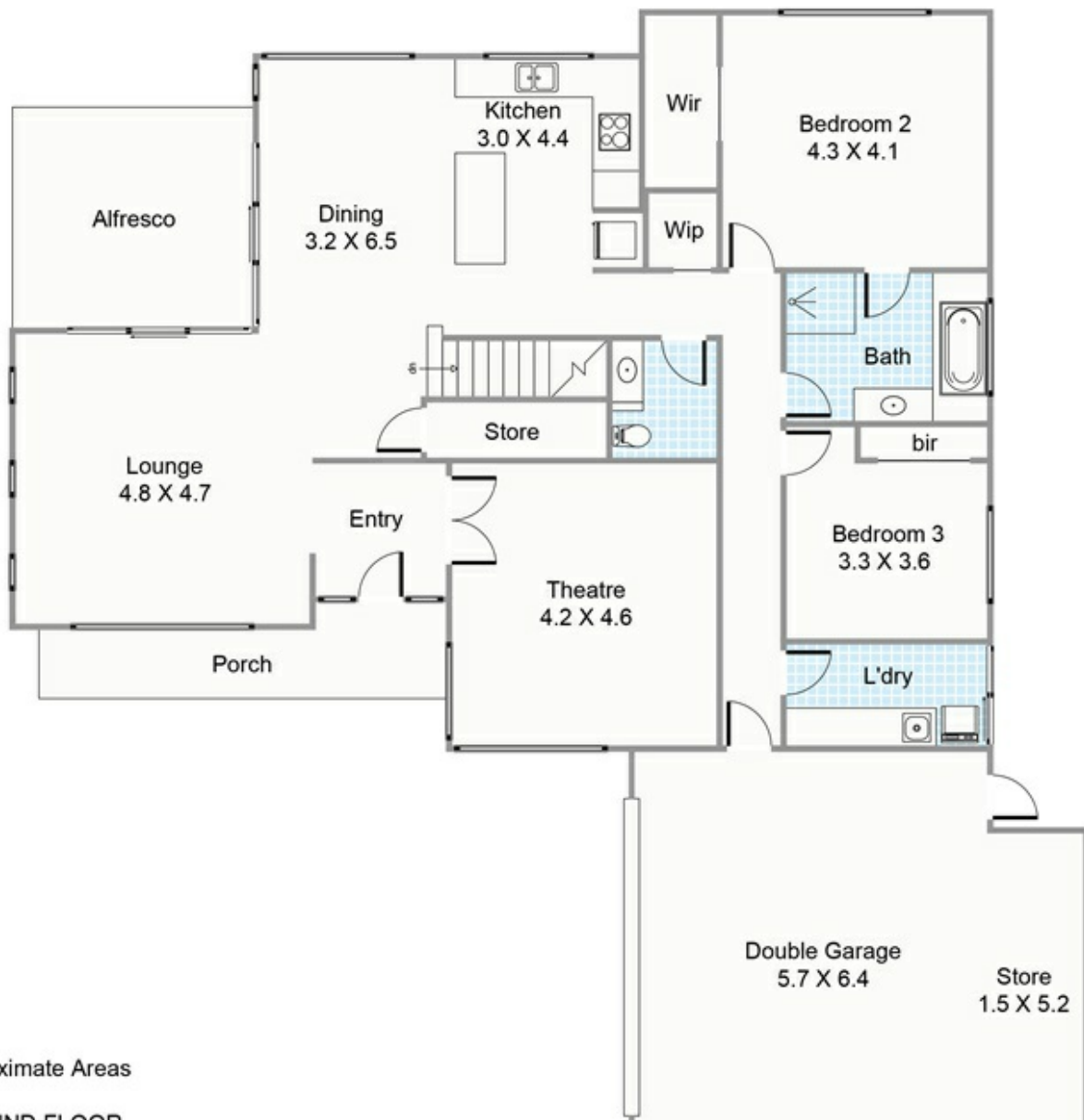
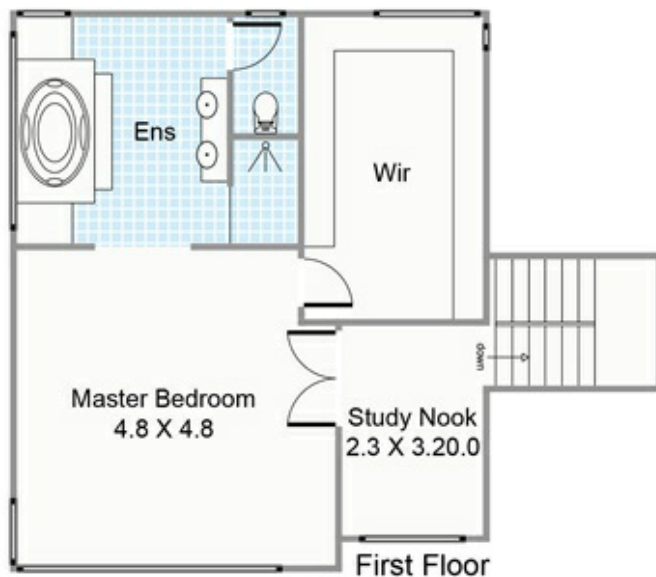


Mark & Jo Derecourt

0499780001

mark.jo@atrealty.com.au

www.atrealty.com.au



Approximate Areas

GROUND FLOOR

Disclaimer: Please note this floor plan is for marketing purposes and is to be used as a guide only. All dimensions are estimates only and may not be exact measurements.

FIRST FLOOR

Residence: 64.10m²

All measurements are estimates
All dimensions are in metres.
Plans are for demonstration only.
www.cribcreative.com.au

Mark & Jo Deregourt
0499780001

mark.jo@atrealty.com.au

www.atrealty.com.au

10A Irwin Street, East Fremantle
@realty