

SOLD

RURAL BEACHSIDE LIVING..

What a great location to retire to or bring up the family. The three bedroom home is set on approximately 5 acres of manicured orchards, open lawn areas and native bush. This location is very special as you can enjoy peaceful rural living and indulge with a morning swim at some of the best beaches in the Nambucca valley. Scotts Head beach is only 7km away, Macksville has a large variety of shops, medical facilities, Hospital and is 9.5km and Nambucca Heads is 23.5km or 20 Min drive.

Other features include:

- Separate air conditioned studio 12x5m ideal for home office, art studio or overflow for family visits.
- Renovated bathroom + extra toilet
- Polished timber floors
- Large 6 bay shed for the van, boat etc.
- Plenty of water with 11,000 Gallon of rainwater storage and freshwater bore.
- Close access to Way Way State forest for bush walks, horse riding and bike riding.

If your looking for the ideal location, I think we have found it, call Craig to inspect.

NOTE: We are a local Nambucca Valley Agency with our head office on the Gold Coast.

We make no representation or warranty as to the accuracy, reliability or completeness of the information relating to the property. Some information has been obtained from third parties and has not been independently verified. Accordingly, no warranty, representation or undertaking, whether express or implied, is made and no responsibility is accepted by us as to the accuracy of any part of this, or any further information supplied by or on behalf our behalf, whether orally or in writing.

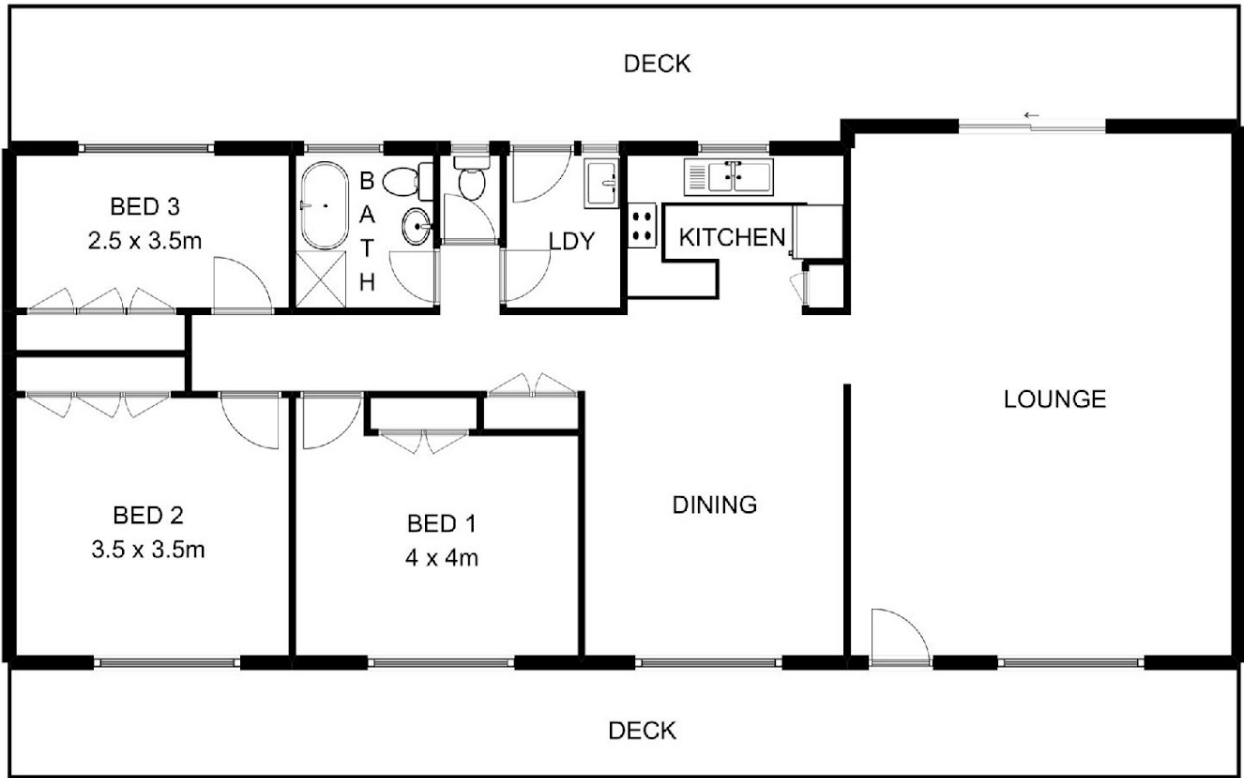
3 BED | 1 BATH | 7 CAR

PRICE:
\$499,000

OPEN FOR INSPECTION:
N/A



Craig Bellamy
0412080287
craig.bellamy@atrealty.com.au
www.atrealty.com.au



488 SCOTTS HEAD ROAD

This floor plan is not to scale. Areas and dimensions are approximate and therefore plan should only be used for illustrative purposes.

Disclaimer: Please note this floor plan is for marketing purposes and is to be used as a guide only. All dimensions are estimates only and may not be exact measurements.