



FOR SALE

PRIME LOCATION! MAXIMUM CONVENIENCE!

Cleverly designed for comfort and perfectly located in the heart of Pakenham. Whether you are looking to purchase your first home, invest or down-size this near New 2-bedroom Unit will tick all the boxes, offering family friendly layout ideal for a variety of buyers. This 2019 built home is offering bright living and dining areas accompanied by an open-plan kitchen fitted with stone bench top and glass splash-back, stainless-steel appliances and dishwasher. Further for your enjoyment and convenience there are master bedroom with en-suite and walk in robe, main bathroom, European laundry, single garage and private yard. Boasting quality fixtures and finishes throughout including: porcelain tiles in bathroom, laminate flooring, block-out blinds and LED downlights throughout. All amazing features complete the profile of perfect home for those looking for a relaxed lifestyle coupled with low maintenance living.

PROPERTY FEATURES

- Master Bedrooms with walk in robes and en-suite
- Kitchen with stone bench top and glass splash back
- Kitchen appliances including gas cooktop, electric oven and dishwasher
- Single secure remote-controlled garage, with internal and rear access
- Laminate flooring
- Air-conditioned living area
- Downlights throughout
- Full landscaping, including private rear courtyard
- Aluminium windows and Block-out blinds throughout

PRIME LOCATION - Walking distance to:

- Pakenham Central Market place, Big W, Woolworths & more. (500m)
- Main Street Pakenham, post office, cafes, medical clinics, child cares. (650m)
- Pakenham Train Station (1000m)
- Library (400m)

Outstanding opportunity for buyers desiring the finest low-maintenance lifestyle

2 BED | 2 BATH | 1 CAR

PRICE:

\$380,000 - \$405,000

OPEN FOR INSPECTION:

N/A



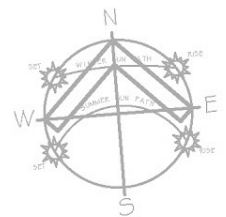
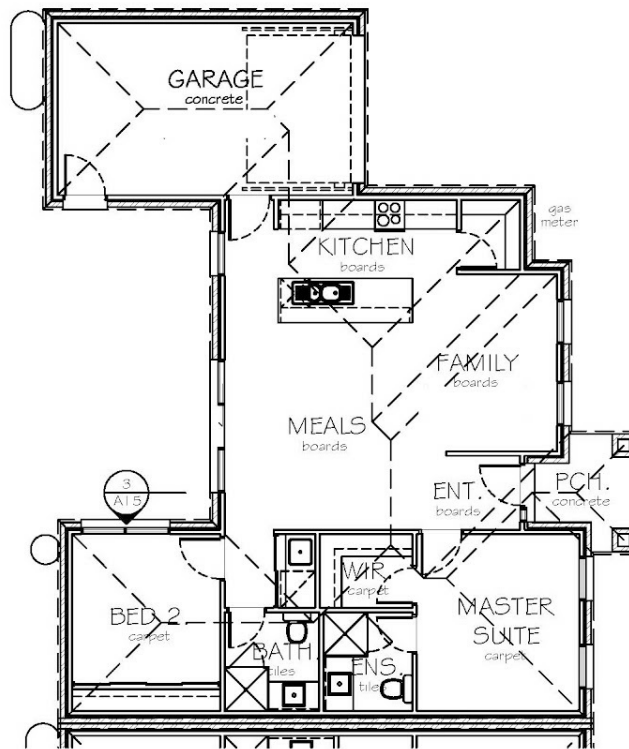
Marko Rankovic

0427771810

markorankovic@atrealty.com.au

www.atrealty.com.au

unit 3



FLOOR PLAN

Disclaimer: Please note this floor plan is for marketing purposes and is to be used as a guide only. All dimensions are estimates only and may not be exact measurements.