



FOR SALE

SOLD!!! ULTIMATE, INSPIRED AND STUNNING LIVING...!

This property must be sold!
Will this be your new home, don't miss out!!
Auction Saturday 5th December 2020 at 12pm
A truly magnificent family home, in a blissful inspiring location!

Our instructions are clear, **THIS PROPERTY MUST BE SOLD!**

Set the scene, we are on the far upper north shore of Sydney in the exclusive 'Illoura Estate' and this amazing commanding property is an absolute showstopper. What an opportunity to secure such a dream!!

Blessed you would be to acquire this home, with the heart of Sydney's CBD only 40 minutes away.

A property to be proud of with an abundance of space looking over the Kuring Gai National Park...you'll feel you're in your own bush oasis.

This inspiring property is generous in its proportions and commanding in its idolised corner position.

The grand master suite is divine, and to be able to enjoy your own private sunsets daily... absolutely breathtaking!!

A family home that is perfect for entertaining and really does have everything you could desire... The North facing rear position and incredible spaces to dine alfresco, mean living and relaxing in private are bliss!

With five generous bedrooms and multiple living zones there is always room. Ducted air-conditioning with intricate controlling, and all the 'mod cons' you could want are included in this gorgeous property.

Also side gate access and drive through garage means the boat, caravan or horse float are accommodated.

5 BED | 2 BATH | 4 CAR

PRICE:
Auction

OPEN FOR INSPECTION:
N/A



Jessica Bruns
0430117048

pearlpropertyagents@atrealty.com.au
www.atrealty.com.au

10 Windybank Way, Berowra

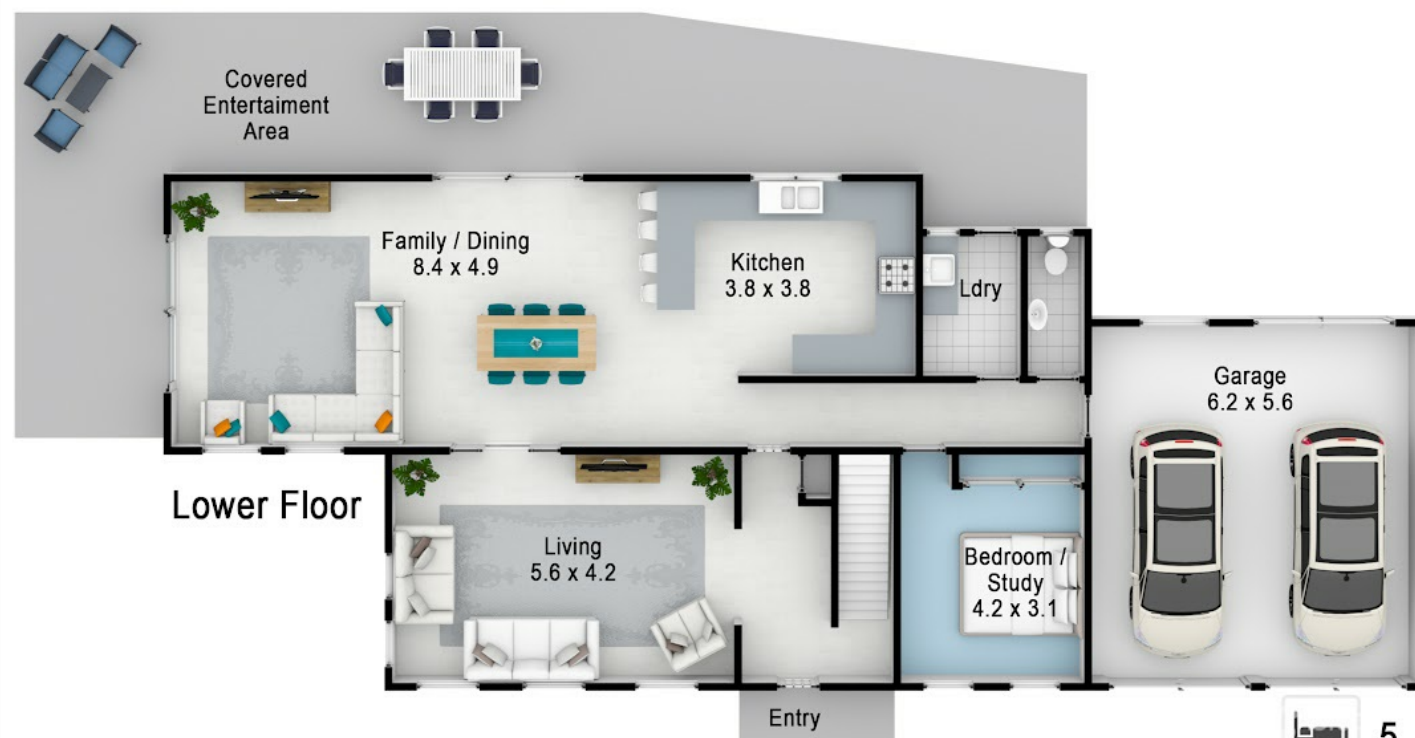
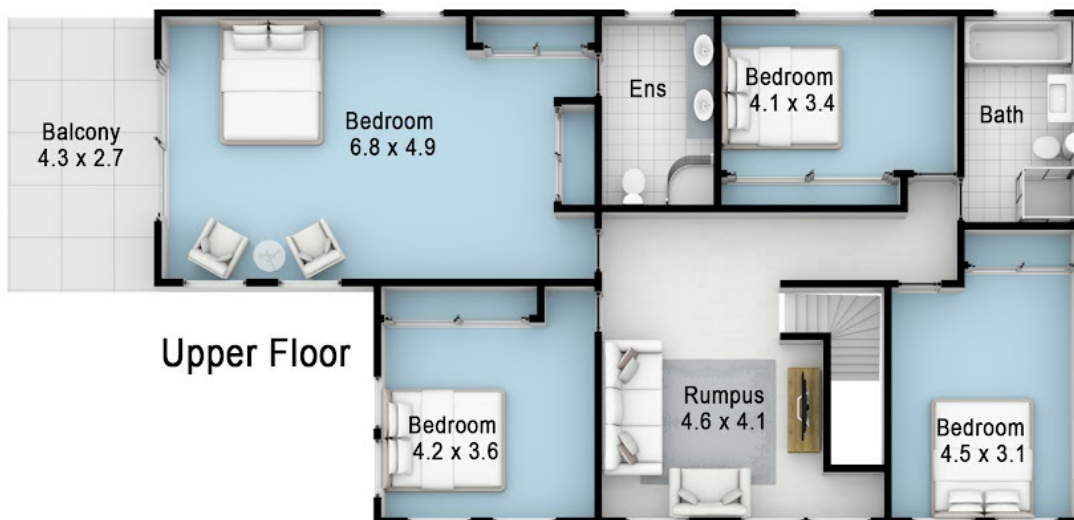
**PEARL PROPERTY
AGENTS** 

Please note:

Floorplan measurements are a guide only.

All dimensions are approximate in their distance and volume.

Rear



Disclaimer: Please note this floor plan is for marketing purposes and is to be used as a guide only. All dimensions are estimates only and may not be exact measurements.

0430 117 048

pearlpropertyagents@atrealty.com.au

Jessica Bruns
0430117048

pearlpropertyagents@atrealty.com.au

www.atrealty.com.au

Front

