

FOR SALE

RAINFOREST RETREAT

Perfectly positioned on a 6,172 SQM block at the top of a hill, just 4 mins outside of Mullumbimby town centre. This house is solid brick and render with a Colorbond roof and has a very large covered outside timber deck for entertaining or relaxing complete with scenic views.

The home has a great layout and is very, very spacious. From the front double door entry you enter to open plan, large living areas. The kitchen is bright and has a big breakfast bar plus good storage and adjoins the dining and casual living space which opens out to the large covered deck.

There is a good sized laundry room and entry into the house from the oversized double garage, plus a powder room.

Next is a big living room which also enjoys access to the outside deck and has the most delightful view of the garden beyond.

There are 3 bedrooms. The spacious master has a wide entry with a good sized ensuite with spa bath and shower and a separate toilet room ... plus there is a walk in closet.

And the view out to the rainforest garden is spectacular!

The other 2 bedrooms have built in closets and there is a family bathroom with shower and bath plus a separate toilet. There is also a good sized study which could also be used as a nursery.

There is plenty of flat level ground around the house for kids and pets to play and a large terraced area out back. The gardens are spectacular. Lovingly planted over 20 years the Palms, Gingers are all flourishing. Bamboo and trees surround the property to offer a lush rainforest style garden still with ample sunlight. The property has town water and on a bio cycle septic system.

There is a bitumen road leading up to the property and there is plenty of off street parking.

This home is large and can be updated easily but is ready to move straight in. Literally 4 mins to town and close to schools and preschool.

Mullumbimby Creek is a fantastic area close to many beaches, close to Byron and Brunswick Heads. It offers rural living away from the crowds of the city in a quiet and private oasis... but just minutes from a great coffee.

Don't miss out. Inspect quickly it has much to offer.

4 BED | 2 BATH | 2 CAR

PRICE:

Contact Agent

OPEN FOR INSPECTION:

N/A



Vicki Cooper

0418231955

vickicooper@atrealty.com.au

www.vickicooper.com

15 Brushbox Dr, Mullumbimby Creek

Vicki Cooper 0418 231 955

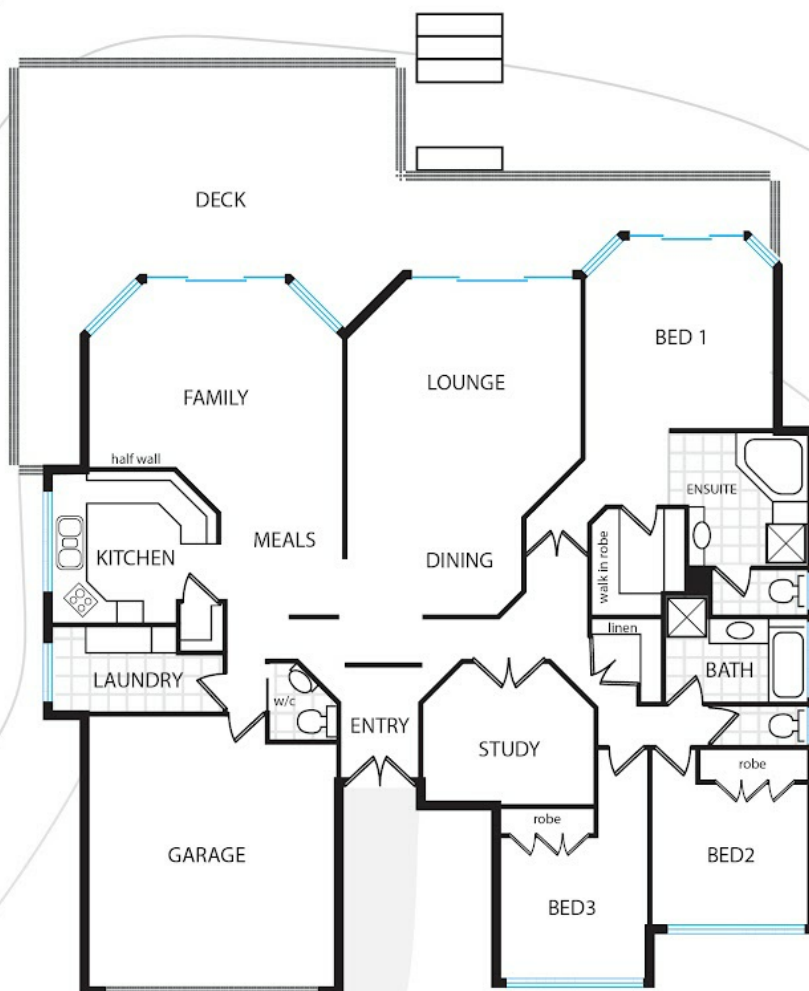
vickicooper@atrealty.com.au



203m2 irrigation
with buffers
surrounding this area

Alternative
disposal area

5800LT



Disclaimer: Please note this floor plan is for marketing purposes and is to be used as a guide only. All dimensions are estimates only and may not be exact measurements.

Please note: All dimensions give are approximate and for illustrative purposes only.

Vicki Cooper
0418231955
vickicooper@atrealty.com.au
www.vickicooper.com

www.odigdesigns.com.au - LOGOS • FLOORPLAN/SITEPLAN REDRAWS • IMAGE ENHANCEMENTS

