



FOR SALE

IDEAL RETIREMENT OPTION, WHERE STYLE AND LUXURY ARE IMPORTANT

Open to the market for the first time is this stunning gem. The ideal retirement option for those who feel style and luxury are still important.

Private and secluded at the northern end of Waterside Gardens, your lifestyle is complete with Bonville Creek glimpses and an abundance of nature easily viewed from your private all-season deck.

Enjoy a quiet and relaxed lifestyle, play a game of Tennis at the on-site Court, and jump in the pool to cool off afterwards. Your weekly fees are a moderate \$130 per week (water included) this gives you full use of everything that Waterside Gardens has to offer. Pensioners will be able to get a rebate.

Entertain guests from your pine deck or shut the blinds and stay inside with your feet up, there are endless options. The new owner would be delighted to experience a generous two bedroom home with freshly laid carpet and ceiling fans throughout, Plantation shutters for added privacy as well as an En-suite and separate guest toilet for visitors.

This home boasts:

- Freshly painted and Australian made and built to last
- Spacious wrap-around pine deck overlooking Bonville Creek
- Private and secluded location at the northern end of the complex
- Modern granite bench-top kitchen with Stainless steel dishwasher and five-burner Gas stovetop
- Two generous bedrooms each with fans and new carpet
- Plantation shutters throughout for added privacy and sense of style
- En-suite and separate guest bathroom for visitors
- Double-car space with added turning bay
- No pets allowed
- \$130 per week site fee, water included
- Pensioners receive generous rebate toward their rent up to \$75 per week
- Use of Park facilities in-ground Pool and Tennis Court
- Bus Stop across the road

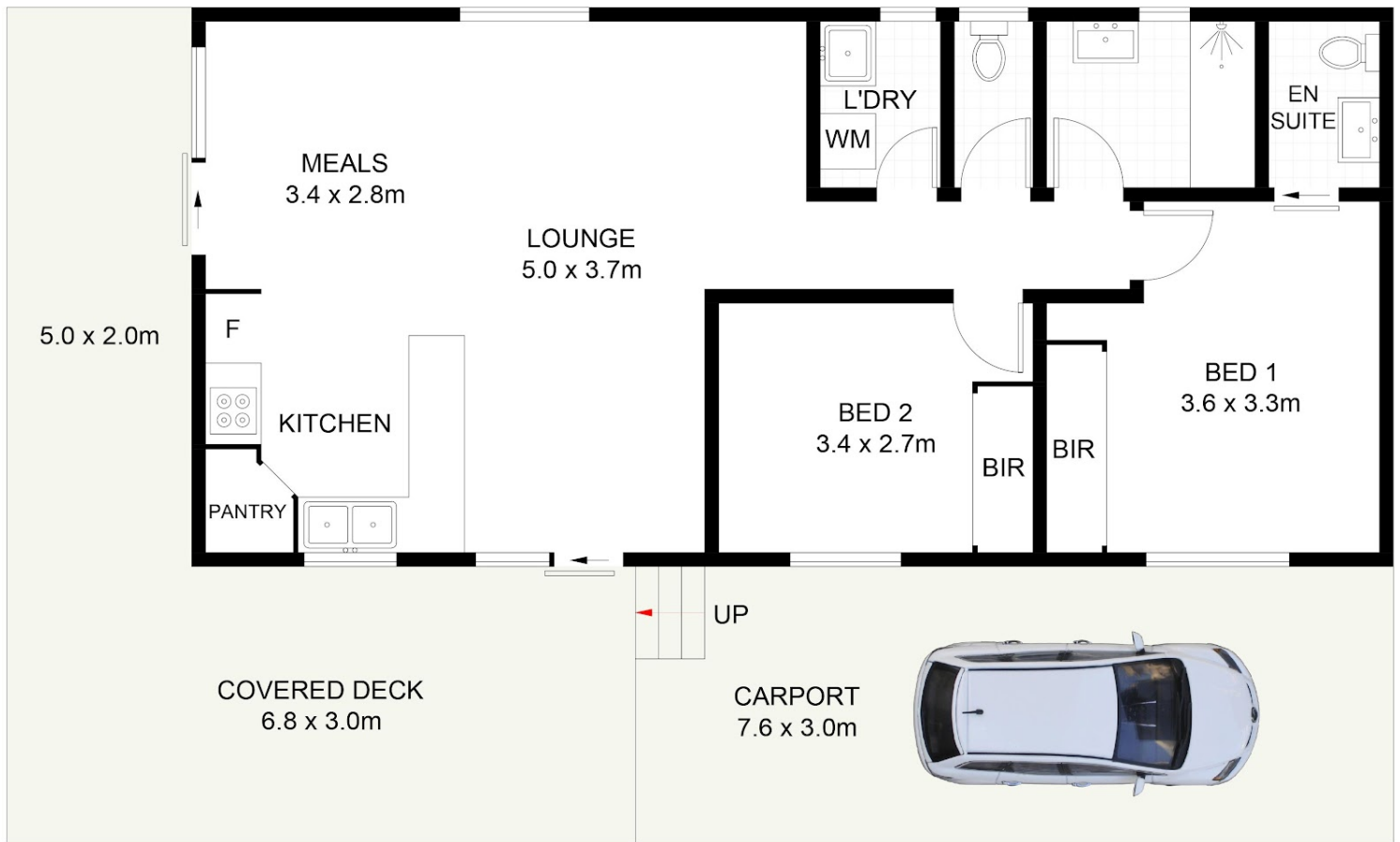
2 BED | 1 BATH | 2 CAR

PRICE:
\$290,000

OPEN FOR INSPECTION:
N/A



Jack Anderson
0447099106
jackanderson@atrealty.com.au
www.atrealty.com.au



17/257 Pine Creek Way, Bonville, NSW 2452

DISCLAIMER: PLANS SHOWN ARE FOR PRESENTATION PURPOSES AND ARE NOT PART OF ANY LEGAL DOCUMENT. ALL MEASUREMENTS AND FIGURES ARE APPROXIMATE.

Disclaimer: Please note this floor plan is for marketing purposes and is to be used as a guide only. All dimensions are estimates only and may not be exact measurements.